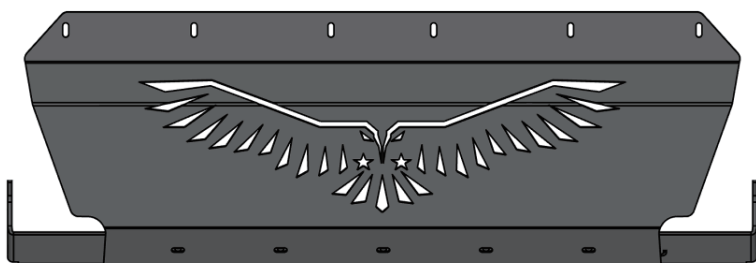


Tools Required

13mm, 10mm Socket

13mm, 10mm Wrench

Ratchet



Notes

Read this instruction carefully before starting installation.

Proper tools will improve the quality of installation and reduce the time required.

If missing parts or any damage found, please take a picture, and contact us. Professional installation would be highly recommended.

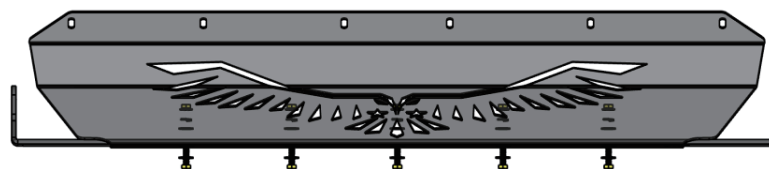
Periodic check to ensure all mounting hardware remains secure and tight.

Fit specified OEDRO front bumper ONLY.

Install the skid plate to bumper before install the bumper onto vehicle.

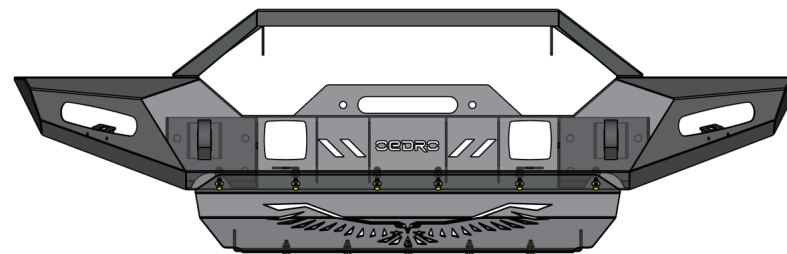
Step 1:

1. After the front bumper assembled, assemble the crossmember to the rear end of the skid plate.
2. Secure the crossmember to skid plate with (5) M6 hex bolts, (10) M6 flat washers, (5) M6 lock washers, (5) M6 hex nuts.



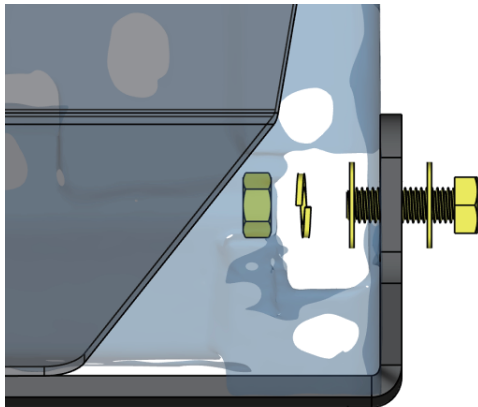
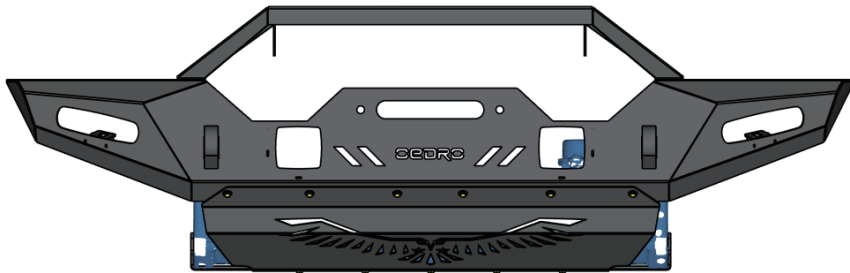
Step 2:

1. With assistance, install the skid plate onto the front bumper.
2. Secure the skid plate to bumper with (6) M6 hex bolts, (12) M6 flat washers, (6) M6 lock washers, (6) M6 hex nuts.



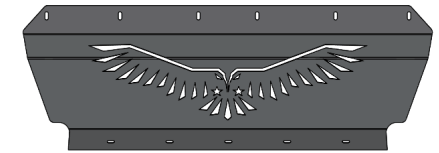
Step 3:

1. With assistance, place the bumper assembly onto frame rail.
2. Secure the bumper to frame rail using front bumper mounting hardware.
3. After the front bumper installed, secure the crossmember onto frame rail with (2) M8 hex bolts, (4) M8 flat washers, (2) M8 lock washers, (2) M8 hex nuts.



Part List:

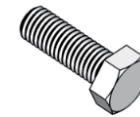
	Qty.	Description
①	×1	Skid Plate
②	×1	Crossmember
③	×11	M6×20 Hexagon Bolt
④	×22	M6×16 Flat Washer
⑤	×11	M6 Lock Washer
⑥	×11	M6 Hexagon Flange Nut
⑦	×2	M8×25 Hexagon Bolt
⑧	×4	M8×20 Flat Washer
⑨	×2	M8 Lock Washer
⑩	×2	M8 Hexagon Nut



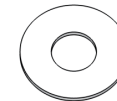
①



②



③



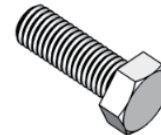
④



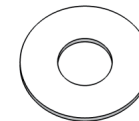
⑤



⑥



⑦



⑧



⑨



⑩