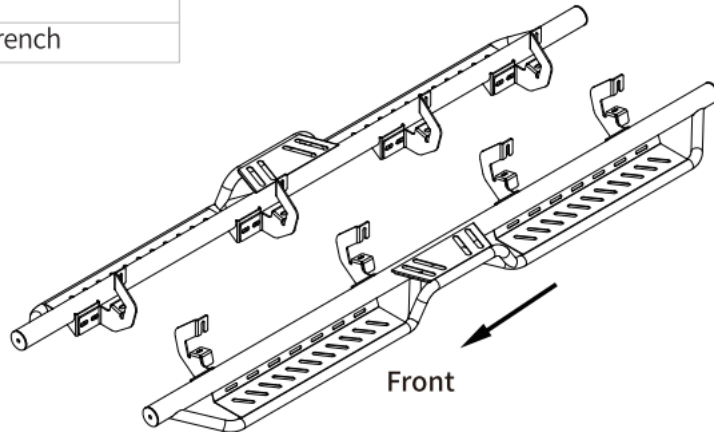


Tools Required

16mm 13mm Socket
16mm Wrench
Katchnet
Torque Wrench



Before Installation:

Read this instruction carefully before starting installation.
Proper tools will improve the quality of installation and reduce the time required.

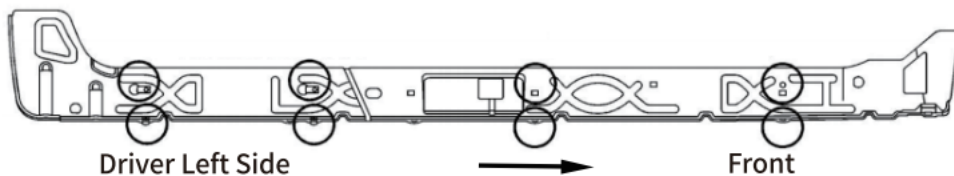
Does NOT compatible with diesel engine vehicle.

If missing parts or any damage found, please take a picture and contact us.

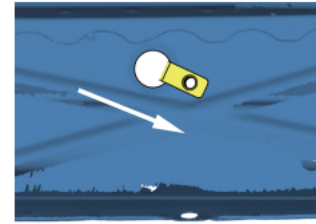
Professional installation would be highly recommended.

Step 1:

1. Locate (4) mounting positions each side.
2. Remove rubber plugs on inner rocker panel.
3. Insert clip nuts onto existing holes in the inner rocker panel and pinch weld.



-1-

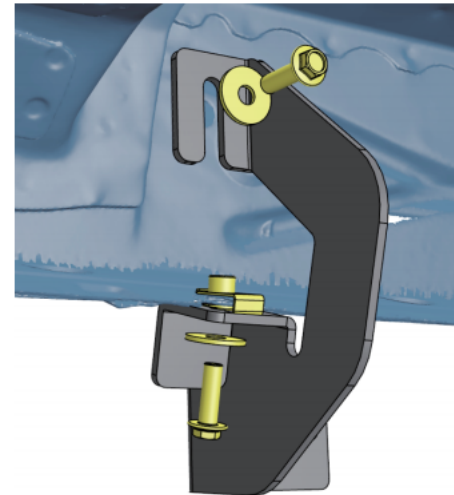


Insert M8 clip nut onto the large hole and over the smaller hole next to it, with threads inside of the inner rocker panel.

Step 2:

1. Attach the bracket to the inner rocker panel and secure with (2) M8 hex bolts, (2) M8 flat washers.
2. Repeat to install remaining brackets, do not fully tighten.

Note: Some vehicles may equipped threaded inserts in rocker panel and weld nuts on pinch weld, use them directly.



Driver Left Side

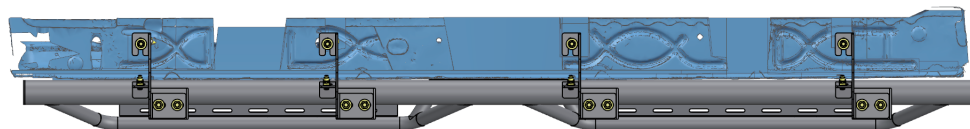
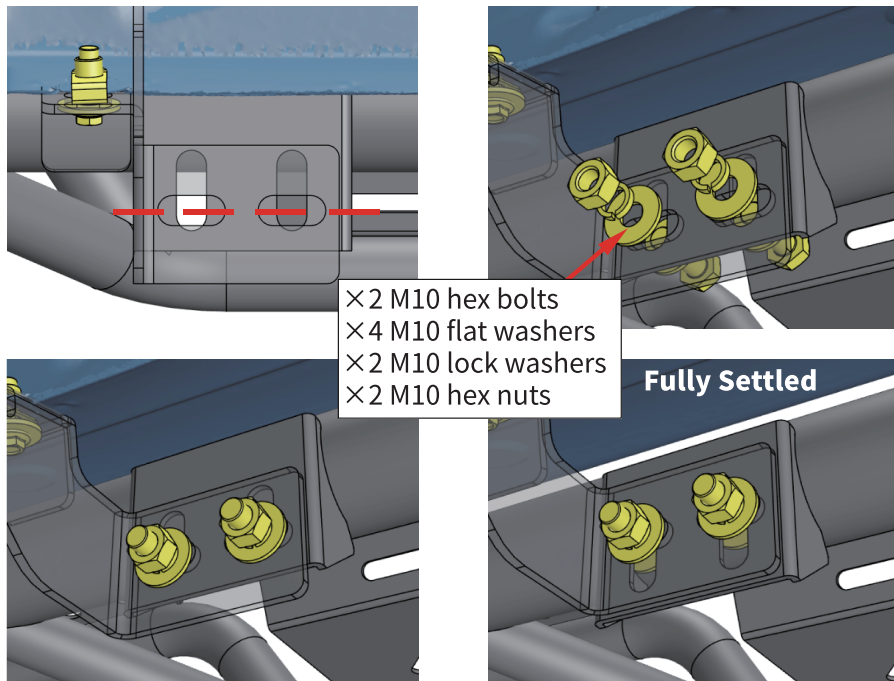
Front

-2-

Step 3:

1. With assistance, lift and attach the step bar to brackets. Align bottom edges of the step bar mounting holes with the bracket mounting holes.
2. Secure the step bar on brackets using (6) M10 hex bolts, (12) M10 flat washers, (6) M10 lock washers, (6) M10 hex nuts.

Note: Insert the M10 bolts from the step bar side. Tighten the M10 hardware after the step bar is fully settled.



Driver Left Side



Front

Step 4:

1. Tighten M8 hex bolts with 15 ft. lbs. torque.
2. Tighten M10 hex bolts and nuts with 31 ft. lbs. torque.
3. After the step bar installed, periodic check to ensure all mounting hardware remains secure and tight.

Part List:

	Qty.	Description
①	×4	Driver Side Bracket
②	×4	Passenger Side Bracket
③	×16	M10×30 Hexagon Bolt
④	×16	M8×25 Hexagon Flange Bolt
⑤	×32	M10×25 Flat Washer
⑥	×16	M8×24 Flat Washer
⑦	×16	M10 Lock Washer
⑧	×16	M10 Hexagon Nut
⑨	×16	M8 Clip Nut

