

Tools Required
13mm Socket
Ratchet
Torque Wrench

Before Installation:

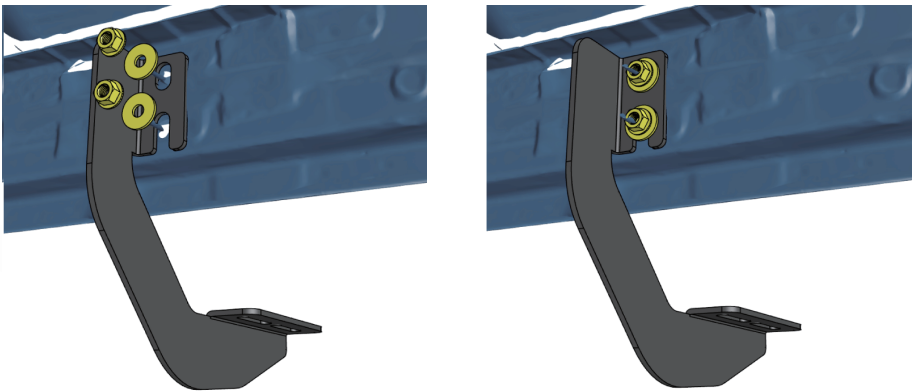
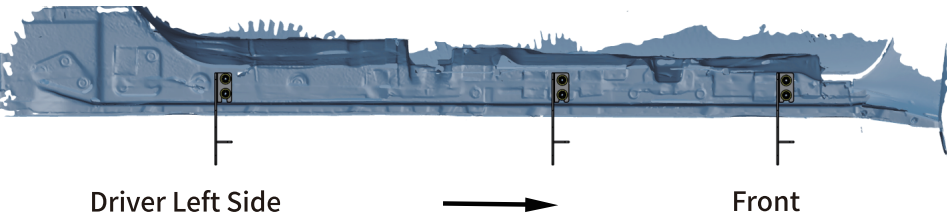
Read this instruction carefully before starting installation.
Proper tools will improve the quality of installation and reduce the time required.
If missing parts or any damage found, please take a picture and contact us.
Professional installation would be highly recommended.
Periodic check to ensure all mounting hardware remains secure and tight.

Step 1:

- 1. Locate (3) mounting positions each side.
- 2. Remove the paint buildup on the factory threaded studs.
- 3. Clean the sealant and dirt around mounting positions.

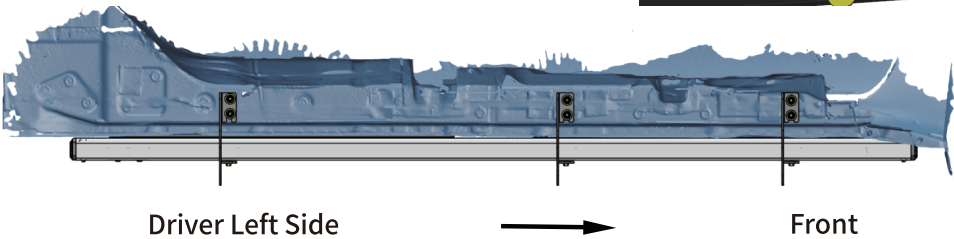
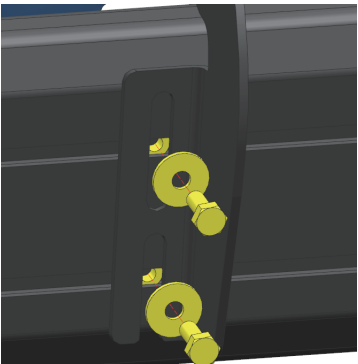
Step 2:

- 1. Attach bracket to factory studs on inner rocker panel.
- 2. Secure the bracket to inner rocker panel using (2) M8 flat washers, (2) M8 hex nuts.
- 3. Repeat to install remaining brackets. Torque M8 hex nuts to 15 ft lbs.



Step 3:

- 1. Remove (6) M8 hex bolts and (6) M8 flat washers underneath the step bar.
- 2. Slide mounting track to proper positions.
- 3. With assistance, take the step bar to brackets. Secure the step bar on brackets with (6) M8 hex bolts and (6) M8 flat washers.
- 4. Repeat to install the other side step bar.



Part List:

	Qty.	Description
①	× 6	Mounting Bracket
②	× 12	M8 Flat Washer
③	× 12	M8 Hexagon Nut
Pre-Installed on Step Bar		
④	× 12	M8 Flat Washer
⑤	× 12	M8 Hexagon Bolt

