

Tools Required

19 mm Socket
19 mm Wrench
Ratchet
Torque Wrench



Before Installation:

Read this instruction carefully before starting installation.

Proper tools will improve the quality of installation and reduce the time required.

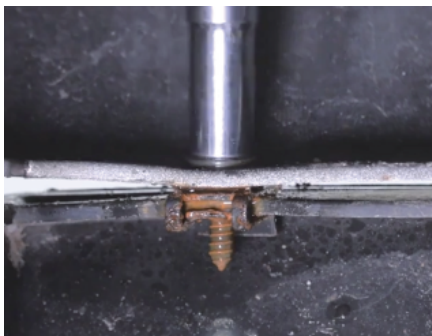
If missing parts or any damage found, please take a picture and contact us.

Professional installation would be highly recommended.

Bull bar may interfere with front sensors.

Step 1:

1. Carefully remove the plastic splash guard attached to the bottom of the front bumper.
2. Depending on model year and trim level, the splash guard will be secured by plastic fasteners, rivets or hex bolts.



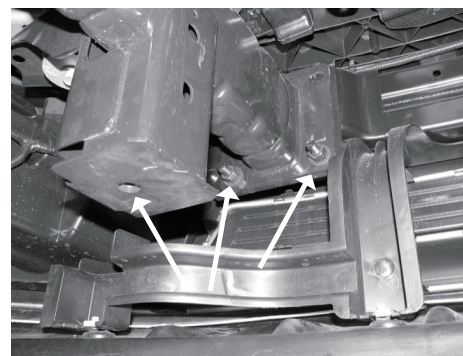
Step 2:

For models without factory tow hooks:

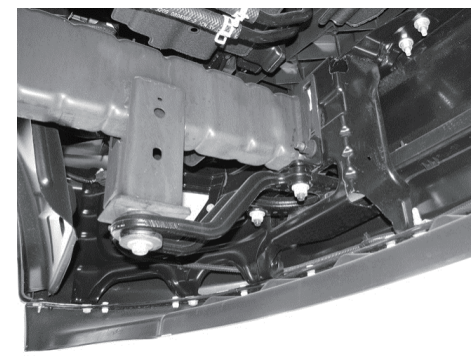
1. Select one of the upper frame brackets and the driver side lower frame mounting bracket. Bolt the two together with (2) M12 flat washers, (2) M12 lock washers and (2) M12 hex nuts.
2. Remove the hex nuts on the two lower factory bumper bolts. Insert the assembled mounting bracket up from behind the bumper and align the holes in the mounting bracket with the bumper bolts. Attach the bracket to the bumper bolts using the factory hex nuts and tighten this hardware only.

For models with factory tow hooks:

1. Remove the (2) hex nuts holding the front of the tow hook to the back of the bumper.
2. Select the driver side lower mounting bracket and hang it from the tow hook mounting studs. Attach the lower mounting bracket to the two studs using the factory hex nuts.



Without Factory Tow Hooks



With Factory Tow Hooks

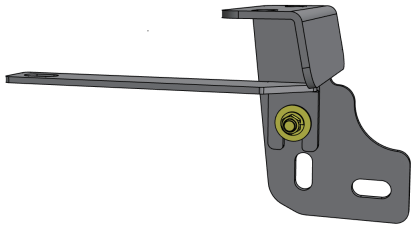
Step 3:

For models without factory tow hooks:

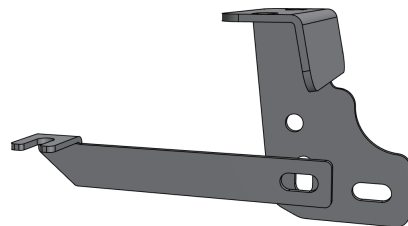
1. Install the driver side support bracket with the slotted side toward the front of the truck. Bolt the bracket to the inside of the lower mount using the round hole above the two slotted holes in the bracket.
Use the included (1) M10×35mm hex bolt, (2) M10 flat washers, (1) M10 lock washer and (1) M10 hex Nut,
2. Attach the rear of the support bracket to the frame with (1) M12 fine thread hex bolt, (1) M12 flat washer and (1) M12 lock washer.

For models with factory tow hooks:

1. Install the driver side support bracket with the round hole toward the front of the truck and the slotted hole to the rear. Bolt the slotted end of the support bracket to the rear mounting bolt for the tow hook.
2. Loosen the factory hex bolt and insert the slotted end of the support bracket under the head of the factory bolt.



Without Factory Tow Hooks



With Factory Tow Hooks

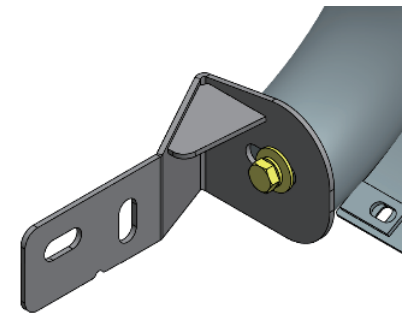
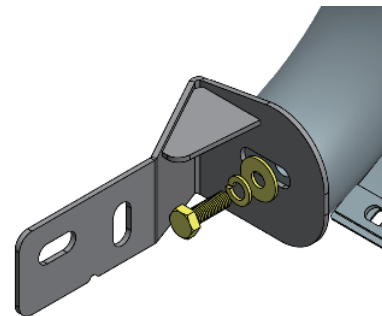
Step 4:

1. Repeat steps 2-3 on the passenger side.
2. Hold the splash guard and attach it onto bumper, line up mounting points.
3. Mark the locations of the mounting brackets on the splash guard.
4. Trim the splash guard using utility knife.
8. Tighten all mounting hardware before re-install splash guard.



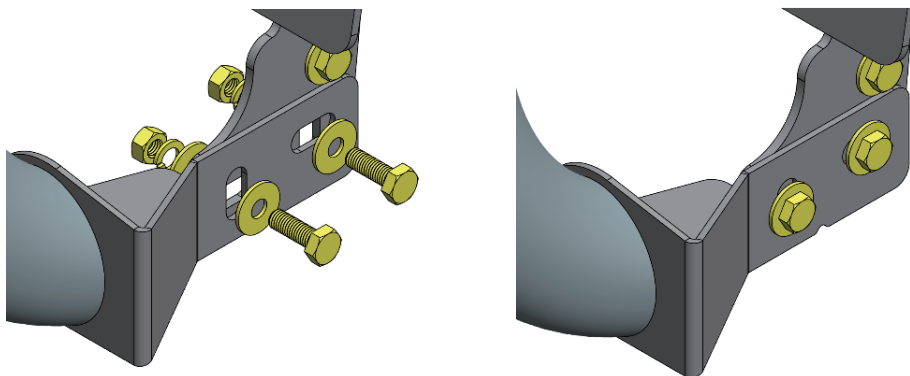
Step 5:

1. Select bull bar mounting brackets to the bull bar and secure with (2) M12 hex bolts, (2) M12 flat washers, (2) M12 lock washers.
2. Driver side is shown, repeat on the passenger side.

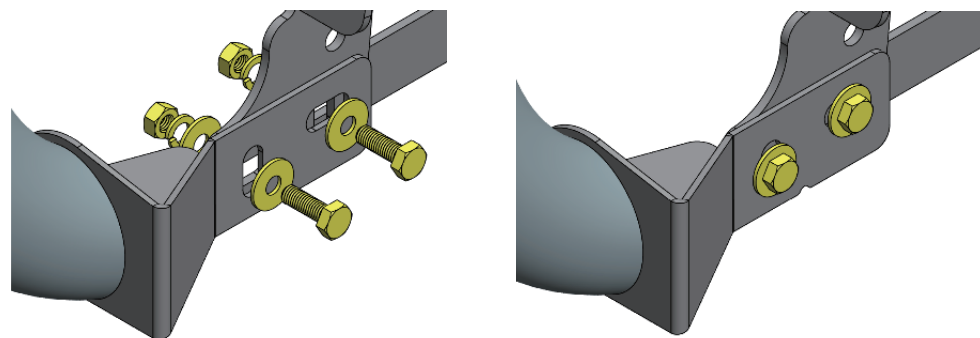


Step 6:

1. With assistance, lift and attach mounting tabs on bull bar with the outside of (2) previously installed bull bar brackets.
2. Secure bull bar to brackets with (4) M12 hex bolts, (8) M12 flat washers, (4) M12 lock washers, (4) M12 hex nuts.
3. Level and adjust bull bar properly and tighten M12 hardware to 50 ft.lbs.
4. After the bull bar installed, periodic check to ensure all mounting hardware remains secure and tight.



Without Factory Tow Hooks



With Factory Tow Hooks

	Qty.	Description			
			⑦	× 1	Driver Side Bull Bar Bracket
①	× 1	Driver Side Upper Bracket	⑧	× 1	Passenger Side Bull Bar Bracket
②	× 1	Passenger Side Upper Bracket	⑨	× 8	M12×30 Hexagon Bolt
③	× 1	Driver Side Lower Bracket	⑩	× 2	M12×35 Fine Thread Hex Bolt
④	× 1	Passenger Side Lower Bracket	⑪	× 20	M12×30 Flat Washer
⑤	× 1	Driver Side Support Bracket	⑫	× 14	M12 Lock Washer
⑥	× 1	Passenger Side Support Bracket	⑬	× 10	M12 Hexagon Nut

