

Tools Required

13mm,16mm Socket
16mm Wrench
Ratchet
Torque Wrench

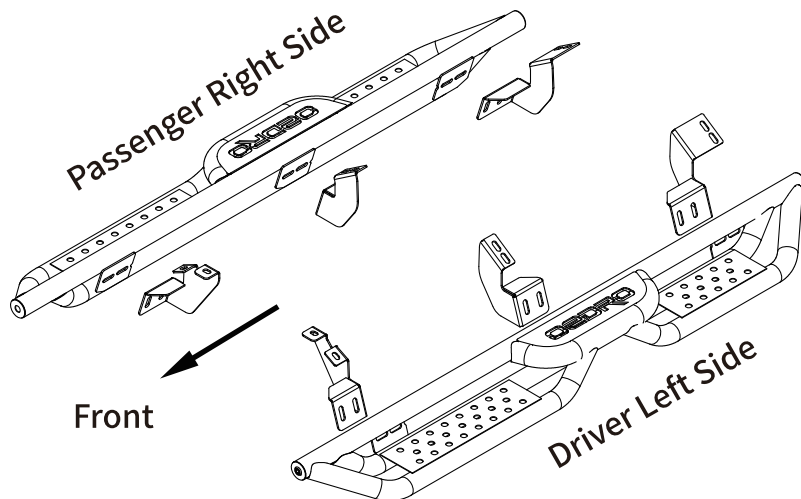
Before Installation:

Read this instruction carefully before starting installation.

Proper tools will improve the quality of installation and reduce the time required.

If missing parts or any damage found, please take a picture and contact us.

Professional installation would be highly recommended.

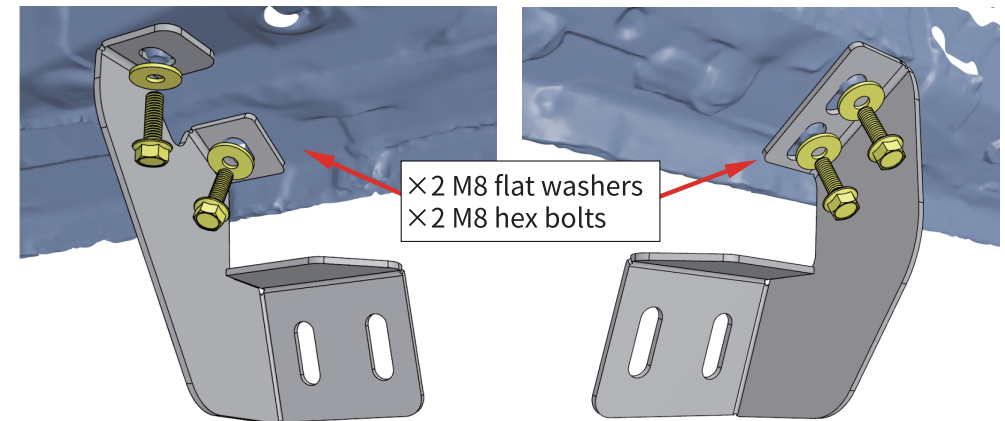


Step 1:

1. Locate (3) mounting positions each side.
2. Remove factory plugs or hex bolts from mounting positions.
3. Clean the sealant and dirt around mounting positions.

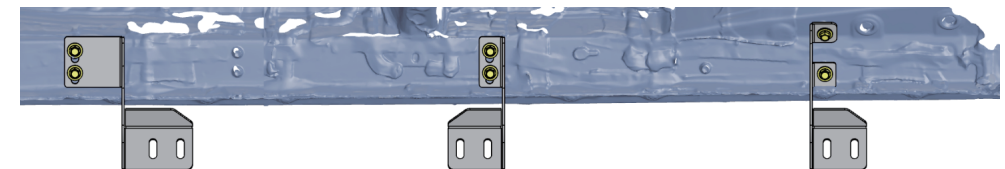
Step 2:

1. Attach bracket to the rocker panel and secure with (2) M8 hex bolts, (2) M8 flat washers.
2. Repeat to install all brackets. Do not fully tighten.



Front Driver Side

Center Driver Side

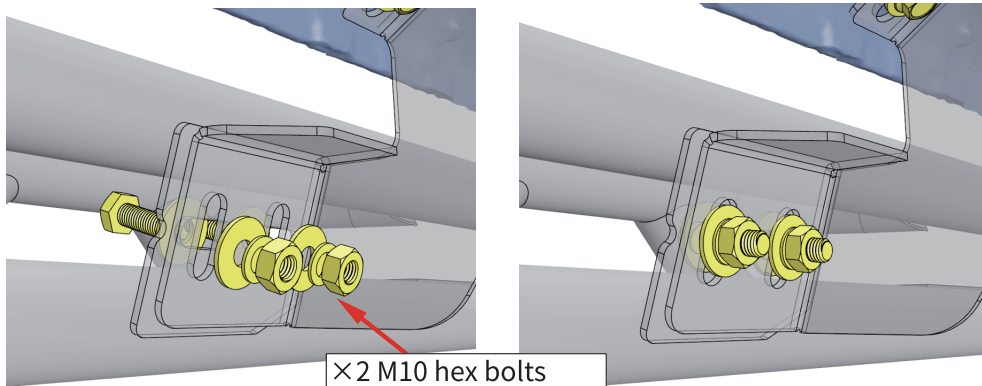


Driver Left Side

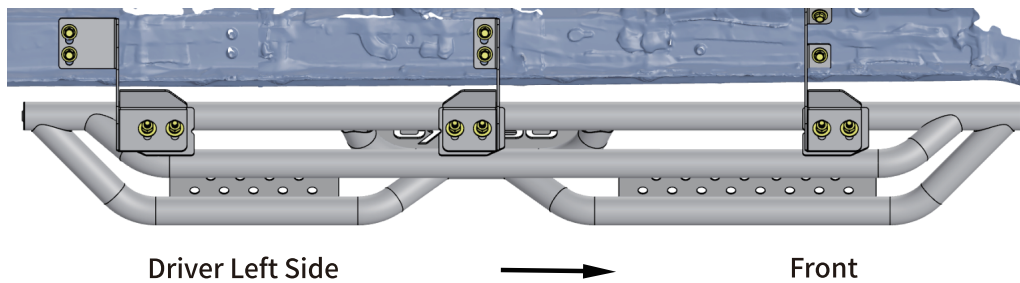
Front

Step 3:

1. With assistance, lift and attach the step bar to brackets. Secure the step bar on brackets using (6) M10 hex bolts, (12) M10 flat washers, (6) M10 lock washers, (6) M10 hex nuts.
2. Repeat to install the other side step bar.



×2 M10 hex bolts
 ×4 M10 flat washers
 ×2 M10 lock washers
 ×2 M10 hex nuts



Step 4:

1. Tighten M8 hex bolts with 15 ft. lbs. torque.
2. Tighten M10 hex bolts and nuts with 30 ft. lbs. torque.
3. After the step bar installed, periodic check to ensure all mounting hardware remains secure and tight.

Part List:

	Qty.	Description		Qty.	Description
①	×1	Front Driver Side Bracket	⑦	×12	M10×30 Hexagon Bolt
②	×1	Center Driver Side Bracket	⑧	×12	M8×25 Hexagon Flange Bolt
③	×1	Rear Driver Side Bracket	⑨	×24	M10×25 Flat Washer
④	×1	Front Passenger Side Bracket	⑩	×12	M8×24 Flat Washer
⑤	×1	Center Passenger Side Bracket	⑪	×12	M10 Lock Washer
⑥	×1	Rear Passenger Side Bracket	⑫	×12	M10 Hexagon Nut

