

CARE AND USE INSTRUCTIONS

Before Installation:

Read this instruction carefully before starting installation.

Proper tools will improve the quality of installation and reduce the time required.

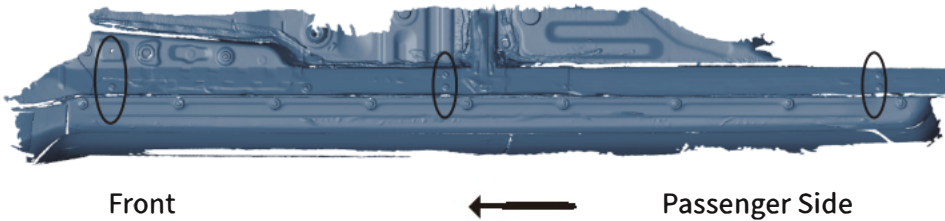
If missing parts or any damage found, please take a picture and contact us.

Professional installation would be highly recommended.

Periodic check to ensure all mounting hardware remains secure and tight.

Step 1:

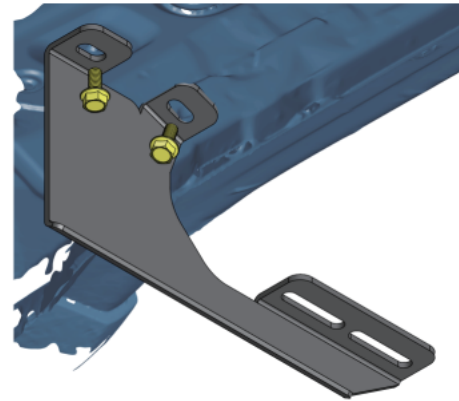
1. Locate (3) mounting positions each side.
2. Remove the rubber plugs or hex bolts on the inner rocker panel.



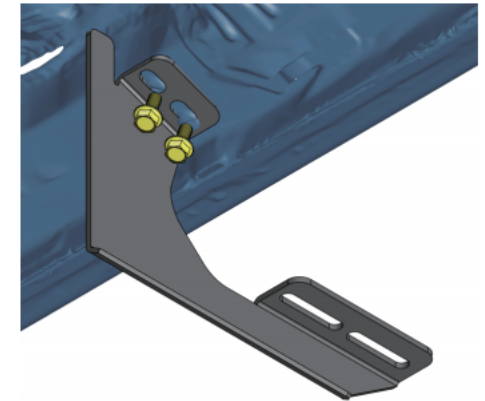
CARE AND USE INSTRUCTIONS

Step 2:

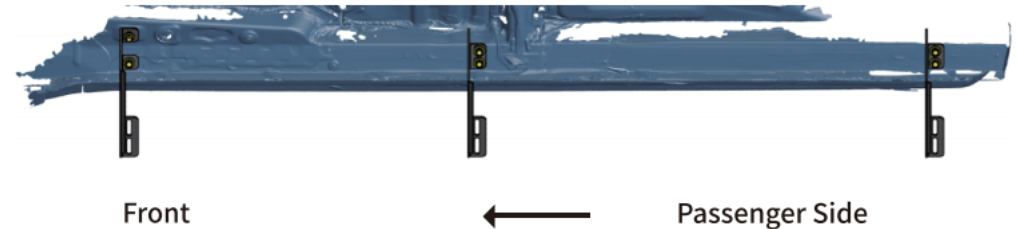
1. Attach the bracket to the inner rocker panel and secure with (2) M8 hex bolts.
2. Repeat to install remaining brackets, do not fully tighten.



Front Bracket



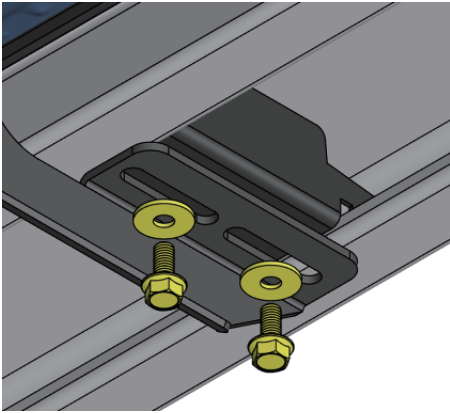
Center/Rear Bracket



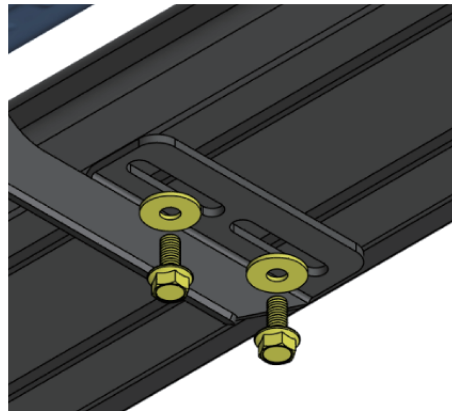
CARE AND USE INSTRUCTIONS

Step 3:

1. Remove (6) M8 hex bolts and (6) M8 flat washers from the step bar.
2. Slide mounting tracks to proper positions.
3. With assistance, lift and attach the step bar to brackets.
Secure the step bar on brackets with (6) M8 hex bolts and (6) M8 flat washers.
4. Repeat to install the other side step bar, do not fully tighten.



Stainless Steel Step Bar



Aluminum Alloy Step Bar



Front



Passenger Side

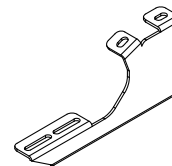
CARE AND USE INSTRUCTIONS

Step 4:

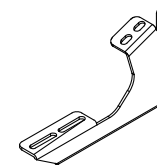
1. Tighten M8 hex bolts on vehicle with 15 ft-lbs. torque.
2. Adjust the step bar to level and tighten M8 hex bolts with 15 ft-lbs. torque.
3. After the step bar installed, periodic check to ensure all mounting hardware remains secure and tight.

Part List:

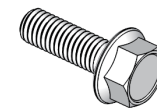
	Qty.	Description
①	×2	Front Bracket
②	×4	Center/Rear Bracket
③	×12	M8 Hexagon Flange Bolt
Pre-Installed on Step Bar		
④	×12	M8 Hexagon Flange Bolt
⑤	×12	M8 Flat Washer



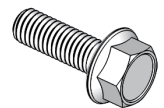
①



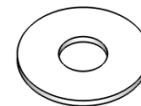
②



③



④



⑤