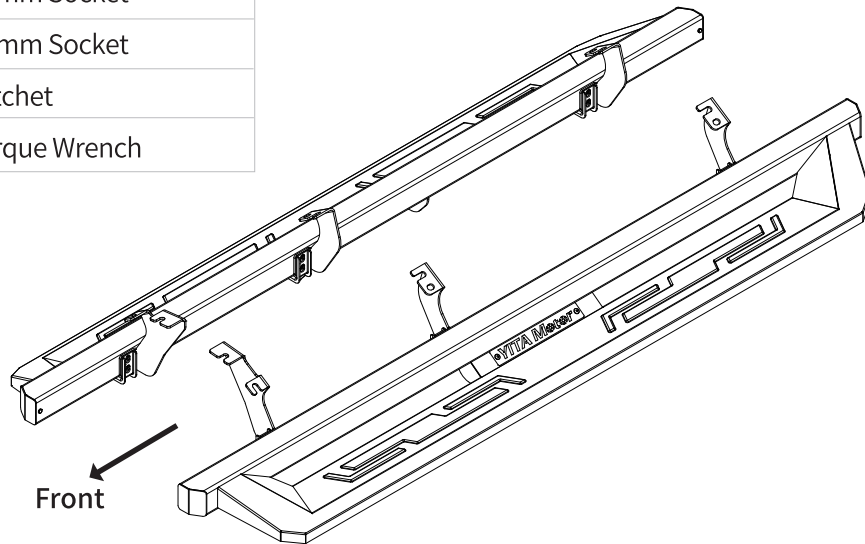


Tools Required

12 mm Socket
13 mm Socket
Ratchet
Torque Wrench



Notes

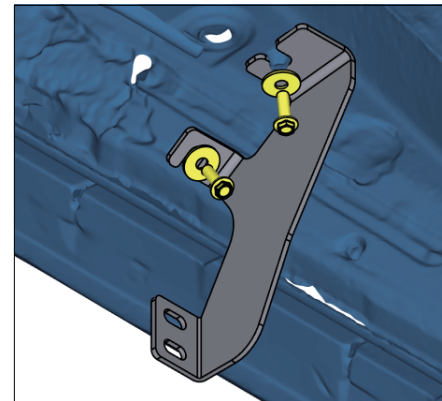
Read this instruction carefully before starting installation.
Proper tools will improve the quality of installation and reduce the time required.
If missing parts or any damage found, please take a picture and contact us.
Professional installation would be highly recommended.
Periodic check to ensure all mounting hardware remains secure and tight.

Step 1:

1. Locate the factory bolts along the inner rocker panel. Installation will use the 1st, 2nd and 4th mounting positions.
2. Remove factory bolts from mounting positions.
3. Clean the sealant and dirt around mounting positions.

Step 2:

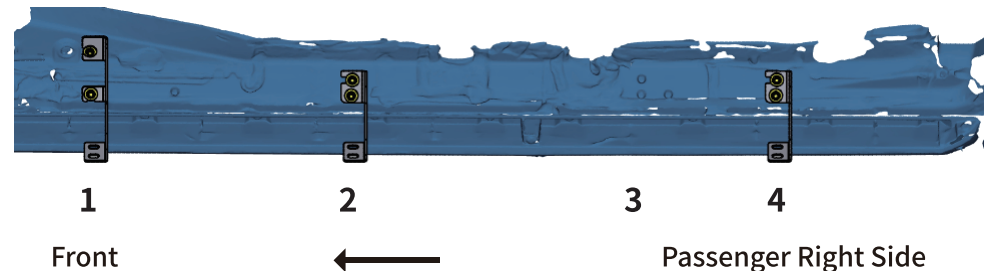
1. Attach the bracket to the thread inserts on inner rocker panel.
2. Secure the bracket to inner rocker panel with (2) M8×25 hex bolts, (2) M8 flat washers.
3. Repeat to install all mounting brackets.



Passenger Side Front

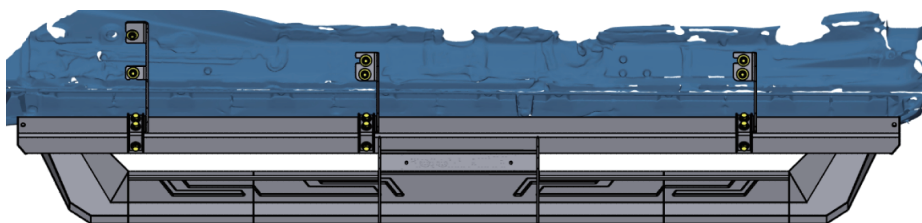
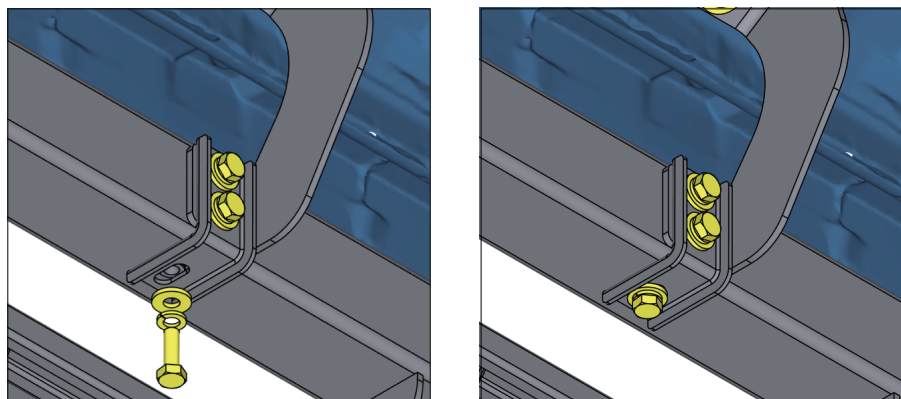
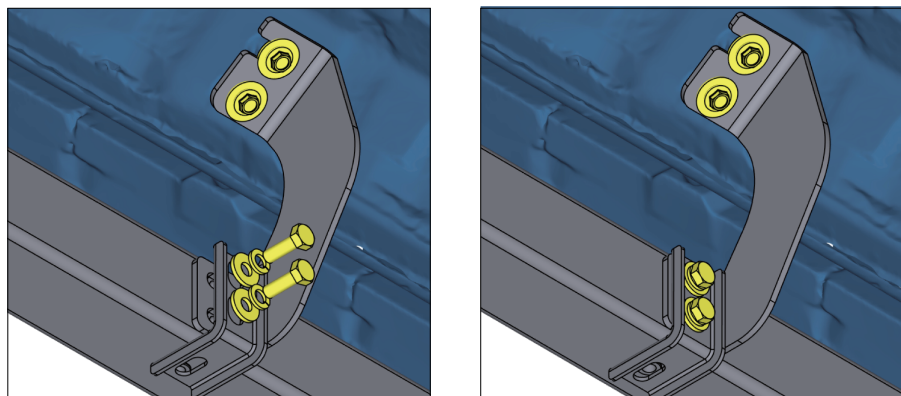


Passenger Side Center/Rear



Step 3:

1. With assistance, lift and attach the step bar to the brackets.
2. Secure (3) support brackets and step bar onto brackets with (9) M8×20 flat washers, (9) M8 lock washers, (9) M8×25 hex bolts.



Front



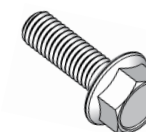
Passenger Right Side

Step 4:

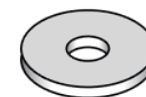
1. Tighten M8 hex bolts on body frame with 15 ft. lbs. torque.
2. Adjust the step bar to level and tighten M8 hex bolts on step bar with 15 ft. lbs. torque.
3. After the step bar installed, periodic check to ensure all mounting hardware remains secure and tight.

Part List:

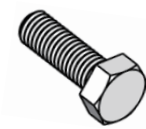
	Qty.	Description
①	× 12	M8×25 Hexagon Flange Bolt
②	× 12	M8×25×2.5 Flat Washer
③	× 18	M8×25 Hexagon Bolt
④	× 18	M8×20×2.0 Flat Washer
⑤	× 18	M8 Lock Washer
⑥	× 1	Driver Side Front Bracket
⑦	× 2	Driver Side Center/Rear Bracket
⑧	× 1	Passenger Side Front Bracket
⑨	× 2	Passenger Side Center/Rear Bracket
⑩	× 6	Support Bracket



①



②



③



④



⑤



⑥



⑦



⑧



⑨



⑩