

INSTALLATION INSTRUCTIONS



Notes

Read this instruction carefully before starting installation.

Proper tools will improve the quality of installation and reduce the time required.

All mirrors are asymmetrical design for better view range.

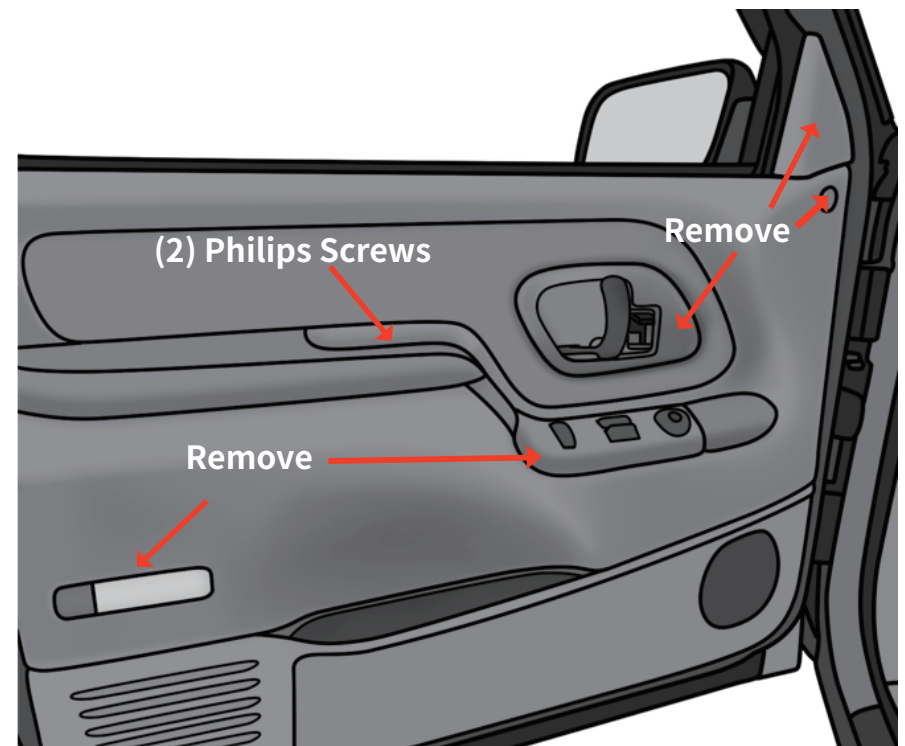
If missing parts or any damage found, please take a picture and contact us.

Reference the vehicle owner's manual to adjust new mirrors.

INSTALLATION INSTRUCTIONS

Step 1:

1. Open the front door to remove the upper extension triangular trim panel.
2. Remove (2) Philips screws in door grab.
3. Remove the inner door lever bezel.
4. Remove the courtesy lamp cover.
5. Remove door switch panel and disconnect all connectors.
6. Remove the cap trim cover.
7. Remove the door trim cover using trim tool.



INSTALLATION INSTRUCTIONS

Step 2:

1. Remove the foam pad from door sheet panel.
2. Remove (3) 10mm hex nuts securing the factory mirror.
3. Carefully remove the factory mirror.

Step 3:

1. Install the short side of stud onto the new mirror mounting base.
2. Take the new mirror, feed studs through the holes on door panel.
3. Install (2) provided hex nuts onto bottom studs.
4. Take the reinforcement bracket onto the upper stud and secure with the last nut.
5. Tighten hex nuts with 80 ft. in. torque.



INSTALLATION INSTRUCTIONS

Step 4:

1. Take the door trim panel, engage all clips on door panel.
2. Reinstall (2) Philips screws in door grab.
3. Reinstall the inner door lever bezel.
4. Reinstall the courtesy lamp cover.
5. Connect door harness to door switch panel and reinstall door switch panel.
6. Reinstall the cap trim cover.

Step 5:

1. Repeat above steps on the passenger side.
2. Carefully adjust the mirrors before first drive.