

Tools Required

8mm Socket
10mm Socket
4mm Hex Bit
Ratchet
6mm Drill Bit

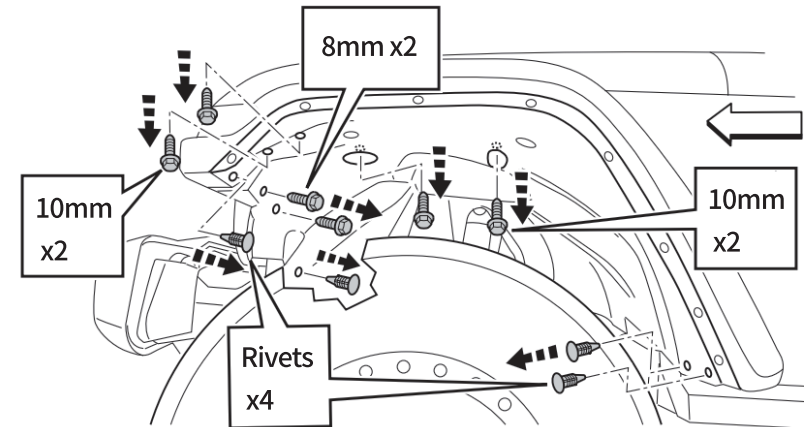


Notes:

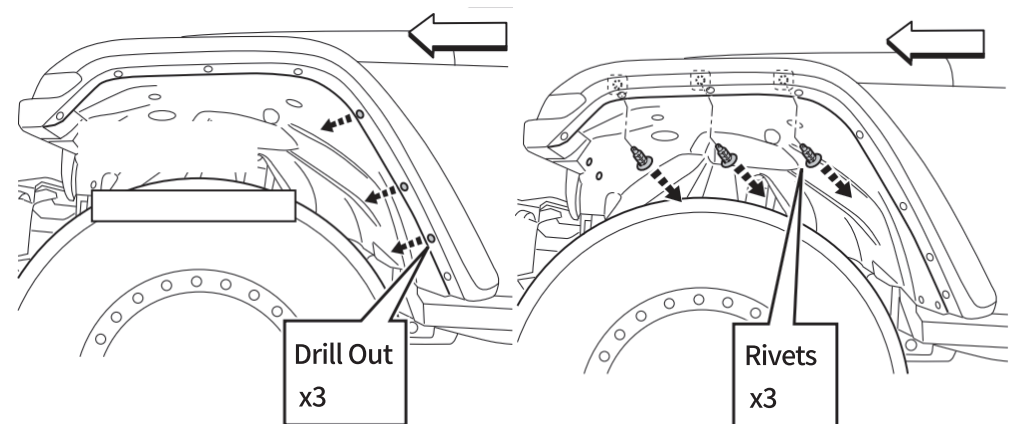
Read this instruction carefully before starting installation.
Proper tools will improve the quality of installation and reduce the time required.
If missing parts or any damage found, please take a picture and contact us.

Step 1:

1. Start from the driver left side. Remove (4) M6 hex bolts and (2) M5 hex bolts from inner fender liner.
2. Pry up and remove (4) rivets from inner fender liner.

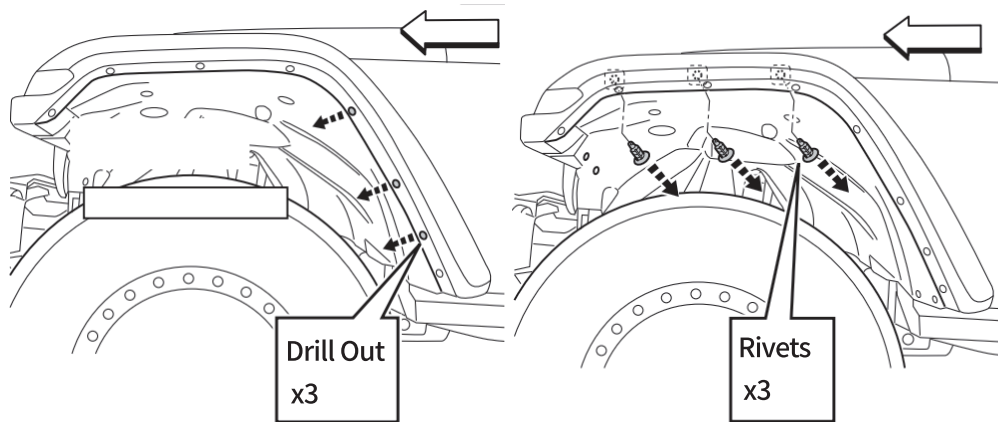


3. Drill out (3) fasteners on fender flare.
4. Pry up and remove (3) rivets from fender flare.



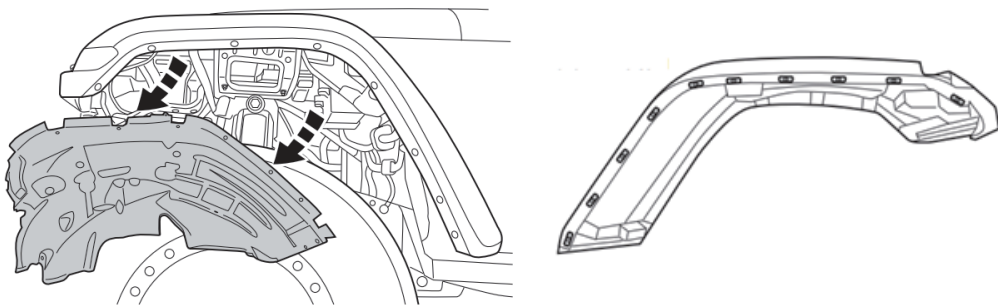
5. Drill out (3) fasteners on fender flare.

6. Pry up and remove (3) rivets from fender flare.



7. Remove factory inner fender liner.

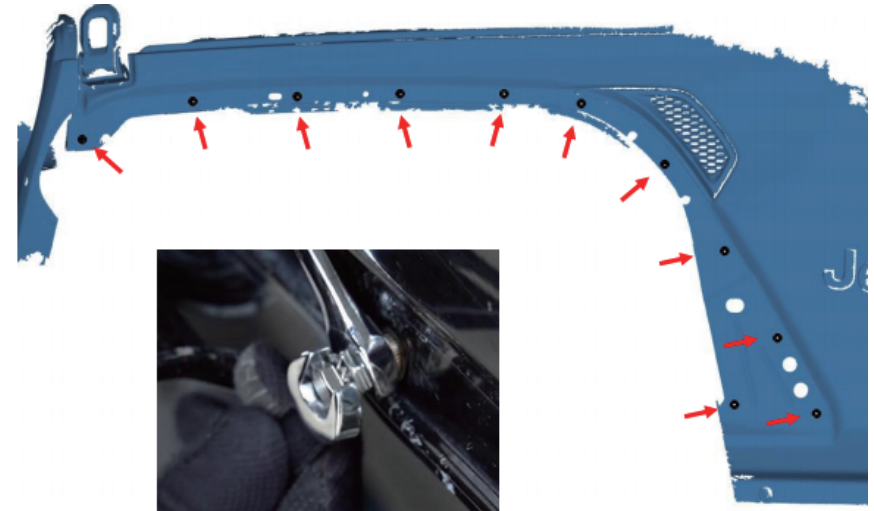
8. Disengage (10) clips and disconnect wire harness to remove the factory front fender flare.



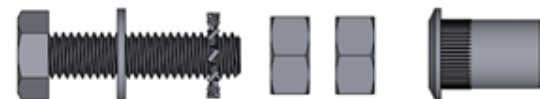
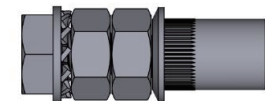
Step 2:

1. Insert and collapse (11) M6 rivet nuts into the fender panel.

2. Driver side is shown.



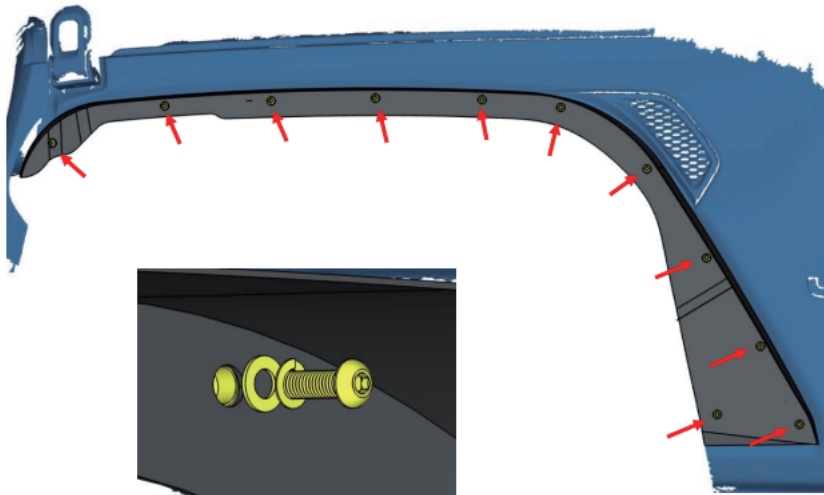
Note: Insert the rivet tool into mounting hole, using a wrench to hold the nut on rivet tool, and using another wrench or socket turn the bolt clockwise to collapse rivet nut into fender panel.



Step 3:

1. Attach the front fender flare onto fender panel.
2. Secure the fender flare to fender panel using (11) M6 bolts, (11) M6 flat washers, (11) M6 lock washers.

Note: Driver side is shown.

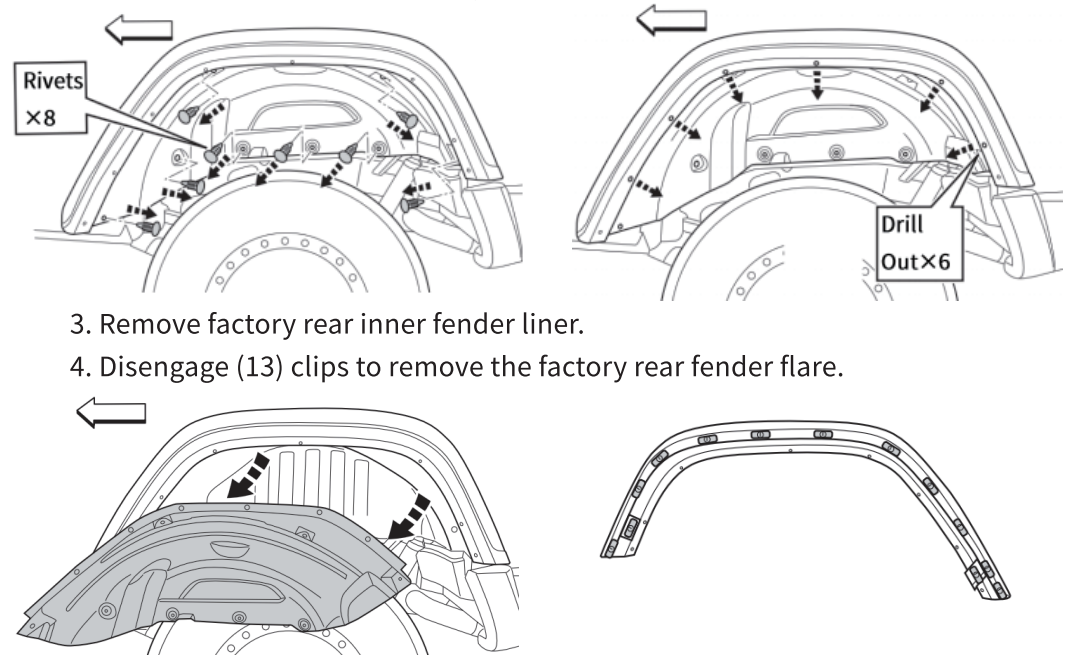


Step 4:

1. Trim and reinstall factory inner fender liner or install another aftermarket fender liner.

Step 5:

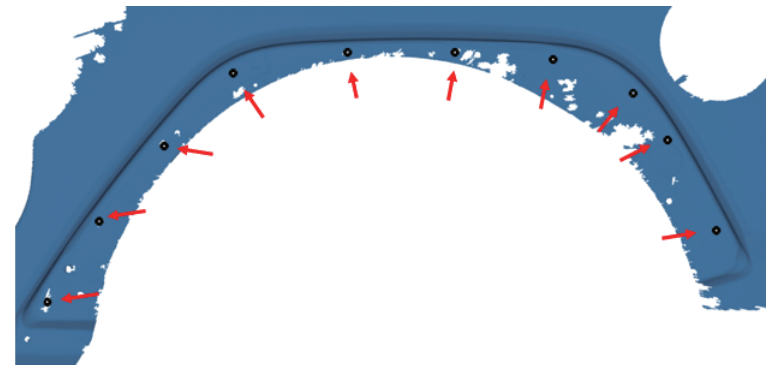
1. Pry up and remove (8) rivets from rear inner fender liner.
2. Drill out (6) fasteners on factory rear fender flare.



3. Remove factory rear inner fender liner.
4. Disengage (13) clips to remove the factory rear fender flare.

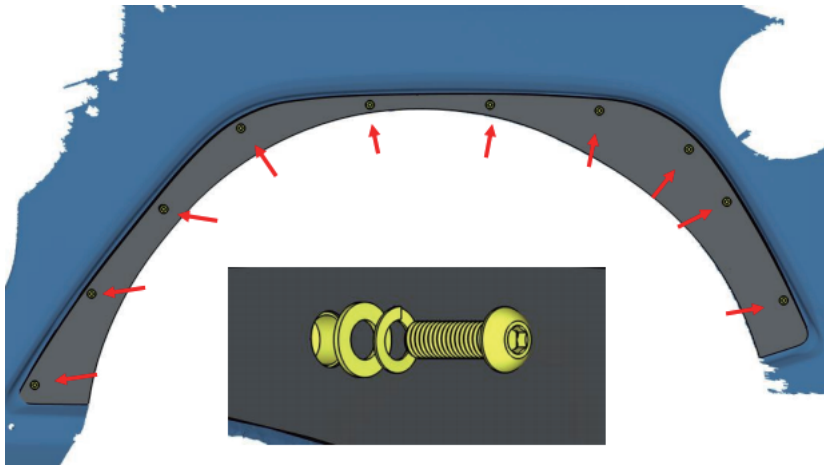
Step 6:

1. Insert and collapse (10) M6 rivet nuts into the fender panel.
2. Driver side is shown.



Step 7:









1. Attach the rear fender flare onto fender panel.
2. Secure the fender flare to fender panel using (10) M6 bolts, (10) M6 flat washers, (10) M6 lock washers.



Step 8:

1. Trim and reinstall factory rear inner fender liner or install another aftermarket fender liner.

Part List:

			
Front Driver Side Fender Flare	× 1	Front Passenger Side Fender Flare	× 1
			
Rear Driver Side Fender Flare	× 1	Rear Passenger Side Fender Flare	× 1
			
M6×20 Allen Head Bolt	× 42	M6 Rivet Nut	× 42
			
M6 Flat Washer	× 42	M6 Lock Washer	× 42
			
M6 Rivet Tool	× 1		