

Before Installation:

Read this instruction carefully before starting installation.

Proper tools will improve the quality of installation and reduce the time required.

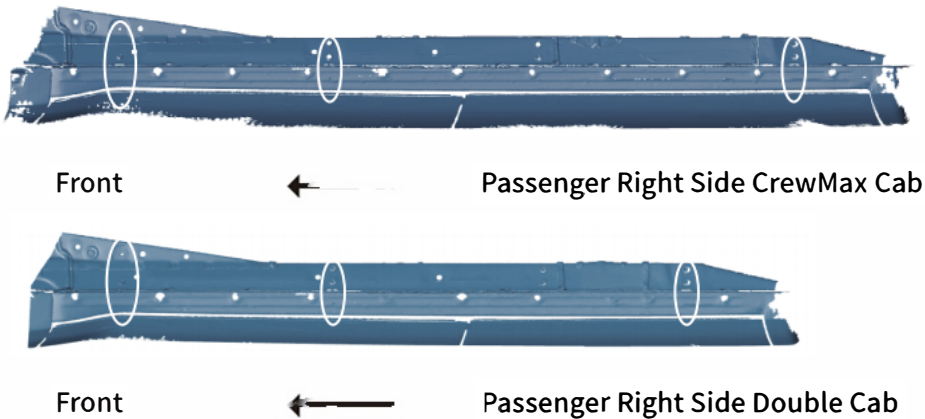
If missing parts or any damage found, please take a picture and contact us.

Professional installation would be highly recommended.

Periodic check to ensure all mounting hardware remains secure and tight.

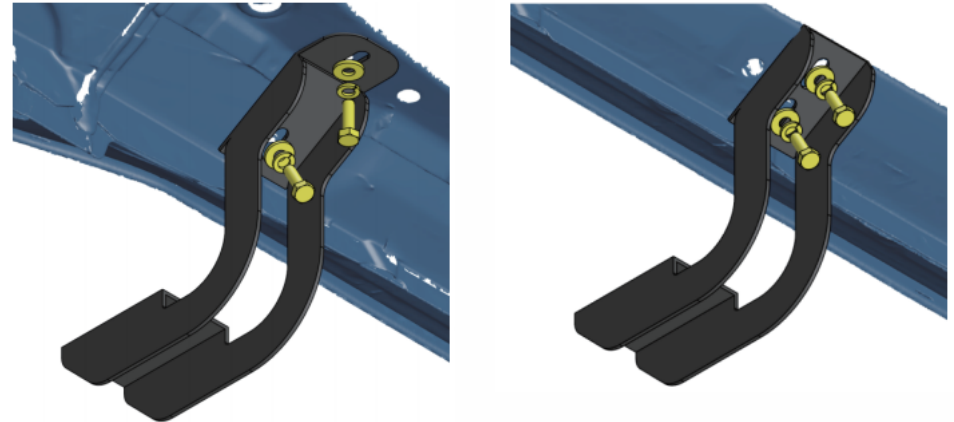
Step 1:

1. Locate (3) mounting positions each side.
2. Remove factory bolts from mounting positions.
3. Clean the sealant and dirt around mounting positions.



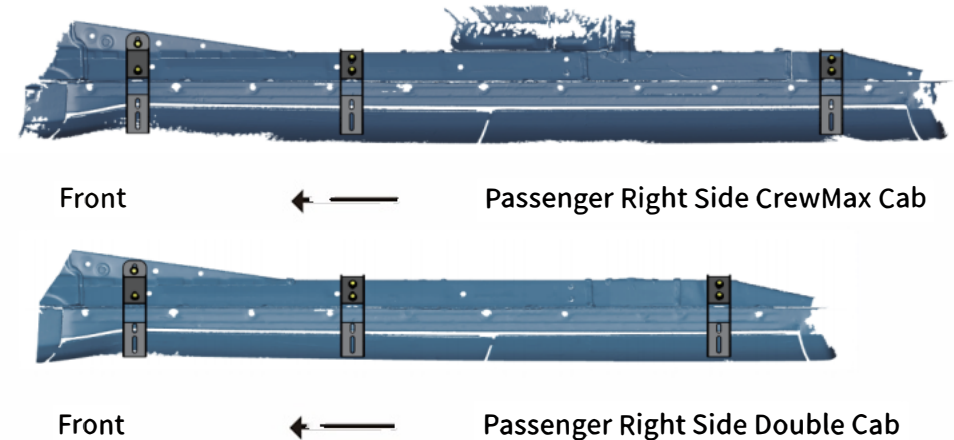
Step 2:

1. Attach the bracket to the inner rocker panel and secure with (2) M8 hex bolts, (2) M8 flat washers, (2) M8 lock washers.
2. Repeat to install remaining brackets, do not fully tighten.



Front Bracket

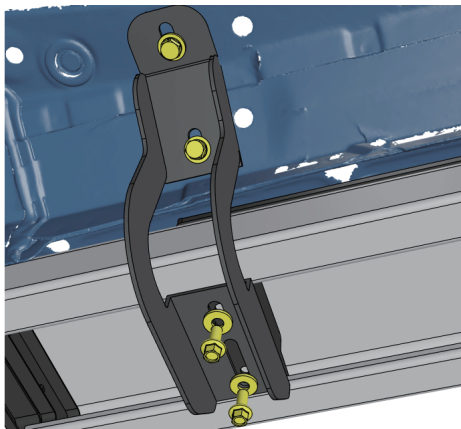
Center/Rear Bracket



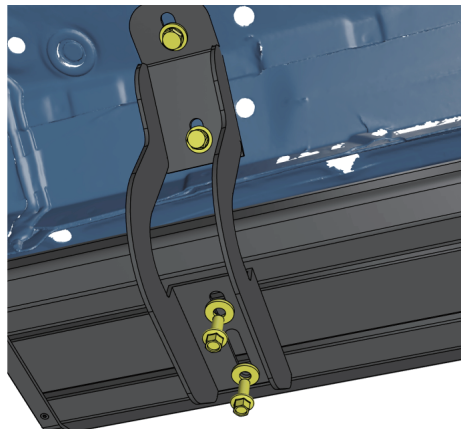
Passenger Right Side Double Cab

Step 3:

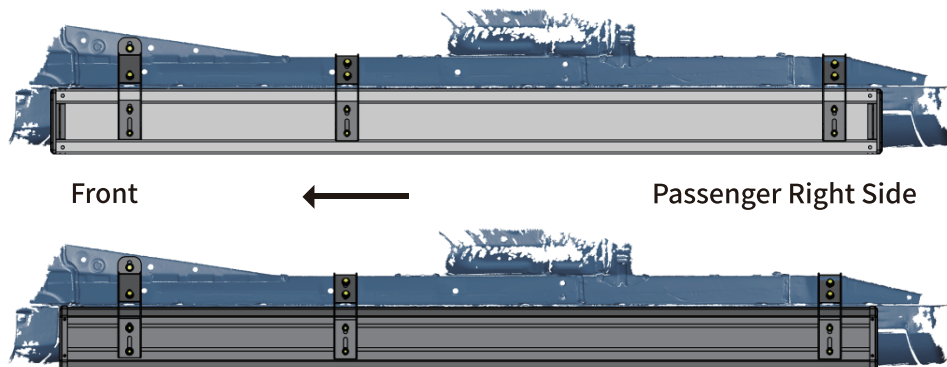
1. Remove (6) M8 hex bolts and (6) M8 flat washer from the step bar.
2. Slide mounting tracks to proper positions.
3. With assistance, lift and attach the step bar to brackets.
Secure the step bar on brackets with (6) M8 hex bolts and (6) M8 flat washers.



Stainless Steel Step Bar



Aluminum Alloy Step Bar

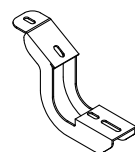


Step 4:

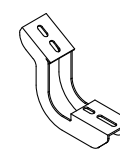
1. Tighten M8 hex bolts on vehicle with 15 ft-lbs. torque.
2. Adjust the step bar to level and tighten M8 hex bolts with 15 ft-lbs. torque.
3. After the step bar installed, periodic check to ensure all mounting hardware remains secure and tight.

Part List:

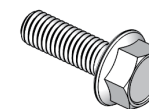
	Qty.	Description
①	×2	Front Bracket
②	×4	Center/Rear Bracket
③	×12	M8 Hexagon Flange Bolt
④	×12	M8 Flat Washer
⑤	×12	M8 Lock Washer
Pre-Installed on Step Bar		
⑥	×12	M8 Hexagon Flange Bolt
⑦	×12	M8 Flat Washer



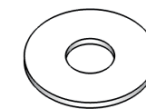
①



②



③



④



⑤



⑥



⑦