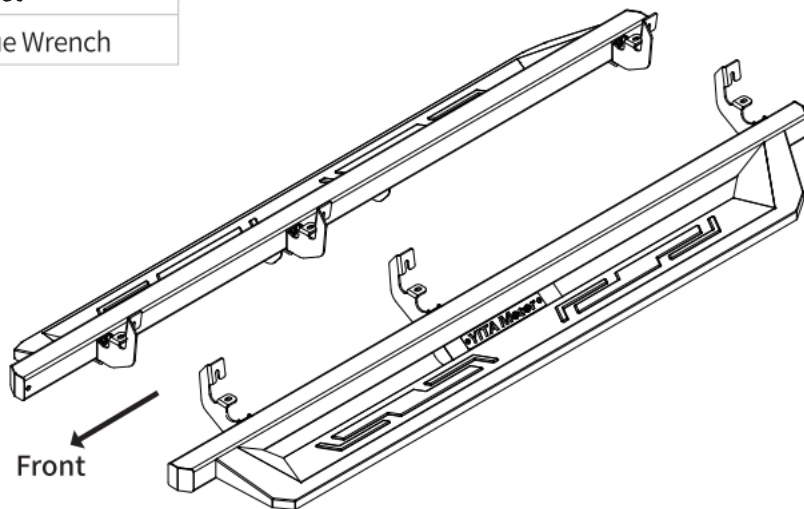


Tools Required

13mm Socket

Ratchet

Torque Wrench



Notes

Read this instruction carefully before starting installation.

Proper tools will improve the quality of installation and reduce the time required.

If missing parts or any damage found, please take a picture and contact us.

Professional installation would be highly recommended.

Periodic check to ensure all mounting hardware remains secure and tight.

Step 1:

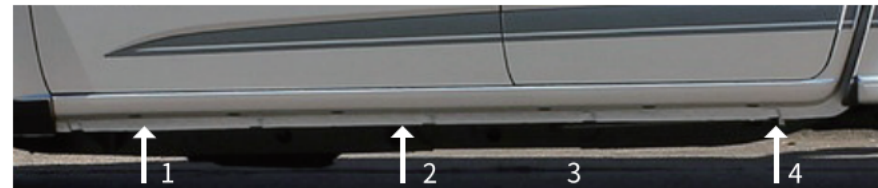
Remove the factory rock rails if equipped.

1. Remove (3) M8 hex bolts and (3) M10 hex bolts on inner rocker panel.
2. Remove the factory rocker rail from inner rocker panel.

Note: The step bar and factory rock rail cannot coexist.

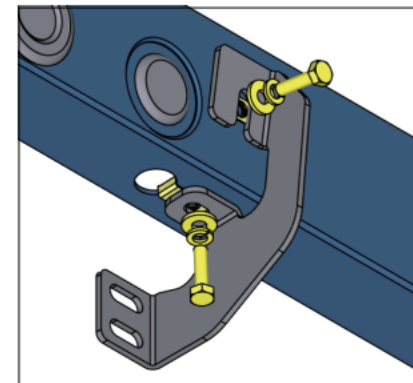
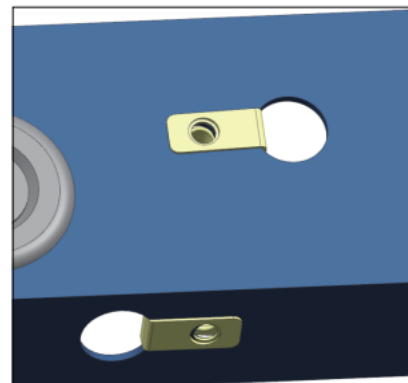
Step 2:

1. Locate the factory rubber plugs along the inner rocker panel. Installation will use the 1st, 2nd and 4th mounting positions.
2. Remove rubber plugs on mounting positions.



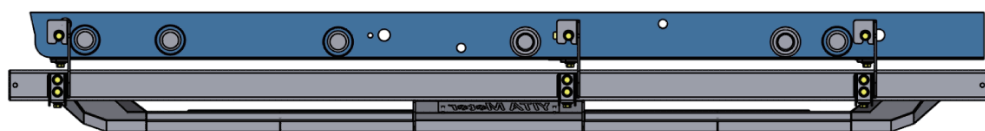
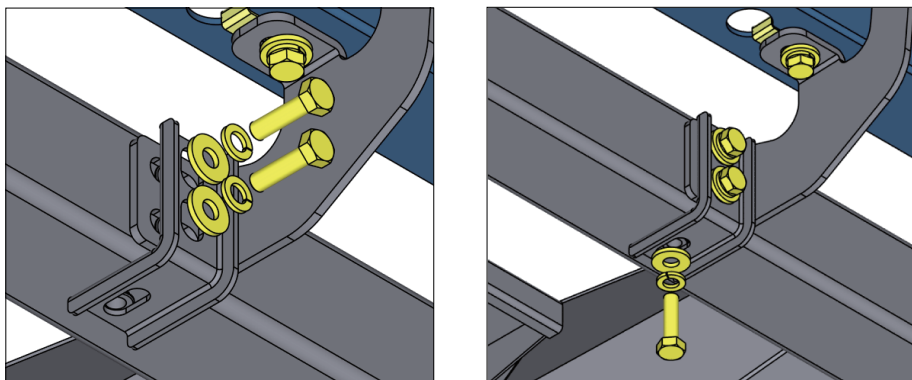
Step 3:

1. Insert M8 clip nuts onto existing holes on inner rocker panel.
2. Attach the bracket to the inner rocker panel.
3. Secure the bracket to inner rocker panel using (2) M8 hex bolts, (2) M8 flat washers, (2) M8 lock washers.
4. Repeat to install other brackets. Do not fully tighten



Step 4:

1. With assistance, lift and attach the step bar to the brackets.
2. Secure (3) reinforcement brackets and step bar onto brackets with (9) M8×20 flat washers, (9) M8 lock washers, (9) M8×25 hex bolts.



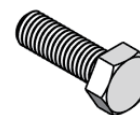
Driver Left Side



Front

Part List:

	Qty.	Description
①	×12	M8×30 Hexagon Bolt
②	×12	M8×20×2.0 Flat Washer
③	×12	M8 Lock Washer
④	×12	M8 Clip Nut
⑤	×18	M8×30 Hexagon Bolt
⑥	×18	M8×20×2.0 Flat Washer
⑦	×18	M8 Lock Washer
⑧	×3	Driver Side Bracket
⑨	×3	Passenger Side Bracket
⑩	×6	Support Bracke



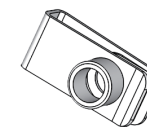
①



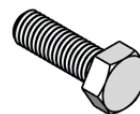
②



③



④



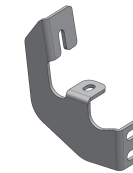
⑤



⑥



⑦



⑧



⑨



⑩

Step 5:

1. Tighten M8 hex bolts on body frame with 15 ft. lbs. torque.
2. Adjust the step bar to level and tighten M8 hex bolts on step bar with 15 ft. lbs. torque.
3. After the step bar installed, periodic check to ensure all mounting hardware