

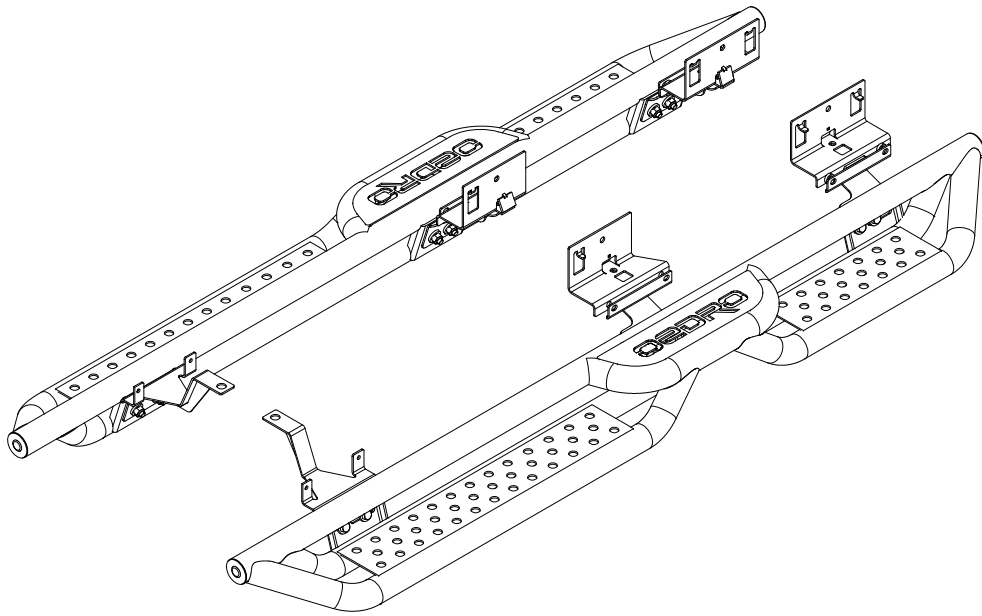
Tools Required

10mm, 13mm, 16mm Socket

10mm, 16mm Wrench

Ratchet

Torque Wrench



Notes:

Read this instruction carefully before starting installation.
Proper tools will improve the quality of installation and reduce the time required.
If missing parts or any damage found, please take a picture and contact us.
Professional installation would be highly recommended.
Periodic check to ensure all mounting hardware remains secure and tight.

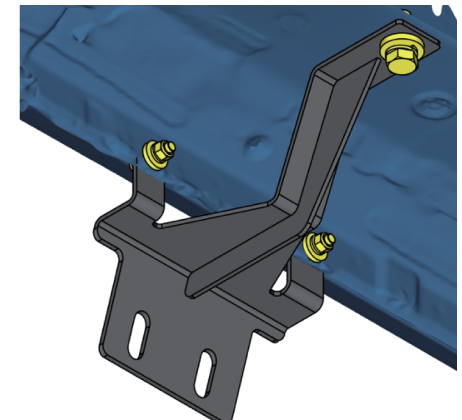
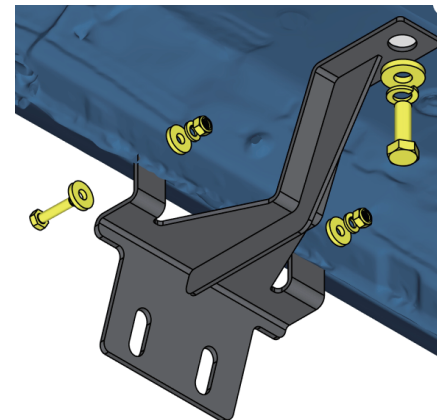
Step 1:

1. Locate three mounting positions each side.
2. Remove factory rock rail or rubber plugs from inner rocker panel.
3. Clean the dirt and sealant around mounting positions.



Step 2:

1. Take the front mounting bracket and attach to the first mounting position.
2. Secure the front mounting bracket to inner rocker panel with (1) M10 hex bolt, (1) M10 flat washer, (1) M10 lock washer.
3. Secure the front mounting bracket to pinch weld with (2) M6×25 hex bolts, (4) M6 flat washers, (2) M6 lock washers, (2) M6 hex nuts.

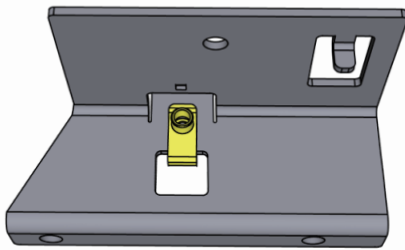


Step 3:

1. Insert and knock the M8 clip nuts onto the center and rear upper brackets.
2. Make sure the thread align with the hole on upper brackets.

Note: The clip nuts may extremely tight.

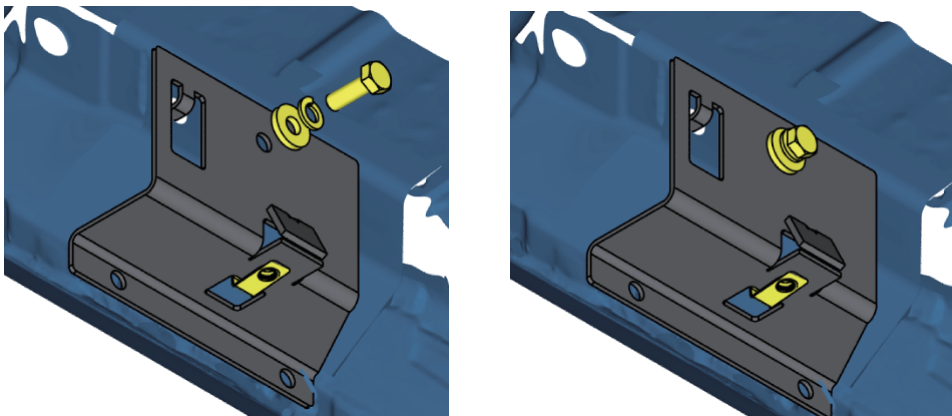
Center passenger side bracket is shown.



Step 4:

1. Attach the center upper bracket to the second mounting position.
Ensure the locating tab is inserted into rocker panel hole.
2. Secure the center upper mounting bracket with (1) M10 hex bolt, (1) M10 flat washer, (1) M10 lock washer.

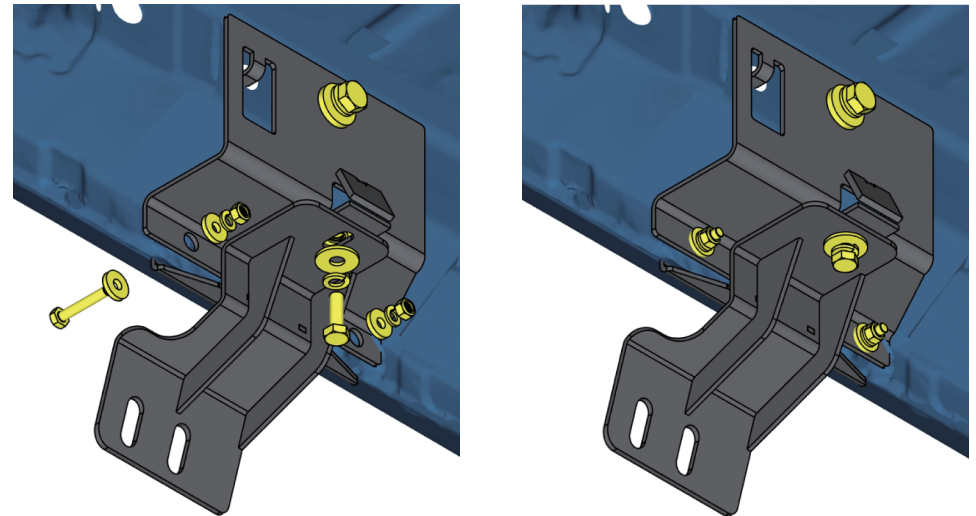
Note: Center passenger side bracket is shown.



Step 5:

1. Take the lower bracket and attach to the center upper bracket.
2. Secure the center lower bracket to pinch weld with (2) M6×35 hex bolts, (4) M6 flat washers, (2) M6 lock washers, (2) M6 hex nuts.
3. Secure the lower bracket to upper bracket with (1) M8 hex bolt, (1) M8 flat washer, (1) M8 lock washer.

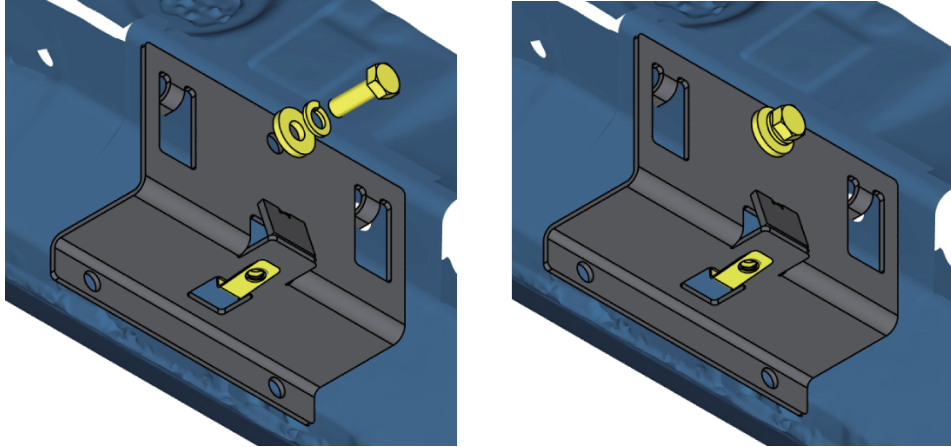
Note: Center passenger side bracket is shown.



Step 6:

1. Attach the rear upper bracket to the second mounting position.
Ensure the locating tabs are inserted into rocker panel holes.
2. Secure the rear upper mounting bracket with (1) M10 hex bolt, (1) M10 flat washer, (1) M10 lock washer.

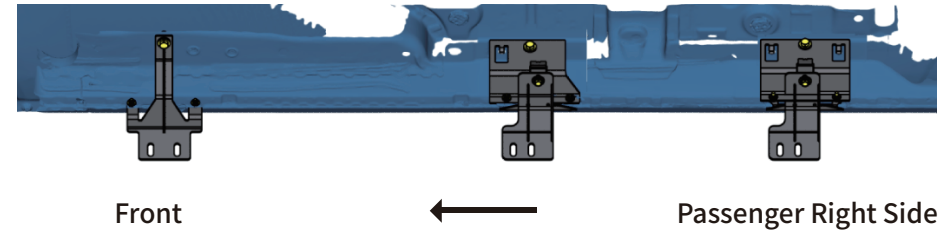
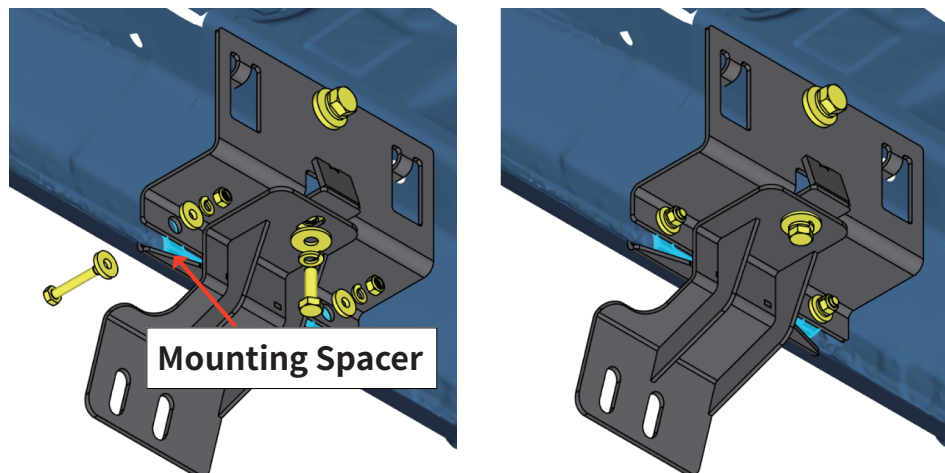
Note: Rear passenger side bracket is shown.



Step 7:

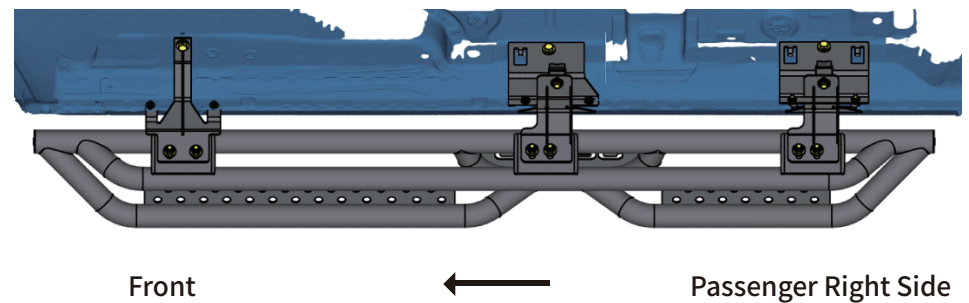
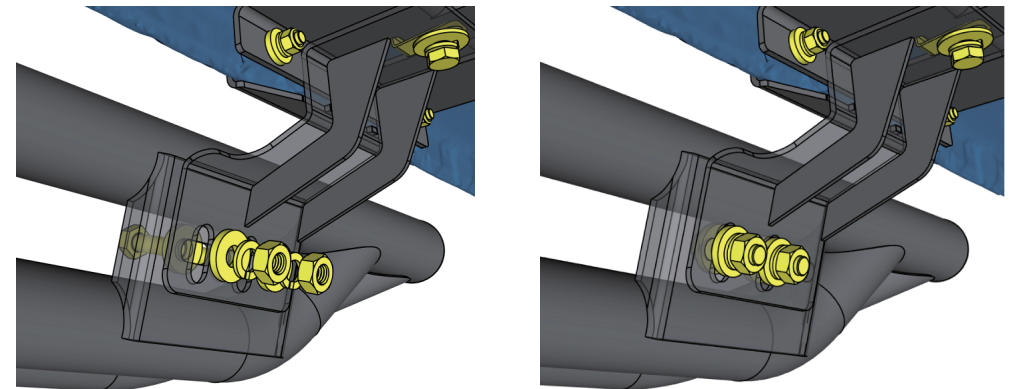
1. Take the lower bracket and attach to the rear upper bracket.
2. Insert the mounting spacer between the lower bracket and pinch weld.
3. Secure the lower bracket to pinch weld with (2) M6×35 hex bolts, (4) M6 flat washers, (2) M6 lock washers, (2) M6 hex nuts.
4. Secure the lower bracket to upper bracket with (1) M8 hex bolt, (1) M8 flat washer, (1) M8 lock washer.

Note: Rear passenger side bracket is shown.



Step 8:

1. With assistance, lift and attach the step bar to brackets.
2. Secure the step bar on brackets with (6) M10 hex bolts and (12) M10 flat washers, (6) M10 lock washers, (6) M10 hex nuts.



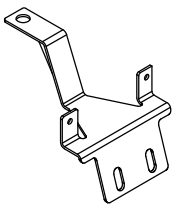
Step 9:

1. Tighten all mounting hardware refer to following diagram.
2. Periodic check to ensure all mounting hardware remains secure and tight.

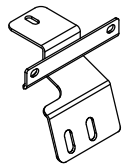
	M6	M8	M10
Torque	8ft. lbs	15ft. lbs	31ft. lbs

Part List:

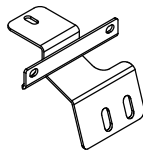
	Qty.	Description
A	×2	Front Bracket
B	×2	Driver Left Side Lower Bracket
C	×2	Passenger Right Side Lower Bracket
D	×1	Center Driver Side Upper Bracket
E	×1	Center Passenger Side Upper Bracket
F	×2	Rear Upper Bracket
G	×2	Mounting Spacer



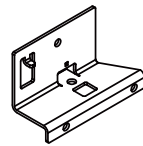
A



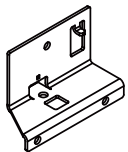
B



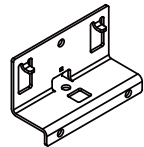
C



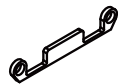
D



E



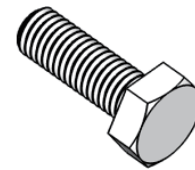
F



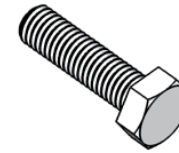
G

Mounting Hardware List:

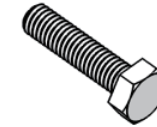
	Qty.	Description	⑦	×24	M6×18 Flat Washer
①	×18	M10×30 Hexagon Bolt	⑧	×18	M10 Lock Washer
②	×4	M8×30 Hexagon Bolt	⑨	×4	M8 Lock Washer
③	×4	M6×25 Hexagon Bolt	⑩	×12	M6 Lock Washer
④	×8	M6×35 Hexagon Bolt	⑪	×12	M10 Hexagon Nut
⑤	×30	M10×25 Flat Washer	⑫	×12	M6 Nylon Lock Nut
⑥	×4	M8×24 Flat Washer	⑬	×4	M8 Clip Nut



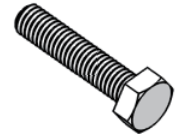
①



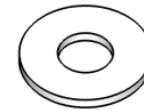
②



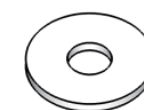
③



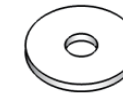
④



⑤



⑥



⑦



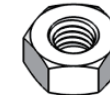
⑧



⑨



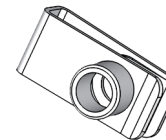
⑩



⑪



⑫



⑬