

#### Tools Required

13mm, 10mm Socket
10mm Wrench
Ratchet
Torque Wrench



### Before Installation:

Read this instruction carefully before starting installation.

Proper tools will improve the quality of installation and reduce the time required.

If missing parts or any damage found, please take a picture, and contact us.

**Professional installation would be highly recommended.**

Periodic check to ensure all mounting hardware remains secure and tight.

### Step 1:

1. Remove factory rock rails if equipped. Three mounting positions each side.
2. Remove (6) M6 hex nuts on rocker panel and (3) M8 hex bolts on body frame.

**Note: The step bar and factory rock rail cannot coexist.**

### Step 2:

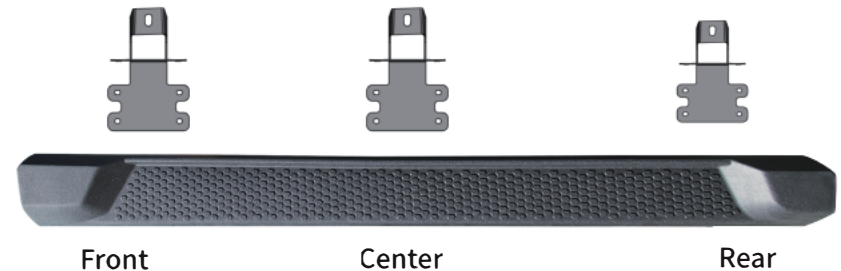
1. Take the bracket of the new step bar, clean the rust-proof painting on the studs
2. Install the (3) brackets onto step bar with the (12) M8 hex bolts, (12) M8×20 flat washers, (12) M8 lock washers.

**Verify the bracket before installation. Do NOT fully tighten.**

Front Bracket: 10"

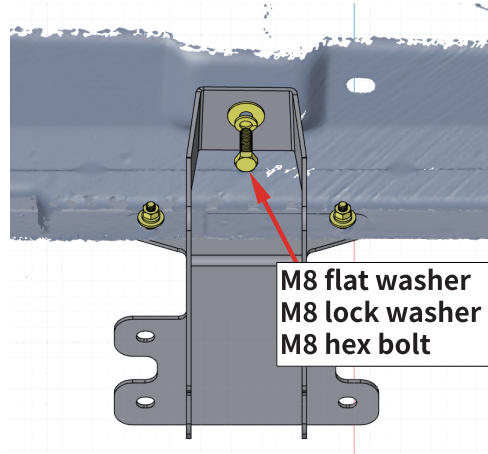
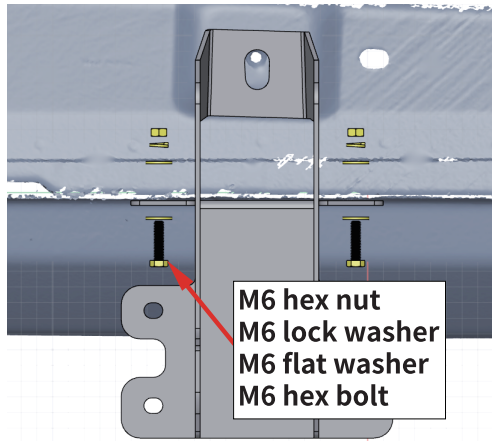
Center Bracket: 10"

Rear Bracket: 8-1/4"

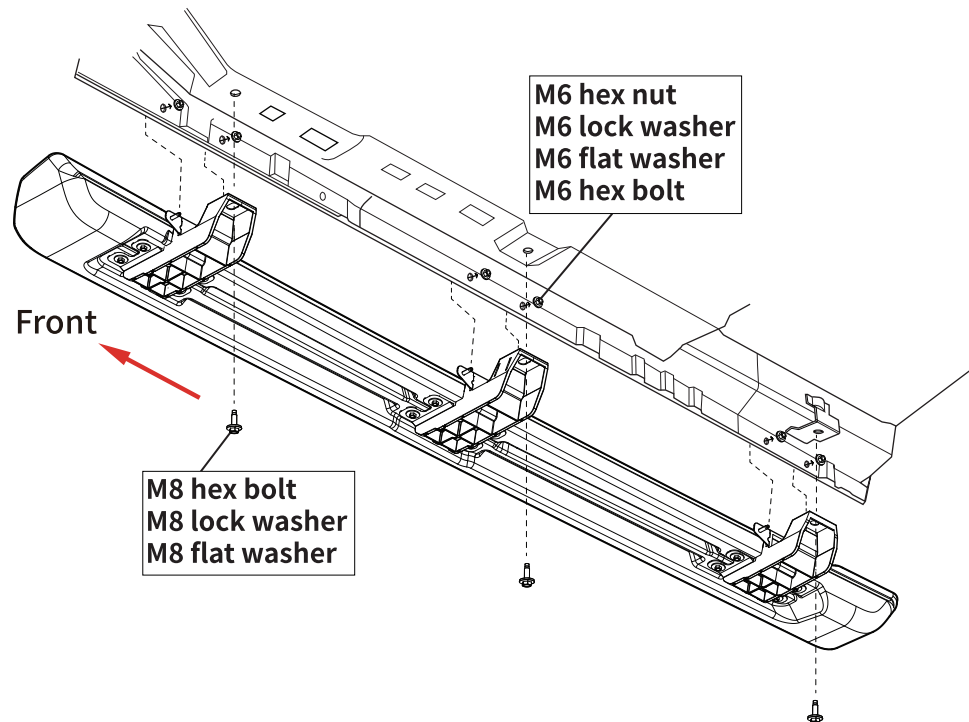


### Step 3:

1. After the step bar assembled, lift and attach the step bar to the rocker panel.
2. Align the studs on step bar with mounting holes on the rocker panel.
3. Secure the step bar onto pinch weld with the (6) M6 hex bolts, (6) M6 flat washers, (6) M6 lock washers, (6) M6 hex nuts.
4. Secure the step bar onto rocker panel with (3) M8 hex bolts, (3) M8×28 flat washers, (3) M8 lock washers.



**Note:** The center bracket is shown. Do NOT fully tighten.

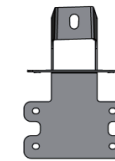


## Step 4:

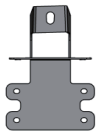
1. Tighten M8 hex bolts on vehicle with 15 ft. lbs. torque.
2. Tighten M6 hex nuts on pinch weld with 7 ft. lbs. torque.
3. Adjust the step bar to level and tighten the M8 hex bolts on step bar with 10 ft. lbs. torque.

## Part List:

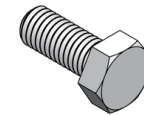
	Qty.	Description
①	×4	Front/Center Bracket
②	×2	Rear Bracket
③	×30	M8×20 Hexagon Bolt
④	×12	M6×30 Hexagon Bolt
⑤	×6	M8×28 Flat Washer
⑥	×24	M8×20 Flat Washer
⑦	×24	M6×20 Flat Washer
⑧	×30	M8 Lock Washer
⑨	×12	M6 Lock Washer
⑩	×12	M6 Hexagon Nut



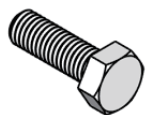
①



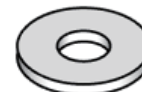
②



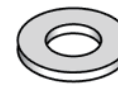
③



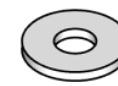
④



⑤



⑥



⑦



⑧



⑨



⑩