

Tools Required

16mm, 13mm Socket
19mm, 13mm Wrench
Ratchet
Torque Wrench



Before Installation:

Read this instruction carefully before starting installation.

Proper tools will improve the quality of installation and reduce the time required.

If missing parts or any damage found, please take a picture, and contact us.

Professional installation would be highly recommended.

Periodic check to ensure all mounting hardware remains secure and tight.

The front spot lights require self-wiring, the harness is not include.

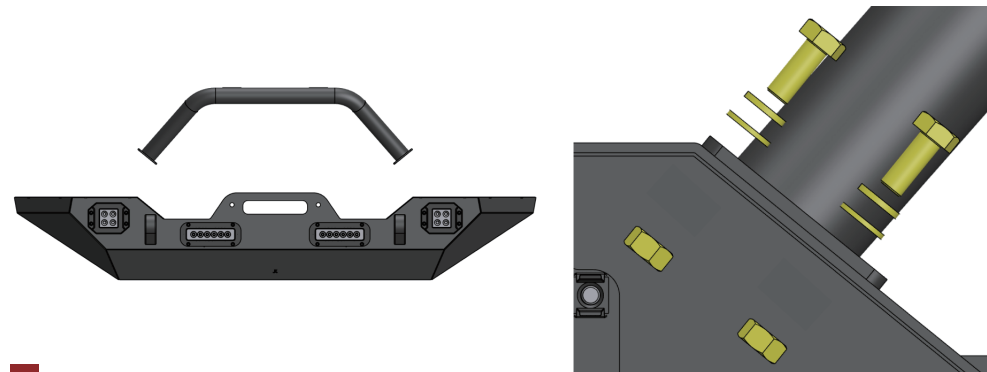
For more towing and off-road recovery information, please check the vehicle owner's manual.

Step 1:

1. Remove (4) rivets holding the splash guard and remove the splash guard.
2. Remove (2) rivets securing the frame cover between the grille and front bumper.
3. Disconnect fog lamp connectors.
4. Remove (8) M12 hex nuts holding the bumper onto the frame rail.
5. Carefully remove the front bumper.

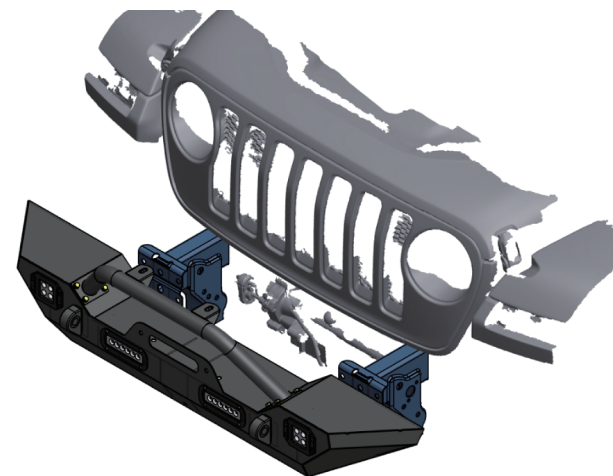
Step 2:

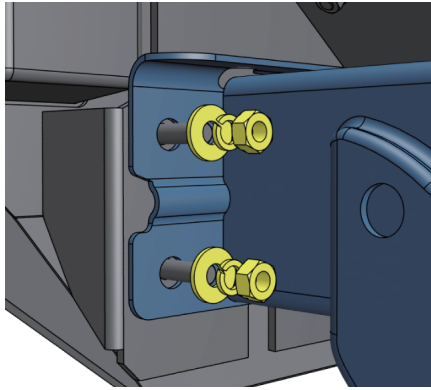
1. Position the bull bar to the new front bumper.
2. Secure bull bar using (8) M8 hex bolts, (8) M8 flat washers, (8) M8 lock washers, (4) M8 hex nuts.
3. Tighten M8 hardware with 15 ft. lbs. torque.



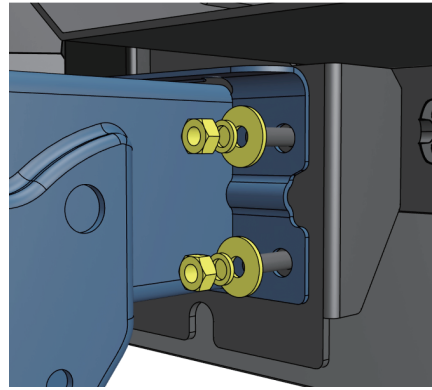
Step 3:

1. With assistance, place the bumper onto frame rail.
2. Secure the bumper to frame rail with (8) M10 flat washers, (8) M10 lock washers, (8) M10 hex nuts.
3. Tighten M10 hardware with 31 ft. lbs. torque.





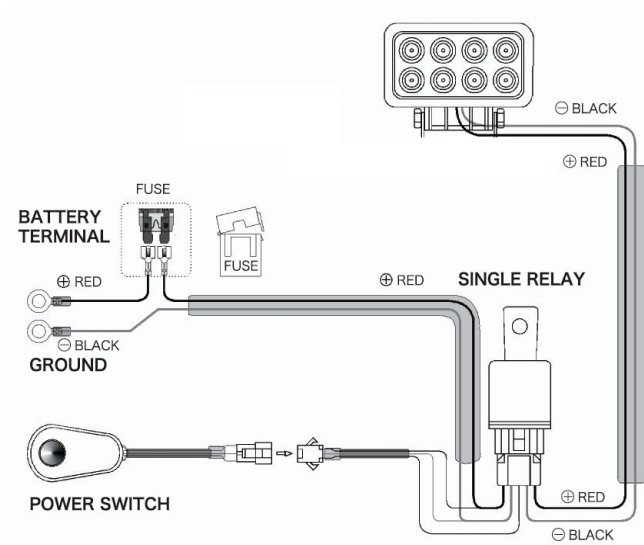
Outer Side



Inner Side

Step 4:

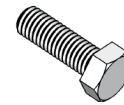
1. Install (2) D-rings on shackle mounting brackets.
2. After bumper installed, periodic check to ensure all mounting hardware remains secure and tight.



Wiring diagram, the harness not include.

Part List:

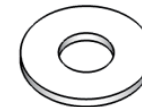
	Qty.	Description
①	×8	M8×25 Hexagon Bolt
②	×8	M8×20 Flat Washer
③	×8	M10×30 Flat Washer
④	×8	M8 Lock Washer
⑤	×8	M10 Lock Washer
⑥	×4	M8 Hexagon Nut
⑦	×8	M10 Hexagon Nut
⑧	×1	Bull Bar
⑨	×2	D-Ring Shackle



①



②



③



④



⑤



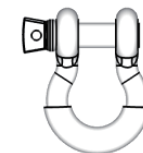
⑥



⑦



⑧



⑨