

## FOR TACOMA 2024+ POCKET STYLE FENDER FLARES KF00407

### FEATURE

High quality injection molding fender flares

Made from light weight impact resistance Polypropylene,  
non-cracking, non-warping, 100% UV-resistant.

Professional installation is always recommended

### Step 1 Before Installation

**A.Fit:** Fit of the flare to vehicle should be confirmed. Some  
e fling, sanding, or cutting may be adopted for proper fit if  
necessary.

**B.Painting:** (optional) if paint is desired it must be done pr  
ior of installing flares on vehicle. Clean outer surface with  
a good grade degreaser.

**C.Metal protection:** Rust resistance paint of all exposed f  
asteners and bare metal should be done BEFOR installin  
g flares. Undercoating the inner fender wells should be d  
one AFTER flare attachments have been completed.

**D.Flares** may interfere with existing decals on vehicle. If  
you wish. Remove decals prior to installation of flares.

### Tools for Installation:

- Utility Knife
- Vise Grips
- Socket Wrench
- 1/2" Wrench
- 5/16" Socket
- 10mm Socket

## Included in Hardware Kit:

- |  |  |   |   |  |   |
|--|--|---|---|--|---|
| 1.<br><br>SW1-0036,<br>M6-.3 x 20mm Hex<br>Magni Black Screw,<br>32 pcs | 2.<br><br>SW1-0067,<br>5/16 x 18 x 3/8"<br>SS Torx Screw,<br>32 pcs | 3.<br><br>WA1-0012,<br>.320 x .700 x .03<br>SS Washer,<br>32 pcs | 4.<br><br>NU1-0019,<br>5/16-18 Jam Fin.<br>Nylock Nut,<br>32 pcs | 5.<br><br>SW1-0052,<br>T-45 Torx Bit,<br>1 pc | 6.<br><br>GP1-0005,<br>Large Wiper Style<br>Edge Trim,<br>330 inches |
| 7.<br><br>ET1-0002,<br>Edge Trim Tool,<br>1 pc                          | 8.<br><br>NU1-0013<br>10A-4 Magni<br>Black Clip,<br>4 pcs           | 9.<br><br>Front Fender Flare<br>2 pcs                            | 10.<br><br>Rear Fender Flare<br>2 pcs                            | 11.<br><br>Front Bracket<br>2 pcs             |   |

# Toyota Fender Flares

## Edge Trim Installation

2

- A) Peel two to three inches of red vinyl backing away from Edge Trim tape. Applying the adhesive side of the edge trim to the inner side of the flare, affix the edge trim to the top edge of the flare (the portion that comes in contact with the vehicle).
- B) Press edge trim into place along the top edge of the flare in one-foot increments, pulling red vinyl backing free as you continue to work your way around the top edge of the flare.



## Flare Pocket Hardware Installation

3



Put a Washer (WA1-0029) on each Bolt (SW1-0087).

4



Put each Bolt/Washer combination through a pocket hole in the flare, Bolt head and Washer on the outside.

5



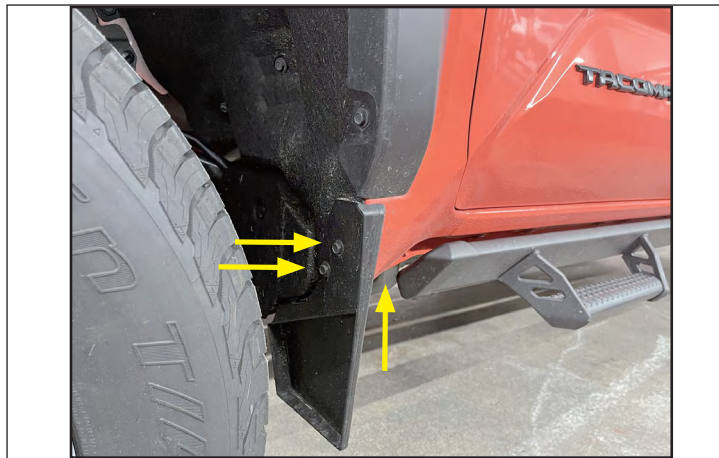
Place a Nut (NU1-0019) over the end of each Bolt and tighten, using a 1/2" wrench for the Nut and the supplied Torx Bit (SW1-0052) for the Bolt. Repeat for remaining pockets.

# Toyota Fender Flares

## Front Flare Installation Procedures

6

If factory mud flap is installed, remove (3) factory screws from the mud flap. Note: (2) of the screws are removed from underneath. Save screws for reinstallation.



7

Remove (7) factory screws.



8

Loosen screws one full turn.



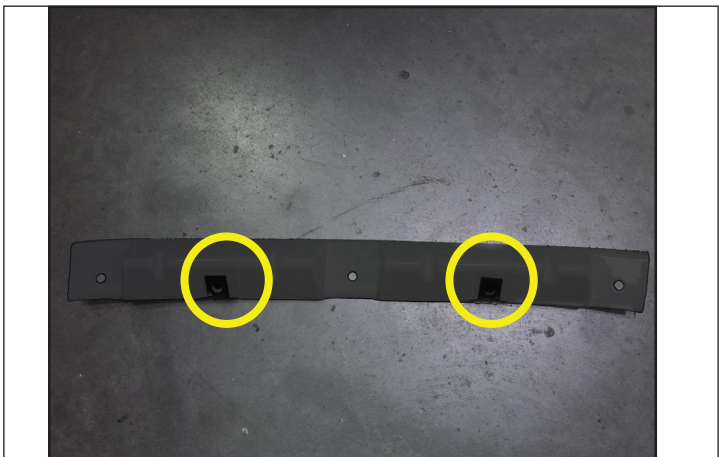
9

Remove flare by pulling part away from side of vehicle



10

Verify that (2) Clips (NU1-0013) are installed on supplied bracket.



11

Line up the holes in the inner piece with the (2) uppermost factory holes.





# Toyota Fender Flares

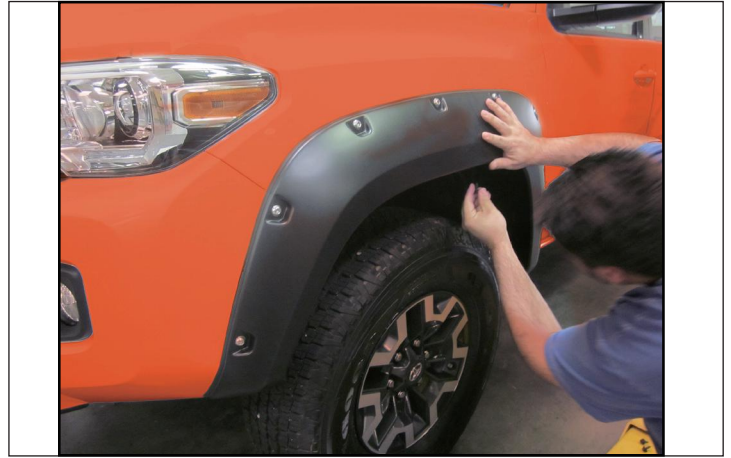
12

Using two supplied screws (SW1-0036), attach bracket to wheel well. Tighten all screws.



13

Position flare on fender, pressing inward on the flare, line up the flare mounting holes with the mounting clips on the bracket. Install 2 supplied screws (SW1-0036) through the flare and into the clips on the bracket. Do not tighten.



14

Still holding flare to fender, install supplied screws (SW1-0036) into remaining mounting holes (9 places).



15

Tighten all screws. Installation Complete.



## Rear Flare Installation Procedures

16

If factory mud flap is installed, remove (4) factory screws from the mud flap. Note: (2) of the screws are removed from underneath. Save screws for reinstallation.



17

Remove seven factory screws. *If there is no factory flare installed, go to Step 23.*



# Toyota Fender Flares

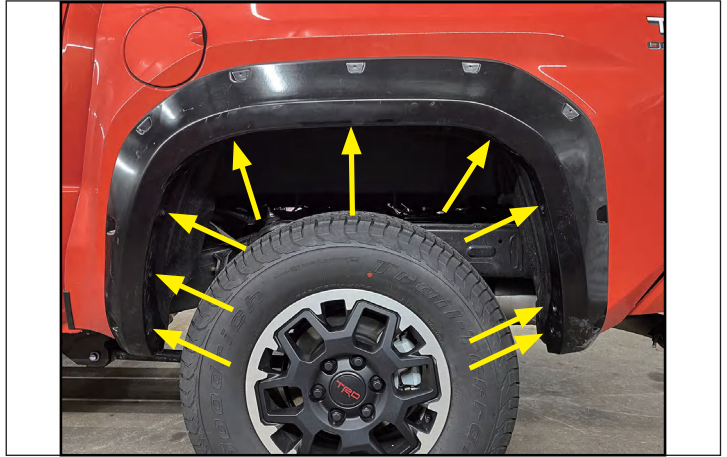
18

Remove flare by carefully pulling part away from side of vehicle.



19

Holding flare to fender, install supplied screws (SW1-0036) into mounting holes (9 places).



20

Tighten all screws. Installation complete.



21

Using supplied Edge Trim Tool, seat edge trim against vehicle by hooking curved end under edge trim at one end of flare. Next, slide around outer edge of flare to the other end.



22

Using flat end of supplied Edge Trim Tool, seat edge trim against flare by inserting straight end between edge trim and flare at one end. Next, slide around entire edge to the other end.

