

BEFORE INSTALLATION

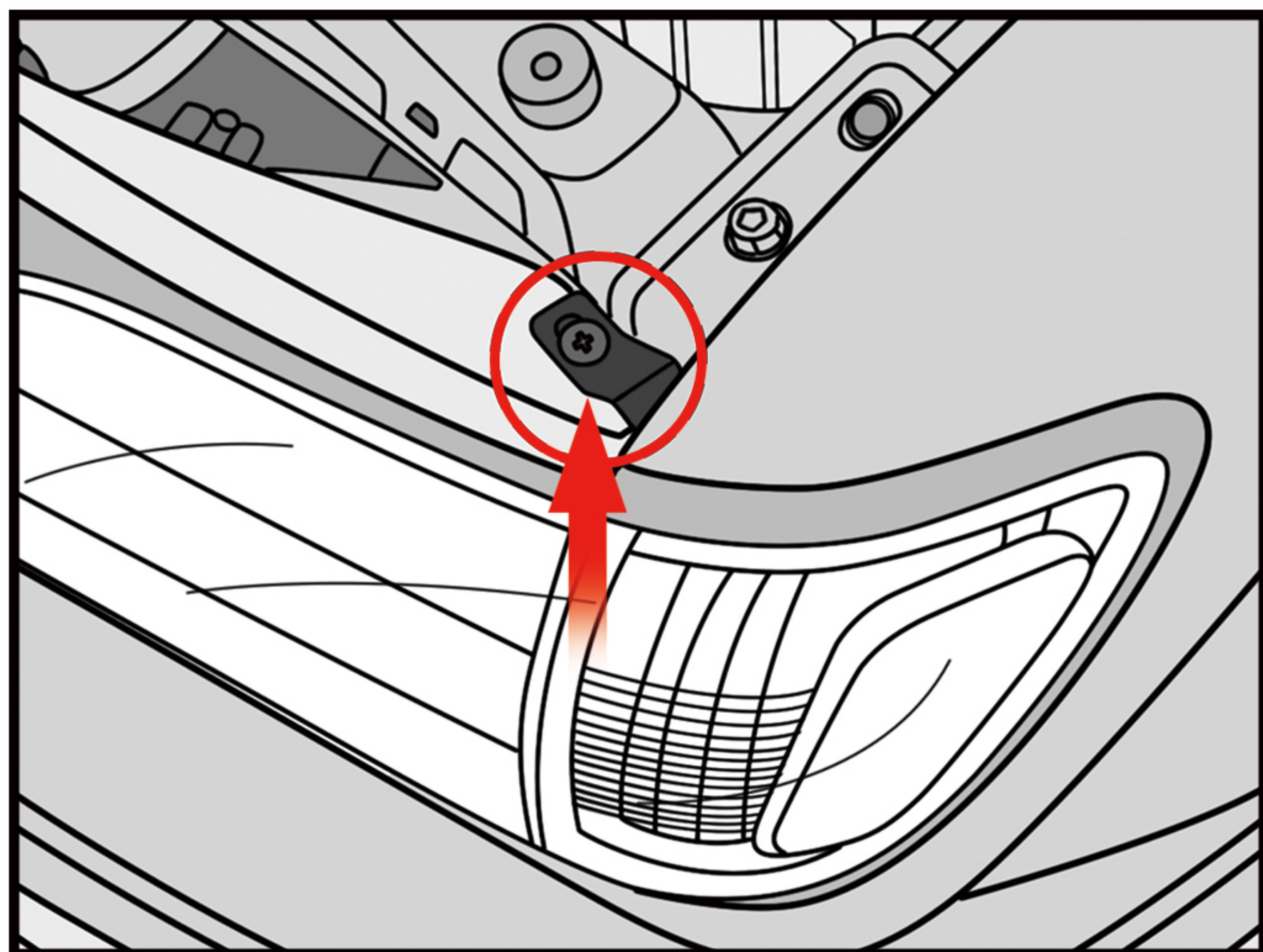
- Professional Installation would be highly recommended, please seek assistance at local automotive shop if you have any difficulties in installing.
- Safety comes first ! Do not start to work on any vehicle without protection.
- An assistant would be better assist you in the bumper disassembly work.
- Keep cautions to prevent being scratched when working on any parts from the body of the vehicle.
- Do not touch the bulbs or the wire assembly before they are cooled to avoid the burns.

PRODUCT NUMBER

OEM: 81150-04110, 81110-04110

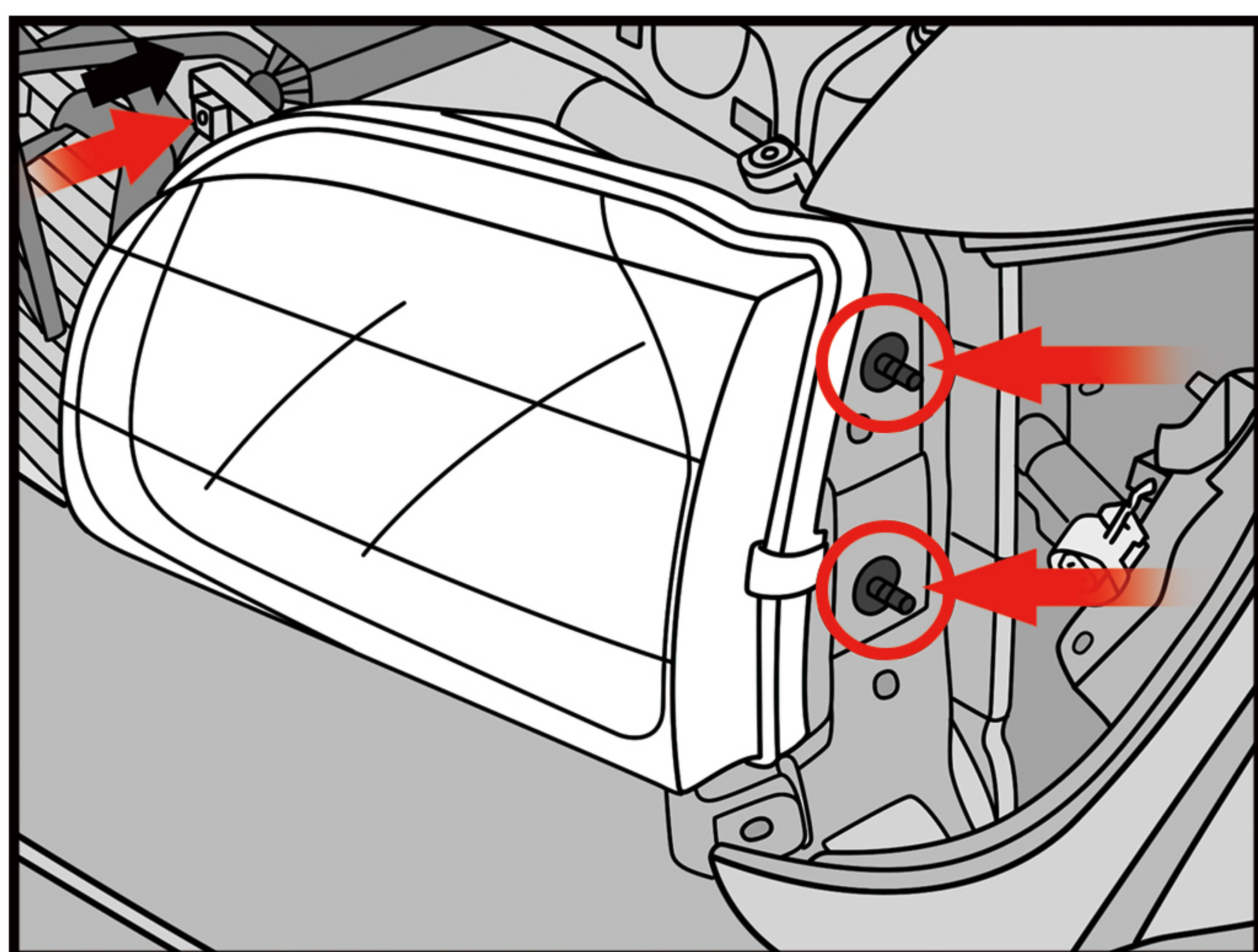


STEP 1



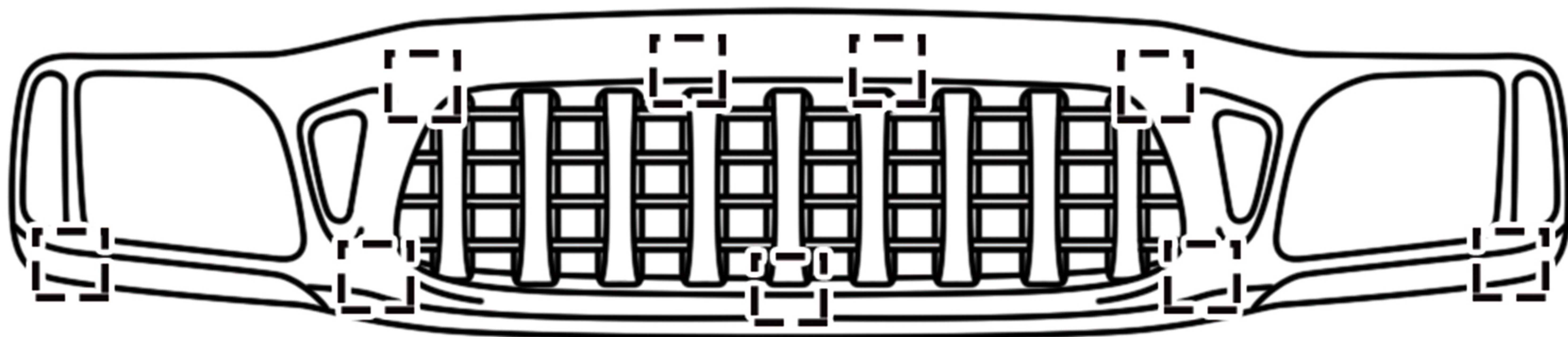
1. Remove the Philips screw holding the corner light onto the grille.
2. Pull the corner light assembly forward and disconnect wire harness.
3. Twist signal light socket counterclockwise and remove from the old corner light assembly.
4. Repeat to remove the other side corner light assembly.

STEP 2



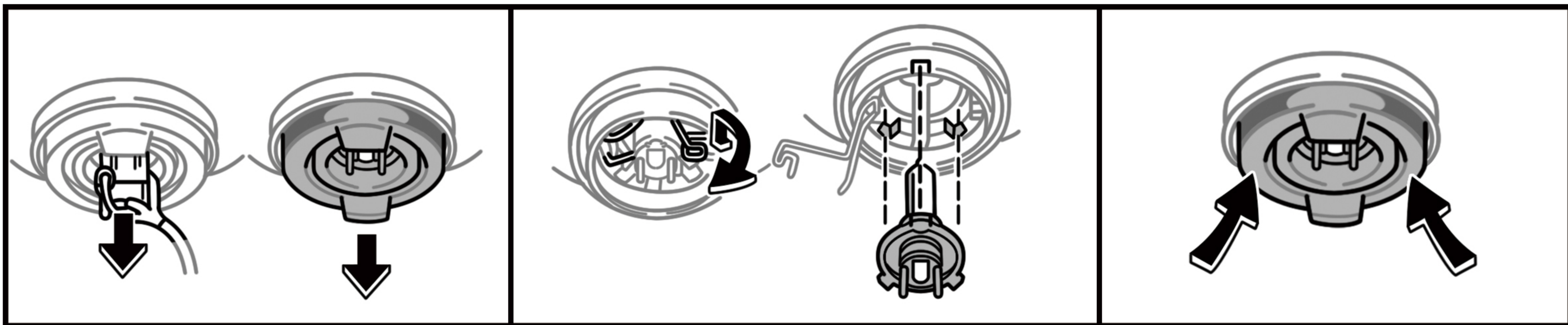
1. Using a screwdriver, push the clips downward.
2. Pull the grille forward to remove the grille.

STEP 3



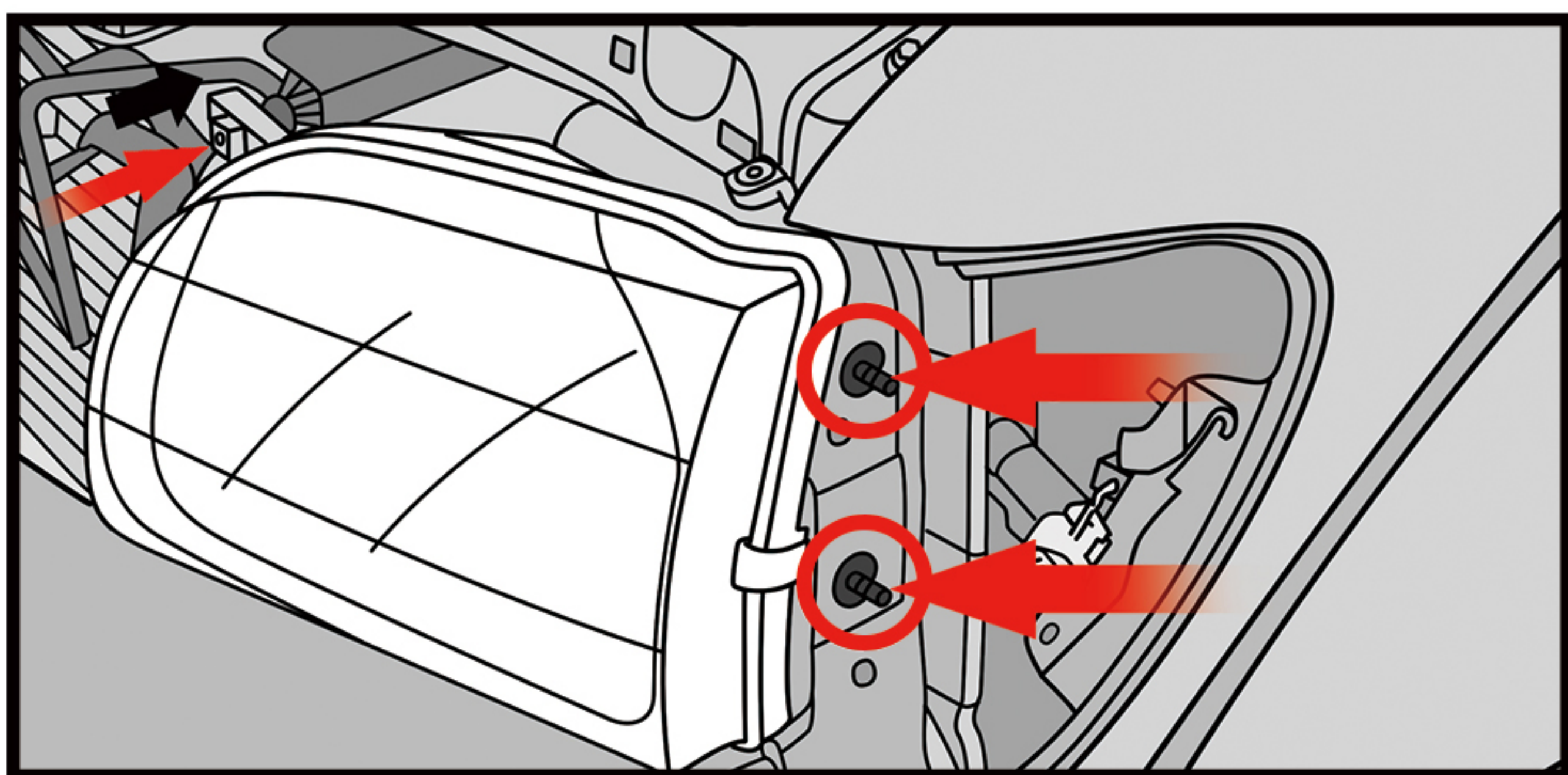
1. Remove (1) M6 hex bolt and (2) M6 hex nuts securing the headlight assembly.
2. Pull the headlight assembly forward and disconnect wire harness.
3. Repeat to remove the other side headlight assembly.
4. Remove the rubber cover behind the headlight bulb.
5. Release the bulb retaining spring and remove the headlight bulb.

STEP 4



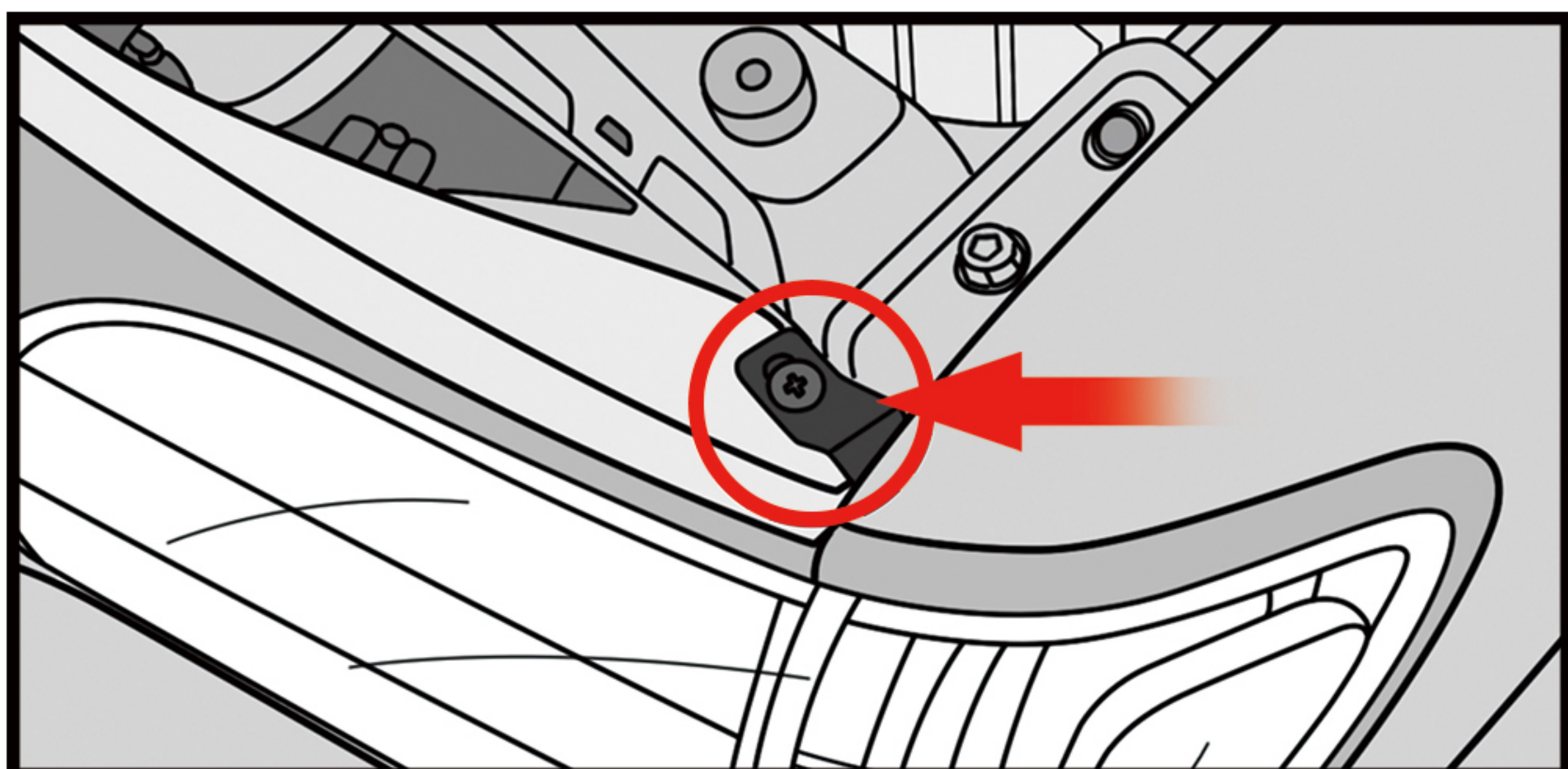
1. Remove the rubber cover on the new headlight assembly housing.
2. Release the bulb retaining spring and insert the headlight bulb.
3. Secure the headlight bulb by the retaining spring and install the rubber cover.
4. Insert the signal light socket into the new corner light assembly and twist clockwise to secure.

STEP 5



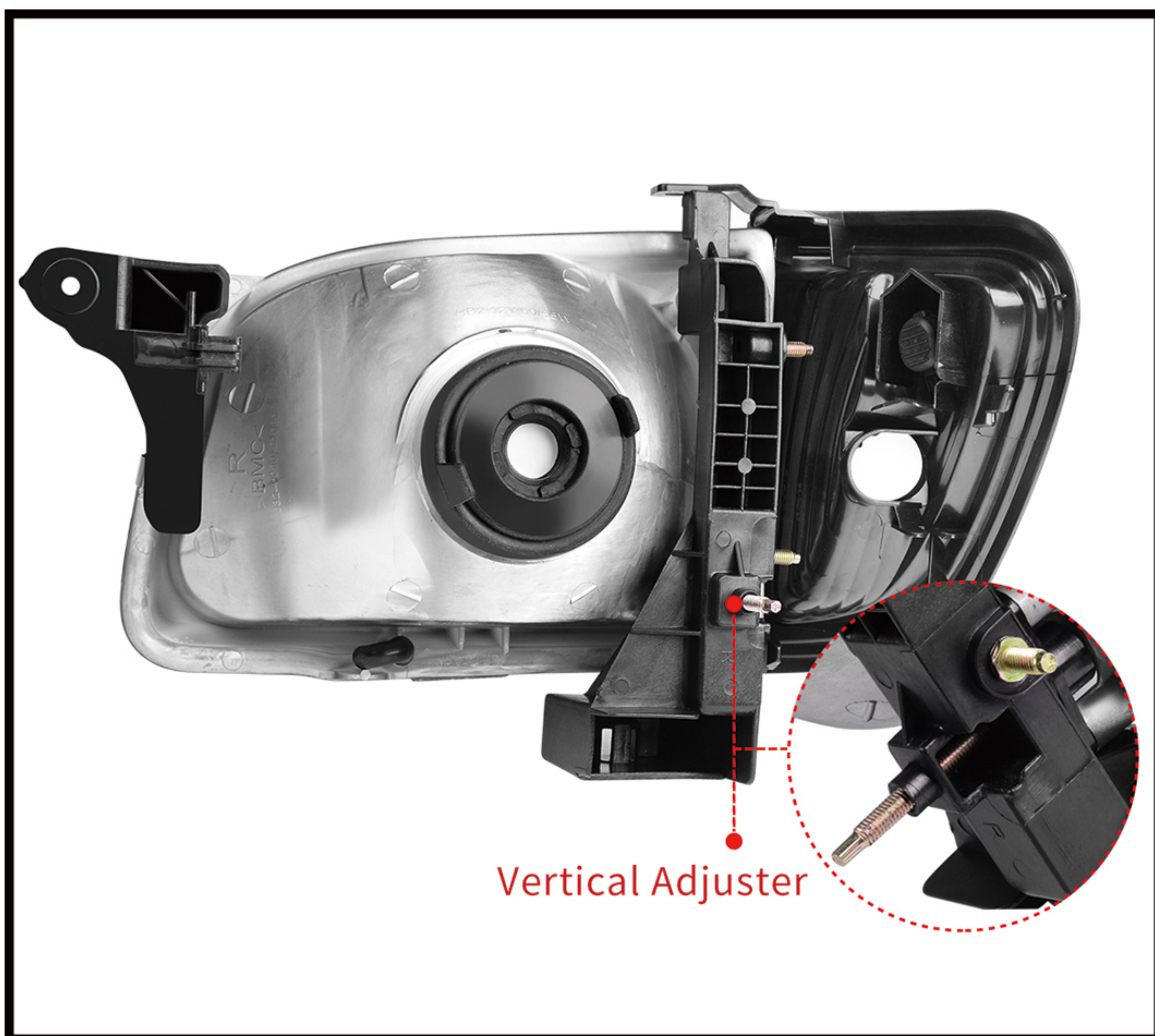
1. Place the headlight assembly on vehicle, connect wire harness.
2. Guiding the headlight assembly into mounting position.
3. Secure the headlight assembly by (1) M6 hex bolt and (2) M6 hex nuts.
4. Repeat to install the other side headlight assembly.

STEP 6



1. After both side headlight assembly installed, attach the grille to the radiator support bracket and engage all clips.
2. Place the corner light assembly on vehicle, connect wire harness.
3. Slide the corner light assembly into mounting position.
4. Secure the corner light assembly by the Philips screw.
5. Repeat to install the other side corner light assembly.

WARM TIPS



Before you begin to adjust the light, make sure check the alignment of your lights first. Park the vehicle about 10 to 25 feet from the wall with the lights aimed at the wall. The centerlines of the headlights should not be any higher than 3.5 feet above the ground.

1. Find the adjustment screws.
2. Adjust the headlights individually.
3. Adjust the vertical field.
4. Test your results.