

### Tools Required

|                   |
|-------------------|
| 16mm, 19mm Socket |
| 13mm Wrench       |
| Ratchet           |
| Torque Wrench     |



## Before Installation:

Read this instruction carefully before starting installation.

Proper tools will improve the quality of installation and reduce the time required.

If missing parts or any damage found, please take a picture, and contact us.

**Professional installation would be highly recommended.**

Periodic check to ensure all mounting hardware remains secure and tight.

**For more towing and off-road recovery information, please check the vehicle owner's manual.**

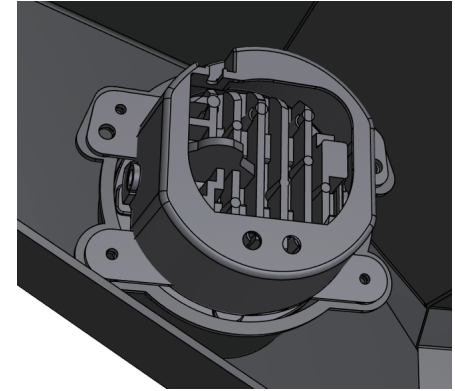
## Step 1:

1. Remove (4) rivets holding the splash guard and remove the splash guard.
2. Remove (2) rivets securing the frame cover between the grille and front bumper.
3. Disconnect fog lamp connectors.
4. Remove (8) M12 hex nuts holding the bumper onto the frame rail.
5. Carefully remove the front bumper.

## Step 2:

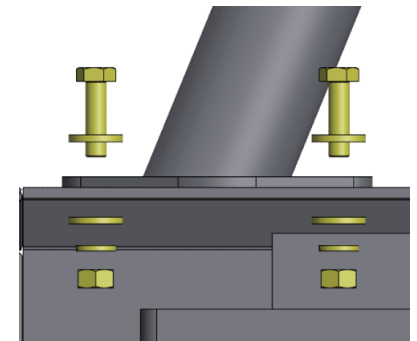
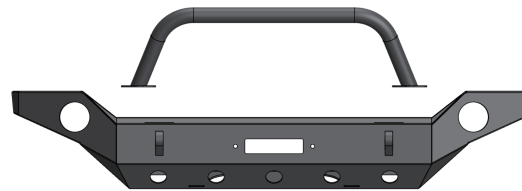
1. Install the factory fog lamps to the new bumper using factory hardware.

Note: Some vehicle require self re-welding the factory fog lamp harness.



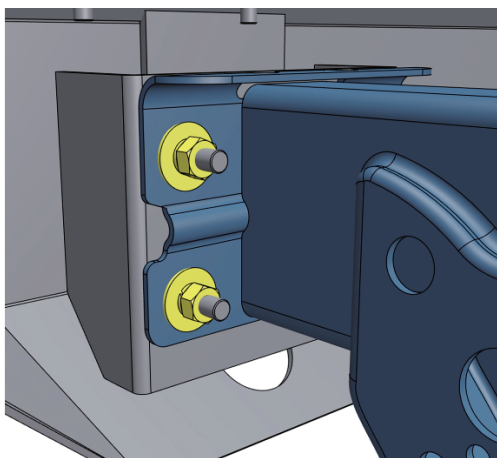
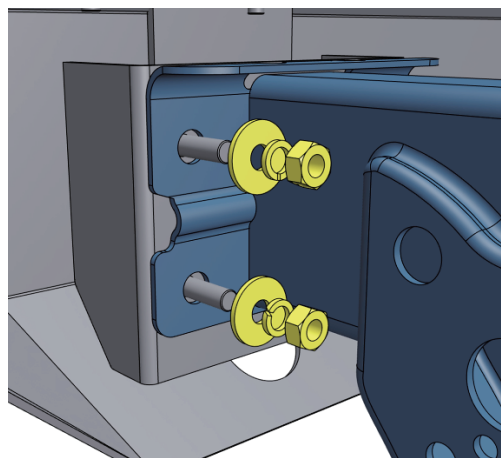
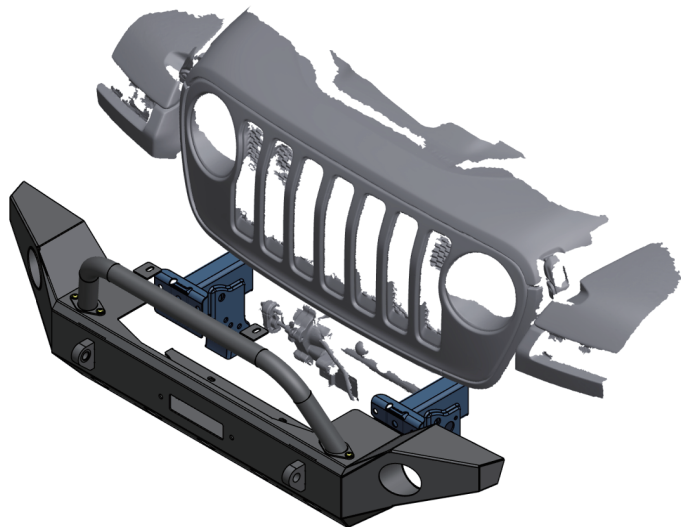
## Step 3:

1. Position the bull bar to the new front bumper.
2. Secure bull bar using (6) M8 hex bolts, (12) M8 flat washers, (6) M8 lock washers, (6) M8 hex nuts.
3. Tighten M8 hardware with 15 ft. lbs. torque.



## Step 4:

1. With assistance, place the bumper onto frame rail.
2. Secure the bumper to frame rail with (2) M10 hex bolts, (8) M10 flat washers, (8) M10 lock washers, (6) M10 hex nuts.
3. Tighten M10 hardware with 31 ft. lbs. torque.

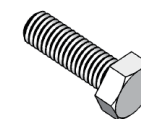


## Step 5:

1. Install (2) D-rings on shackle mounting brackets.
2. After bumper installed, periodic check to ensure all mounting hardware remains secure and tight.

## Part List:

|   | Qty. | Description        |
|---|------|--------------------|
| ① | ×6   | M8×20 Hexagon Bolt |
| ② | ×12  | M8×22 Flat Washer  |
| ③ | ×6   | M8 Lock Washer     |
| ④ | ×6   | M8 Hexagon Nut     |
| ⑤ | ×8   | M10×30 Flat Washer |
| ⑥ | ×8   | M10 Lock Washer    |
| ⑦ | ×8   | M10 Hexagon Nut    |
| ⑧ | ×2   | D-Ring Shackle     |
| ⑨ | ×1   | Bull Bar           |



①



②



③



④



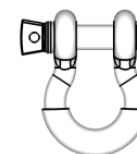
⑤



⑥



⑦



⑧



⑨