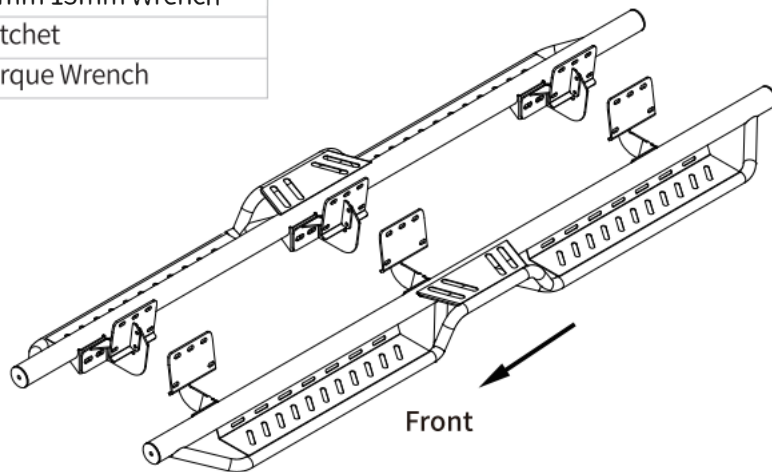


### Tools Required

16mm 13mm Socket
16mm 13mm Wrench
Ratchet
Torque Wrench



## Before Installation:

Read this instruction carefully before starting installation.  
Proper tools will improve the quality of installation and reduce the time required.

**Remove the paint buildup on the factory threaded studs.**

If missing parts or any damage found, please take a picture and contact us.

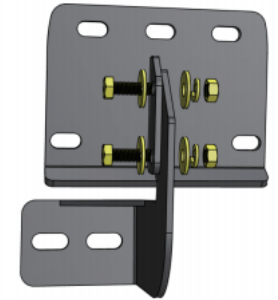
**Professional installation would be highly recommended.**

## Step 1:

1. Locate (3) mounting positions each side.
2. Remove the paint buildup on the factory threaded studs.
3. Clean the sealant and dirt around mounting positions.

## Step 2:

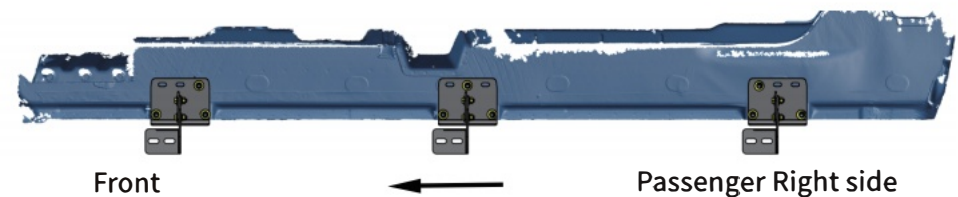
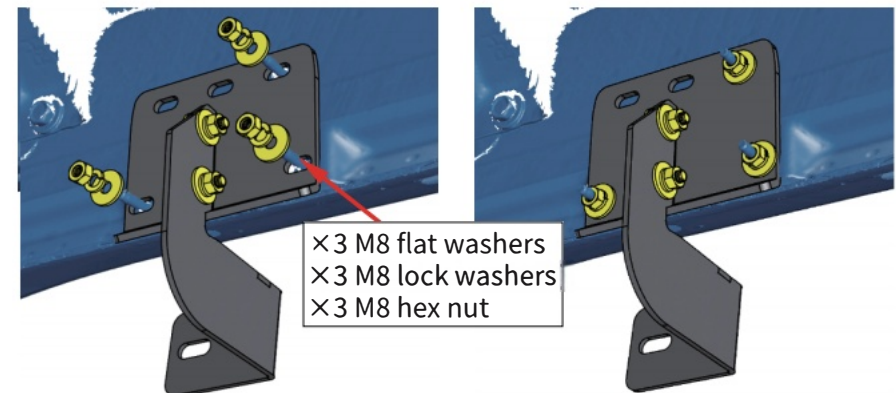
1. Attach support arm to the bracket base and secure with (2) M8 hex bolts, (4) M8 flat washers, (2) M8 lock washers, (2) M8 hex nuts.
2. Repeat to assemble all brackets.



Passenger Side Bracket

## Step 3:

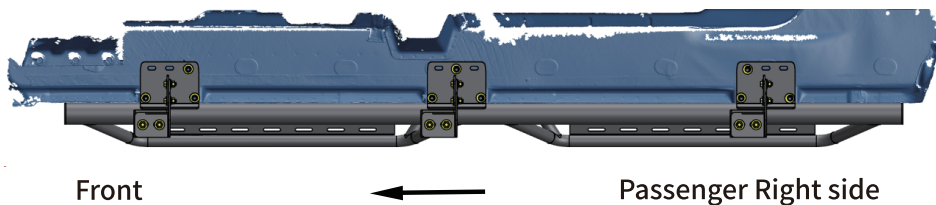
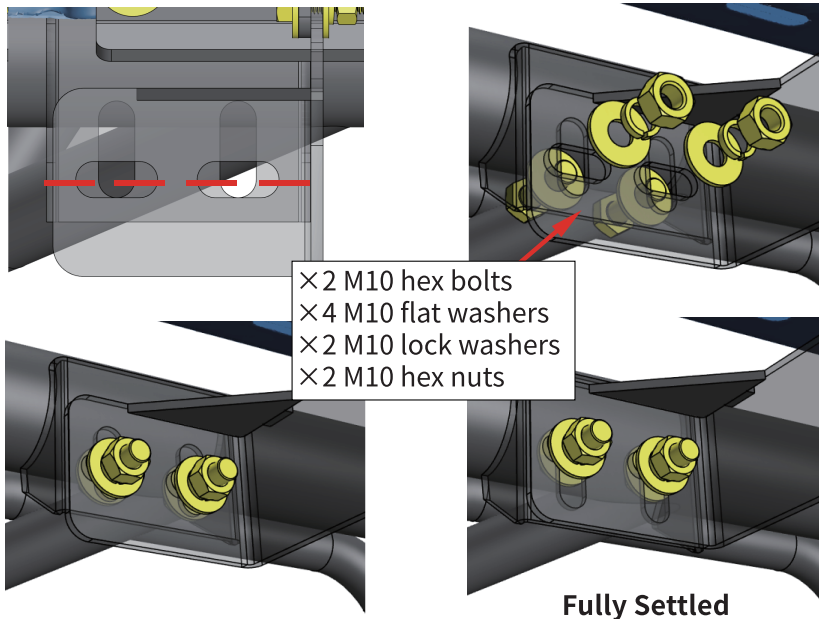
1. Attach bracket to the inner rocker panel, feed the factory studs through the holes on mounting bracket.
2. Secure the mounting bracket with (3) M8 flat washers, (3) M8 lock washers, (3) M8 hex nuts.
3. Repeat to install all brackets. Do not fully tighten.



## Step 4:

1. With assistance, lift and attach the step bar to brackets. Align bottom edges of the step bar mounting holes with the bracket mounting holes.
2. Secure the step bar on brackets using (6) M10 hex bolts, (12) M10 flat washers, (6) M10 lock washers, (6) M10 hex nuts.
2. Repeat to install the other side step bar.

**Note:** Insert the M10 bolts from the step bar side. Tighten the M10 hardware after the step bar is fully settled.



## Step 5:

1. Tighten M8 hex bolts and nuts with 15 ft. lbs. torque.
2. Tighten M10 hex bolts and nuts with 31 ft. lbs. torque.
3. After the step bar installed, periodic check to ensure all mounting hardware remains secure and tight.

## Part List:

	Qty.	Description
①	×6	Bracket Mounting Base
②	×3	Driver Side Support Arm
③	×3	Passenger Side Support Arm
④	×12	M10×30 Hexagon Bolt
⑤	×12	M8×25 Hexagon Bolt
⑥	×24	M10×25 Flat Washer
⑦	×42	M8×24 Flat Washer
⑧	×12	M10 Lock Washer
⑨	×30	M8 Lock Washer
⑩	×12	M10 Hexagon Nut
⑪	×30	M8 Hexagon Nut

