

## Before Installation:

Read this instruction carefully before starting installation.

The 09-12 models require self-drilling on pinch weld to install brackets. Proper tools will improve the quality of installation and reduce the time required.

If missing parts or any damage found, please take a picture and contact us.

**Professional installation would be highly recommended.**

Periodic check to ensure all mounting hardware remains secure and tight.

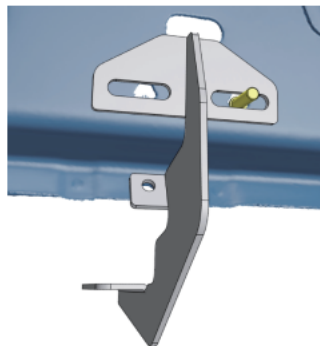
## Step 1:

1. Locate (3) mounting positions each side.
2. Remove the factory tape and clean the sealant and dirt around factory holes on mounting positions.
3. Clean the factory threaded holes if equipped.

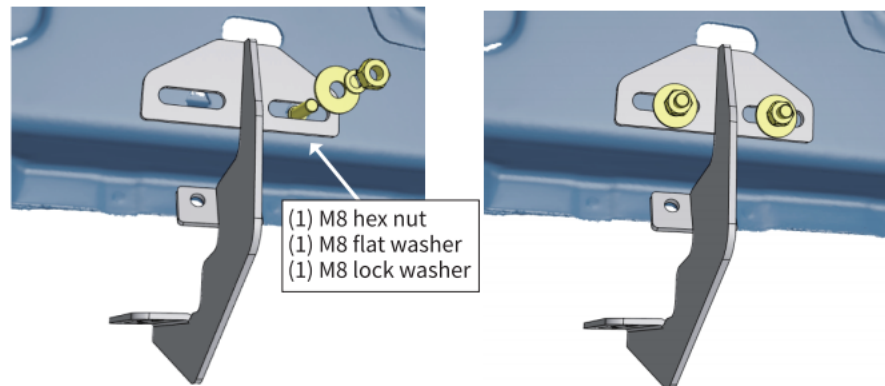
## Step 2A:

**For models w/o factory thread inserts**

1. Attach the bracket to the inner rocker panel and align the upper and lower mounting holes.
2. Take the thread of the M8 bolt plate, insert the flat side into the hexagon holes on the inner rocker panel.



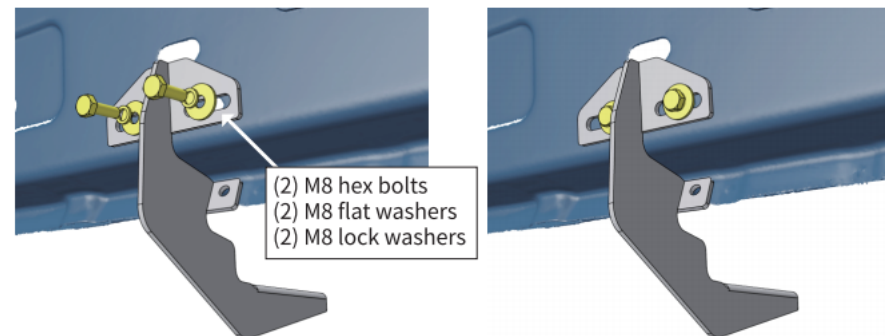
3. Hold the bolt plate and secure the bracket with (1) M8 flat washer, (1) M8 lock washer, (1) M8 hex nut.
4. Insert another M8 bolt plate to the other hexagon hole and secure the bracket with (1) M8 flat washer, (1) M8 lock washer, (1) M8 hex nut.



## Step 2B:

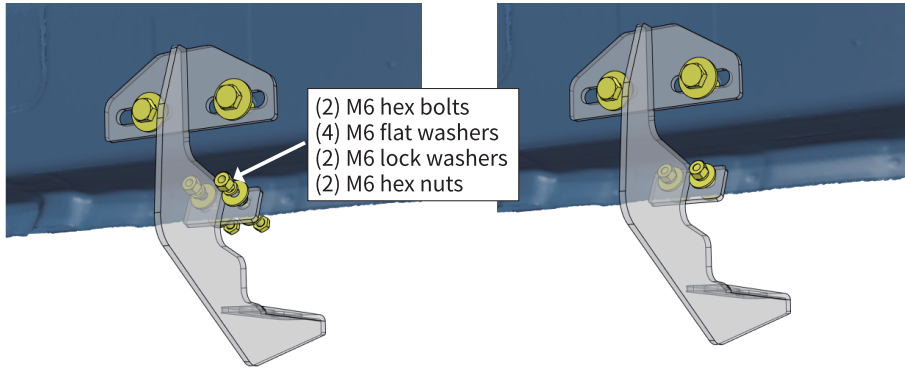
**For models w/ factory thread inserts**

1. For the front and rear mounting positions, attach the bracket to the inner rocker panel.
2. Secure the bracket on rocker panel with (2) M8 hex bolts, (2) M8 flat washers, (2) M8 lock washers.
3. Refer the step 2A to install the center bracket.



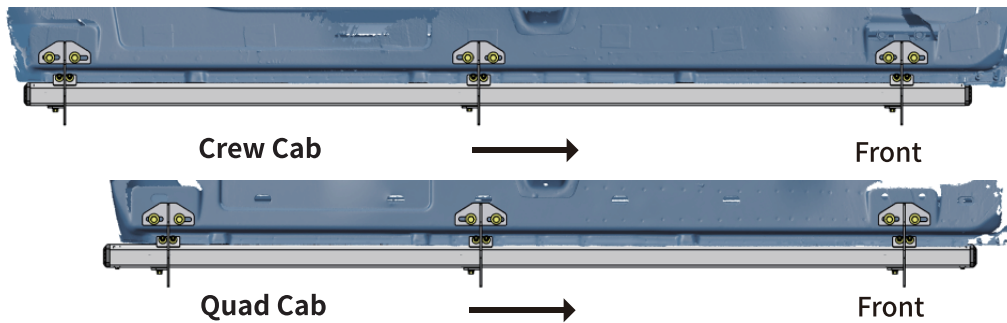
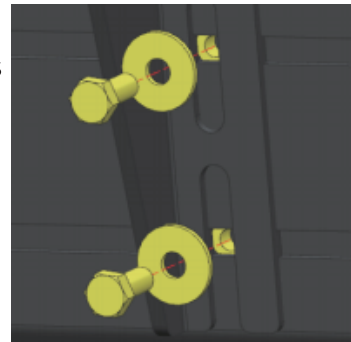
### Step 3:

1. Slide the bracket to line up with the mounting holes on pinch weld.
2. Secure the bracket to pinch weld with (2) M6 hex bolts, (4) M6 flat washers, (2) M6 lock washers, (2) M6 hex nuts.



### Step 4:

1. Remove (6) M8 hex bolts and (6) M8 flat washers underneath the step bar.
2. Slide mounting track to proper positions.
3. With assistance, take the step bar to brackets. Secure the step bar on brackets with (6) M8 hex bolts and (6) M8 flat washers.
4. Repeat to install the other side step bar.



### Step 5:

1. Tighten M8 hex bolts and nuts to 15 ft. lbs. torque.
2. Tighten M6 hex bolts and nuts to 6 ft. lbs. torque.
3. Repeat above steps on the passenger side.

### Part List:

	Qty.	Description
①	× 6	Mounting Bracket
②	× 12	M8 Bolt Plate
③	× 12	M8 × 25 Hexagon Bolt
④	× 12	M6 × 25 Hexagon Bolt
⑤	× 12	M8 × 24 Flat Washer
⑥	× 24	M6 × 18 Flat Washer
⑦	× 12	M8 Lock Washer
⑧	× 12	M6 Lock Washer
⑨	× 12	M8 Hexagon Nut
⑩	× 12	M6 Hexagon Nut
Pre-Install on Step Bar		
⑪	× 12	M8 Hexagon Bolt
⑫	× 12	M8 Flat Washer

