

## Before Installation:

Read this instruction carefully before starting installation.

Proper tools will improve the quality of installation and reduce the time required.

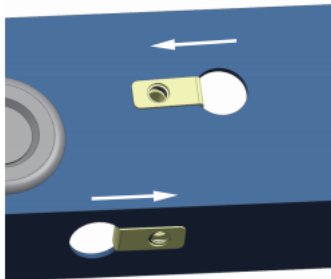
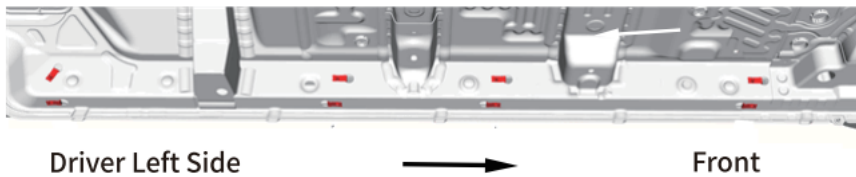
If missing parts or any damage found, please take a picture and contact us.

**Professional installation would be highly recommended.**

Periodic check to ensure all mounting hardware remains secure and tight.

## Step 1:

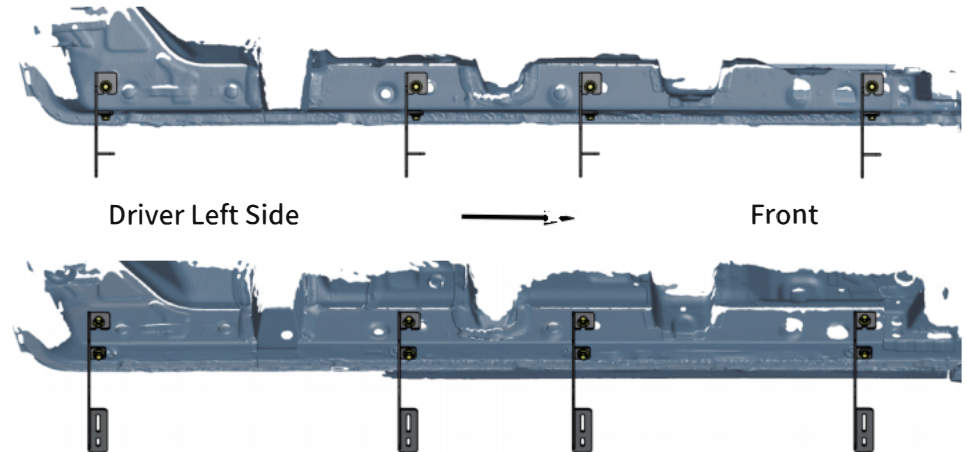
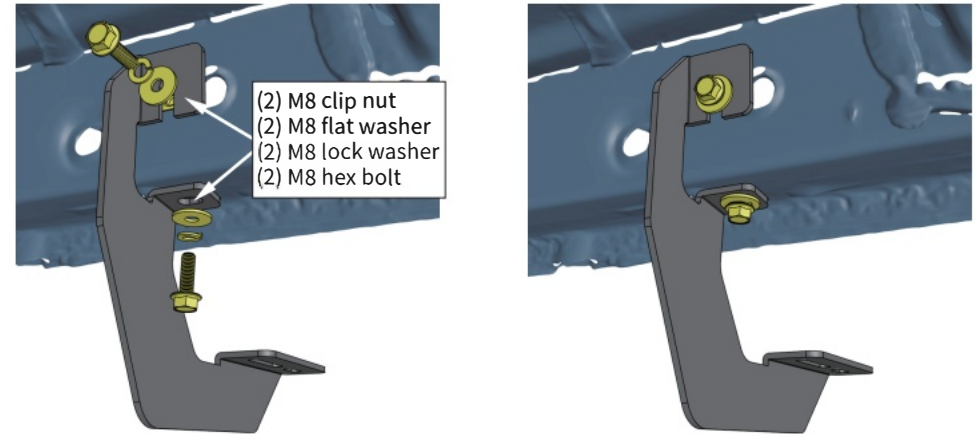
1. Locate (4) mounting positions each side.
2. Remove rubber plugs on inner rocker panel.
3. Insert clip nuts onto existing holes in the inner rocker panel.



Insert M8 clip nut onto the large hole and over the smaller hole next to it, with threads inside of the inner rocker panel.

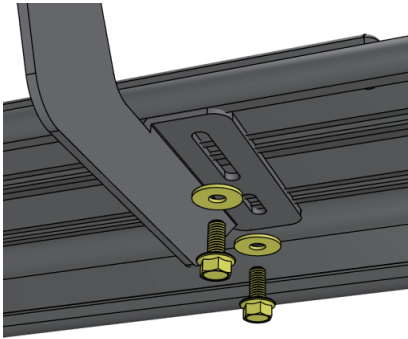
## Step 2:

1. Attach bracket to inner rocker panel.
2. Secure the bracket to inner rocker panel using (2) M8 hex bolts, (2) M8 flat washers, (2) M8 lock washers.
3. Repeat to install other brackets. Do not fully tighten.

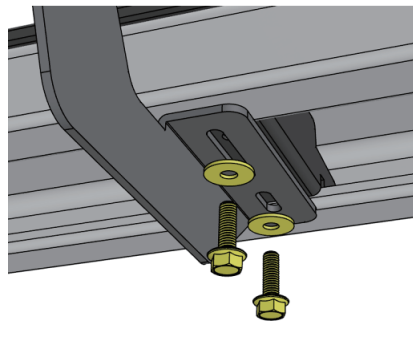


## Step 3:

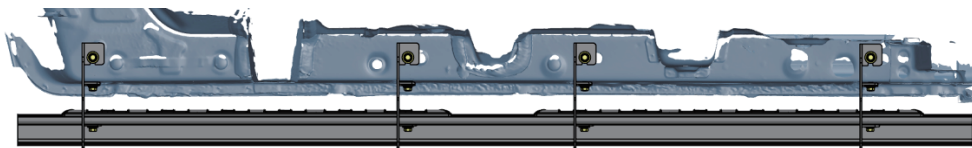
1. Remove (8) M8 hex bolts and (8) M8 flat washer from the step bar.
2. Slide mounting tracks to proper positions.
3. With assistance, lift and attach the step bar to brackets.  
Secure the step bar on brackets with (8) M8 hex bolts and (8) M8 flat washers.
4. Repeat to install the other side step bar, do not fully tighten.



Aluminum Alloy Step Bar



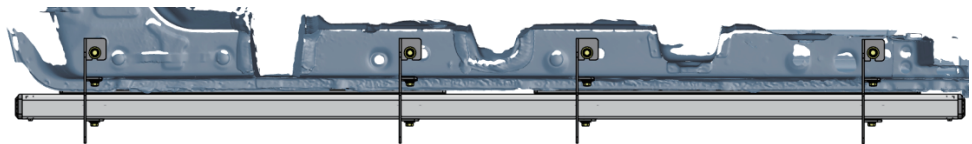
Stainless Steel Step Bar



Driver Left Side



Front

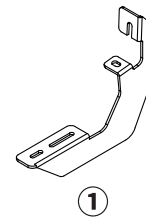


## Step 4:

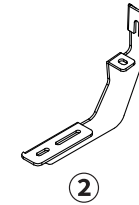
1. Tighten M8 hex bolts on vehicle with 15 ft-lbs. torque.
2. Adjust the step bar to level and tighten M8 hex bolts with 15 ft-lbs. torque.
3. After the step bar installed, periodic check to ensure all mounting hardware remains secure and tight.

## Part List:

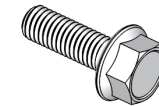
	Qty.	Description
①	×4	Driver Side Bracket
②	×4	Passenger Side Bracket
③	×16	M8 Hexagon Flange Bolt
④	×16	M8 Flat Washer
⑤	×16	M8 Lock Washer
⑥	×16	M8 Clip Nut
Pre-Install on Step Bar		
⑦	×16	M8 Hexagon Flange Bolt
⑧	×16	M8 Flat Washer



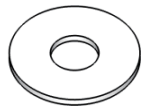
①



②



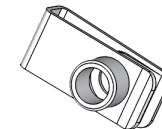
③



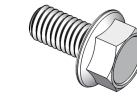
④



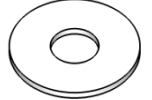
⑤



⑥



⑦



⑧