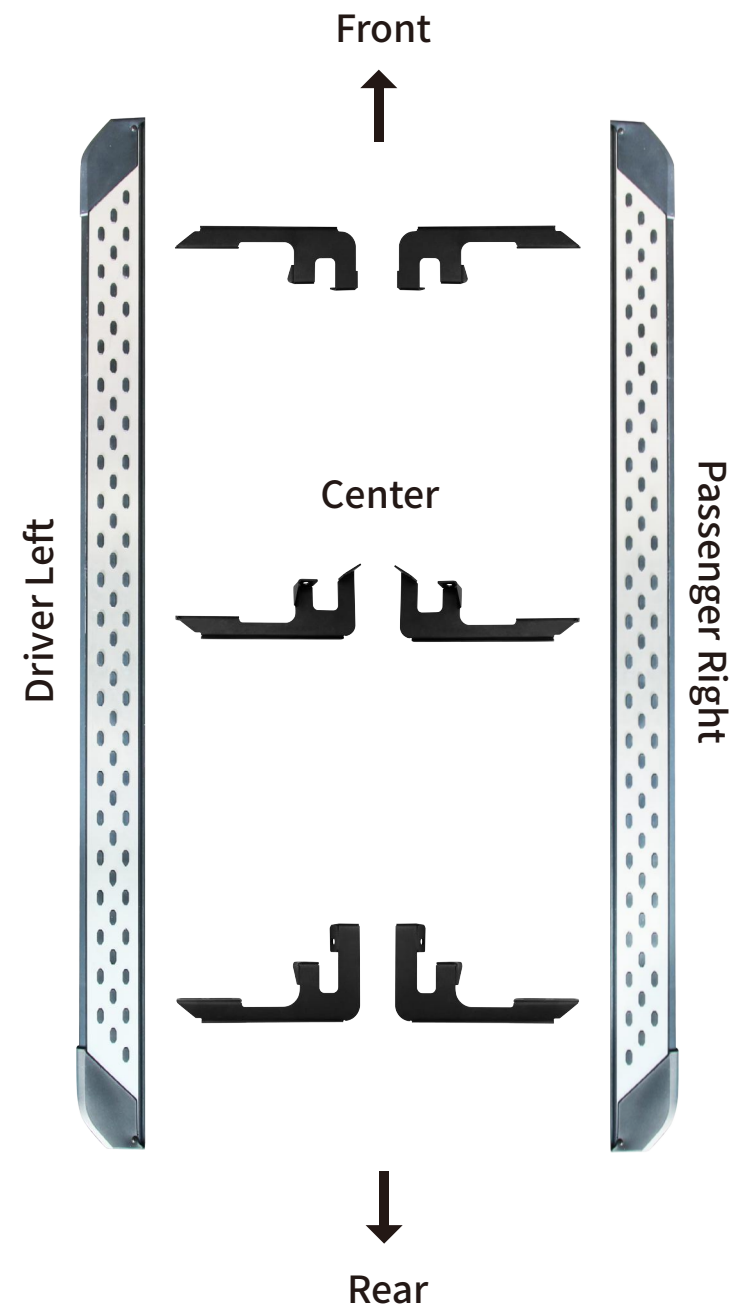


Tools Required	
13mm Socket	
Ratchet	
Torque Wrench	

Part List	
2	Step Bar
2	Front Bracket (Flat)
2	Center Bracket (Angle)
2	Rear Bracket (Tall)
12	M8*25 Hexagon Bolt
12	M8*15 Hexagon Bolt (Behind Step Bar)
12	M8*22 Flat Washer
12	M8 Spring Washer



Notes

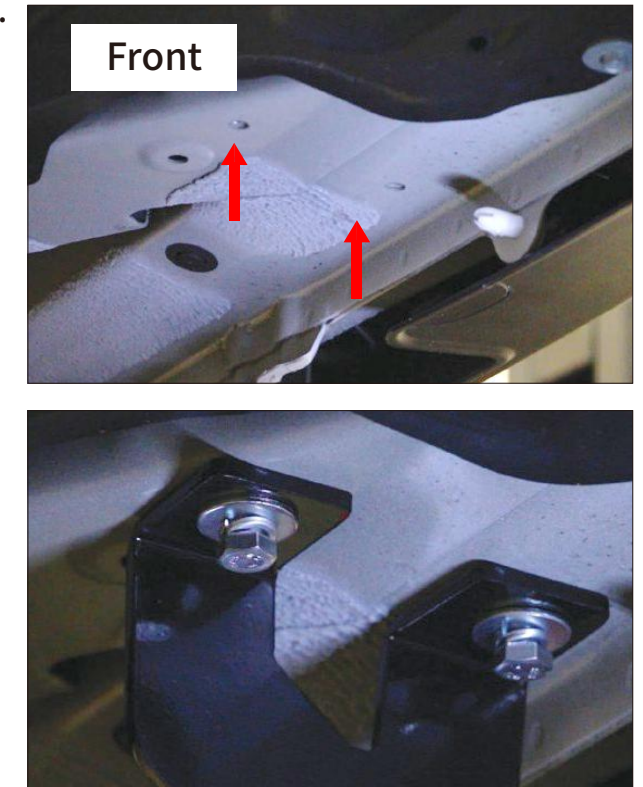
- Read this instruction carefully before starting installation.
- Verify all parts especially the direction of brackets before installation.
- If missing parts or any damage found, please take a picture, and contact us.

Step 1:

- Locate three mounting positions each side.
- Clean the sealant and dirt around factory threaded holes on mounting positions.

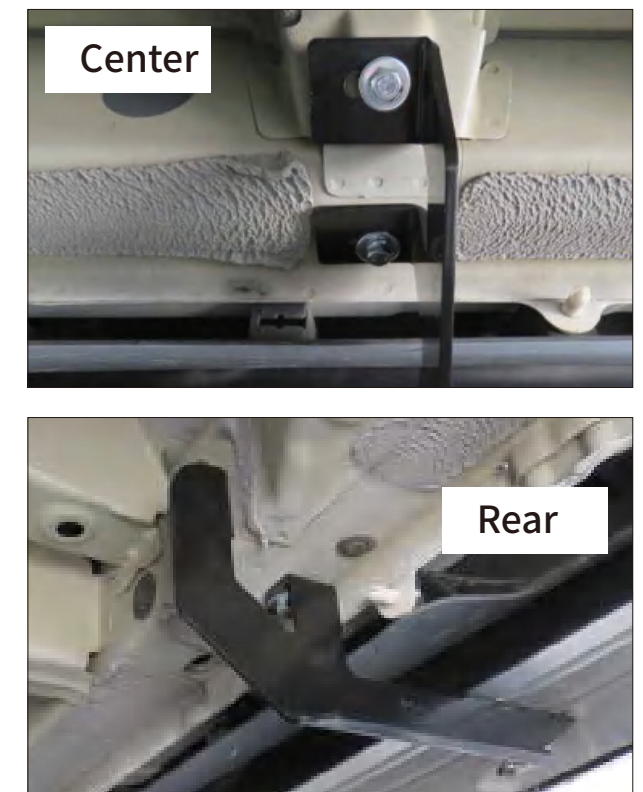
Step 2:

- Locate factory threaded holes on front mounting position.
- Attach bracket secure with (2) M8 hex bolts, (2) M8 flat washers, (2) M8 spring washers.
- Do not fully tighten.
- Passenger side as example.



Step 3:

- Repeat step 2 to install center and rear brackets.
- Do not fully tighten.
- Passenger side as example.

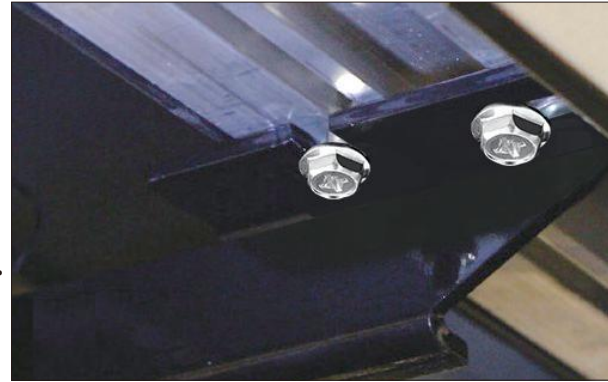


Step 4:

Remove (6) M8*15 hex bolts from mounting rails on step bar.

Place the step bar on mounting brackets and slide the block in mounting rails to proper positions.

Secure the step bar on brackets with (6) M8*15 hex bolts.
Do not fully tighten.



Step 5:

Repeat above steps on the other side.

Tighten the M8 bolts on vehicle with 20 ft. lbs.

Push the step bar inside to mount the step bar tight against the rocker panel.

Tighten the M8 bolts on step bar with 20 ft. lbs.

Periodic check to ensure all mounting hardware were remain secure and tight.

