

FEATURE

High quality injection molding fender flares

Made from light weight impact resistance Polypropylene, non-cracking, non-warping, 100% UV-resistant.

Factory holes -

some models may require drilling

Injection molded smooth(Not Textured) matt black finish for paintable

Professional installation is always recommended

Step 1 Before Installation

**A.Fit:** Fit of the flare to vehicle should be confirmed. Some fling, sanding, or cutting may be adopted for proper fit if necessary.

**B.Painting:** (optional) if paint is desired it must be done prior of installing flares on vehicle. Clean outer surface with a good grade degreaser.

**C.Metal protection:** Rust resistance paint of all exposed fasteners and bare metal should be done BEFORE installing flares. Undercoating the inner fender wells should be done AFTER flare attachments have been completed.

**D.Flare**s may interfere with existing decals on vehicle. If you wish. Remove decals prior to installation of flares.

For Tacoma 2012-2015  
Fender Flares  
Set of 4

TOOLS FOR EASY INSTALLATION:

- Utility Knife
- Electric Drill
- 1/4" Drill Bit
- Vise Grips
- Trim Tool or Flat Head Screwdriver
- Socket Wrench
- 10mm Socket
- 8mm Socket
- 3/8" Wrench
- 7/16" Wrench
- #2 Phillips Bit
- Grease Pencil

Hardware Kit Continued:

15.

SW1-0067,  
5/16 x 18 x 3/8"  
SS Torx Screw,  
38 pcs

16.

WA1-0012,  
.320 x .700 x .03  
SS Washer,  
42 pcs

17.

NU1-0019,  
5/16-18 Jam Fin.  
Nylock Nut,  
42 pcs

18.

ET1-0002,  
Edge Trim Tool,  
1 pc

19.

GP1-0008,  
Duro (NC02/S 70)  
Edge Trim,  
360 inches

Flare Pocket Hardware Installation:

NOTE: Pocket hardware for the Front Bumper Piece is covered later in this instruction set.

1

Put a Washer (WA1-0012) on each Bolt (SW1-0059).

2

FRONT MAIN & REAR FLARE ONLY: Put each Bolt/Washer combination through a pocket hole in the flare, Bolt head and Washer on the outside.

3

FRONT MAIN & REAR FLARE ONLY: Place a Nut (NU1-0019) over the end of each Bolt and tighten, using a 1/2" wrench for the Nut and the supplied Torx Bit (SW1-0052) for the Bolt. Repeat for remaining pockets.

Included in Hardware Kit:

1.

CL1-0005,  
Dacromet "U"  
Spring Clip,  
4 pcs

2.

SW1-0050,  
10 x 5/16 Phillips  
Truss Screw,  
4 pcs

3.

MT1-0002,  
1" x 1" x .017"  
Black Tab,  
4 pcs

4.

SP1-0005,  
1/2" x .257" x 1"  
Nylon Spacer,  
2 pcs

5.

SP1-0008,  
1/2" x .260" x 3/4"  
Spacer,  
2 pcs

6.

SP1-0003,  
1/2" x .260" x 1/4"  
Nylon Spacer,  
2 pcs

7.

NU1-0011,  
1/4-20 SS Serrated  
Flange Nut,  
4 pcs

8.

SW1-0005,  
1/4-20 x 3/4"  
HxHd Slot Screw,  
4 pcs

9.

SW1-0034,  
14 x 1-3/4" Phillips  
Truss Tap Screw,  
4 pcs

10.

SW1-0036,  
M6-.3 x 20mm Hex  
Magni Black Screw,  
26 pcs

11.

SW1-0041,  
5/16 x 18 x 1"  
SS Torx Screw,  
4 pcs

12.

WA1-0015,  
5/16 x 1" SS  
Fender Washer,  
4 pcs

13.

WA1-0005,  
5/16" SAE Zinc  
Flat Washer,  
4 pcs

14.

SW1-0052,  
T-45 Torx Bit,  
1 pc

Front Flare & Bumper Piece Installation Procedures:

(Driver's Side, No Aftermarket Bumper)

4

Remove three factory screws from the mud flap. Save screws for reinstallation.

5

Remove four factory screws from the fender lip. Save screws for reinstallation. Remove fl are by pulling part away from side of vehicle.

6

Using a clockwise twisting motion, remove eight factory plastic clips from fender. See step 8.

7

Remove one clip from front using vise grips, pulling with a rocking motion. See step 8.

8

Clip locations.

9

Remove two factory screws underneath the front bumper cover.

10

Remove plastic screw located at front of wheel well by turning clockwise 1/2 turn with a fl at head screwdriver and prying out.

11

Pull down bumper cover and splash shield.  
NOTE: Do not re-fasten splash shield until fi nal step.

12

Using a fl at head screwdriver, with a pressing motion, remove seven plastic clips located inside of bumper cover. Remove front bumper extension.

13

Slide a supplied Washer (WA1-0005) onto a supplied Hexhead Slot Screw (SW1-0005).

14

Insert the Screw/Washer assembly through the hole drilled in the end of the Front Main Flare and into the corresponding hole in the Front Bumper Piece. Two places.

15

Install a supplied Nut (NU1-0011) on ends of screws and tighten

STEP 16 - EDGE TRIM INSTALLATION

A. Peel two to three inches of red vinyl backing away from Edge Trim (GP1-0005) tape. Applying the adhesive side of the edge trim to the inner side of the fl are, affi x the edge trim to the top edge of the fl are (the portion that comes in contact with the vehicle).

B. Press edge trim into place along the top edge of the fl are in one-foot increments, pulling red vinyl backing free as you continue to work your way around the top edge of the fl are.

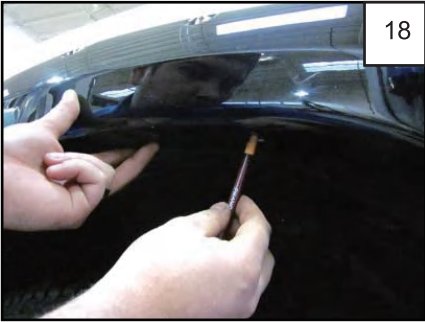
C. Apply Edge Trim to Front Bumper Piece if installing.







Hold the fl are fi rmly on the fender. Make sure to line up the fl are and bumper piece along the style line to ensure correct installation.



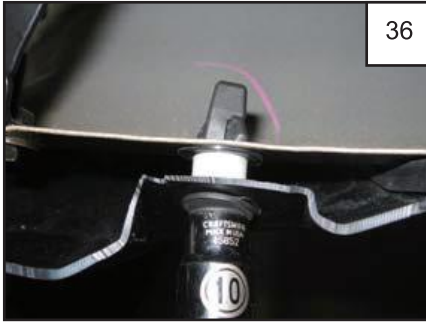
Hold the fl are fi rmly on the fender. Using a grease pencil, mark two clip locations using existing holes in fl are. See step 19



Clip locations



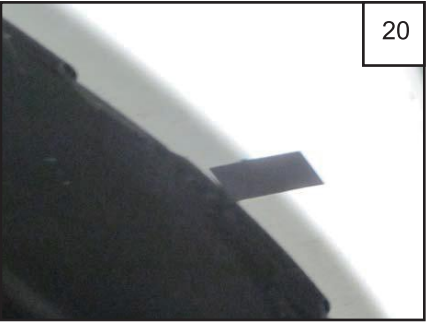
Tighten all screws. Completed Front Flare installation



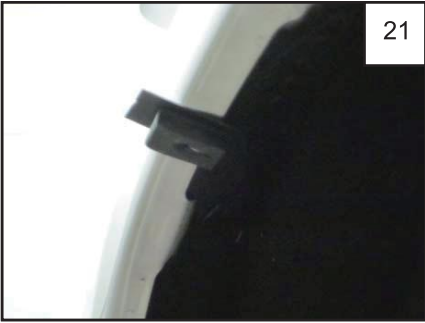
At bottom front of fl are, install a supplied Screw (SW1-0036) and a Spacer (SP1-0003).



At bottom rear of fl are, install a supplied Screw (SW1-0034) and a Spacer (SP1-0008).



Remove fl are from fender. Stick a supplied 1" Black Tab (MT1-0002) over marks made in step 18.



Place a supplied Spring Clip (CL1-0005) over each Tab.



Reposition fl are on fender and install three 20mm hex screws (SW1-0036) through holes in fl are and into factory holes

## Rear Flare Installation Procedures (Driver's Side):



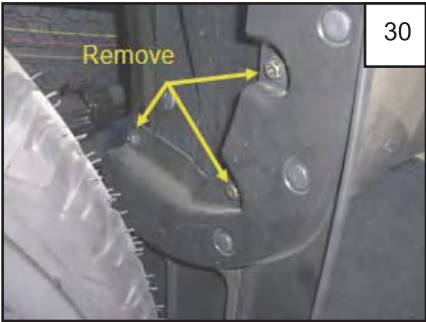
Install a supplied Phillips Truss Screw (SW1-0050) through holes in fl are and into Clips installed in Step 21



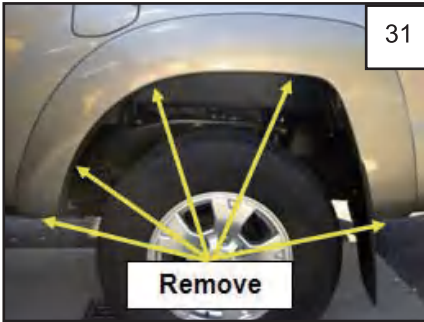
Drill through holes in bumper piece and into sheet metal with a 5/16" drill bit



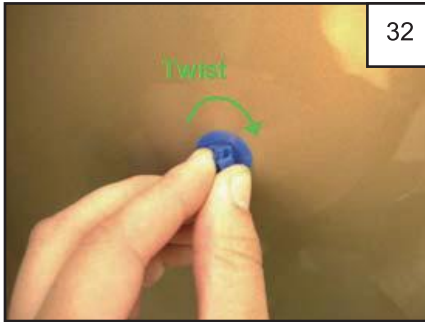
Make sure bumper piece is aligned with the style line. Install supplied 20mm hex screw (SW1-0036) into factory hole on front bumper and tighten.



Remove three factory screws from mud fl ap. Discard mud fl ap.

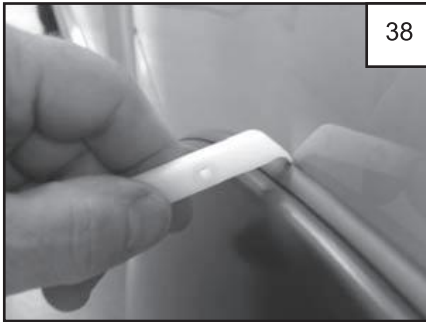


Remove fi ve factory screws. Remove fl are by pulling part away from side of vehicle.



Using a clockwise twisting motion, remove eight factory plastic clips from fender. See step 34.

## Edge Trim Tool Procedures:



Using supplied Edge Trim Tool (ET1-0002), seat edge trim against vehicle by hooking curved end under edge trim at one end of fl are. Next, slide around outer edge of fl are to the other end.



Using fl at end of supplied Edge Trim Tool (ET1-0002), seat edge trim against fl are by inserting straight end between edge trim and fl are at one end. Next, slide around entire edge to the other end.



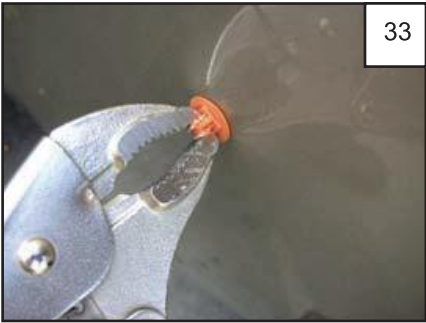
Slide a supplied .320 SS Washer (WA1-0012) onto a SS Torx Screw (SW1-0041). Situate fl are on bumper, inserting screws through holes drilled in bumper in step 24.



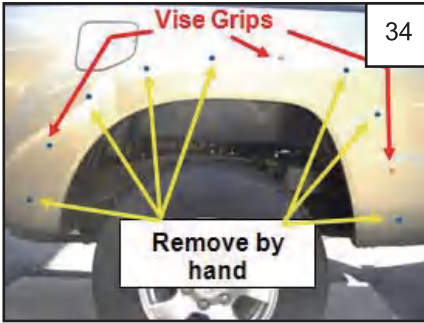
Install a supplied SS Fender Washer (WA1-0015) and supplied 5/16" Nylock Nut (NU1-0019) on back of screws installed in step 27 and tighten. (Note: Tighten from the back)



Pull down bumper cover and slide splash shield back in place. Install supplied hex screw (SW1-0036) in front of bumper cover to fasten splash shield to bumper



Remove three clips from fender using vise grips, pulling with a rocking motion. See step 34.



Clip locations.



Position fl are on fender and install eight supplied hex head screws (SW1-0036) through holes in fl are and into factory holes.