

Tools Required

13mm Socket

10mm Socket

Ratchet

Torque Wrench



Front

Notes

Read this instruction carefully before starting installation.

Proper tools will improve the quality of installation and reduce the time required.

If missing parts or any damage found, please take a picture, and contact us.

Step 1:

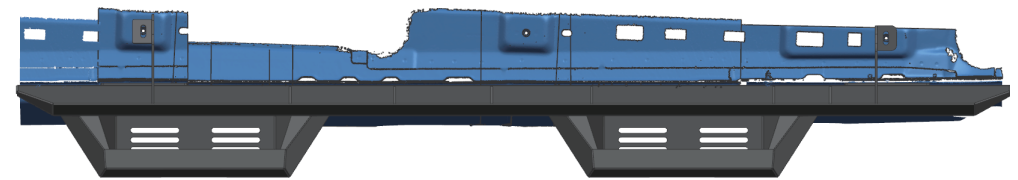
1. Remove factory rock rails if equipped. Three mounting positions each side.
2. Remove (6) M6 hex nuts on rocker panel and (3) M8 hex bolts on body frame.

Note: The step bar and factory rock rail cannot coexist.

Step 2:

1. With assistance, lift and attach the step bar to the rocker panel.
2. Align the holes on step bar with mounting holes on rocker panel.

Note: Driver left side is shown.

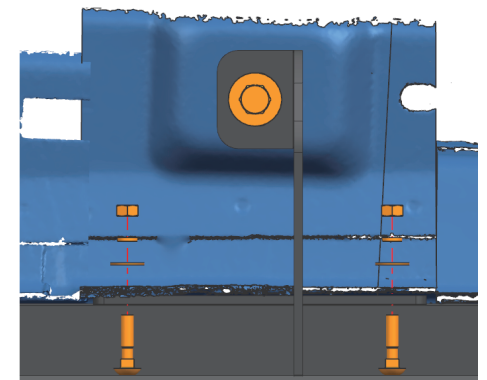
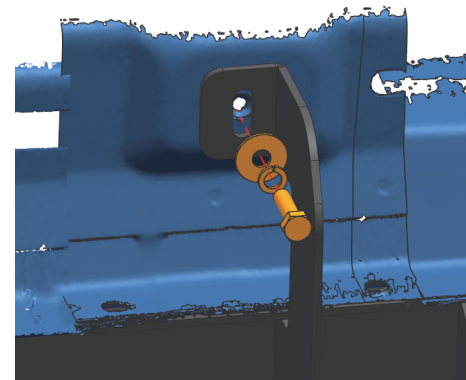


Driver Left Side

Front

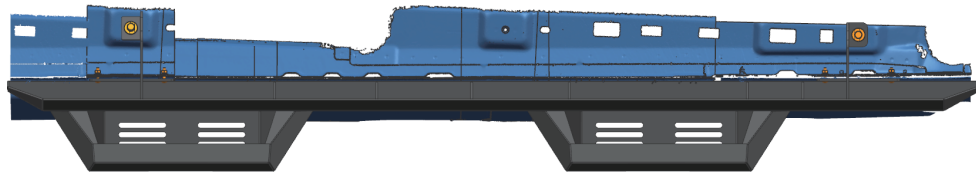
Step 3:

1. Secure the step bar on body frame with (2) M8 hex bolts, (2) M8 flat washers, (2) M8 lock washers.
2. Secure the step bar on rocker panel with (4) M6 carriage bolts, (4) M6 flat washers, (4) M6 lock washers, (4) M6 hex nuts.



Step 4:

1. Tighten M8 hex bolts with 15 ft. lbs. torque.
2. Tighten M6 hex nuts with 7 ft. lbs. torque.
3. After the step bar installed, periodic check to ensure all mounting hardware remains secure



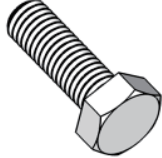






Driver Left Side



Front



Part List:

			
M8×30 Hexagon Bolt	×4	M6×25 Carriage Bolt	×8
			
M8×25 Flat Washer	×4	M6×16 Flat Washer	×8
			
M8 Lock Washer	×4	M6 Lock Washer	×8
			
M6 Hexagon Nut	×8		