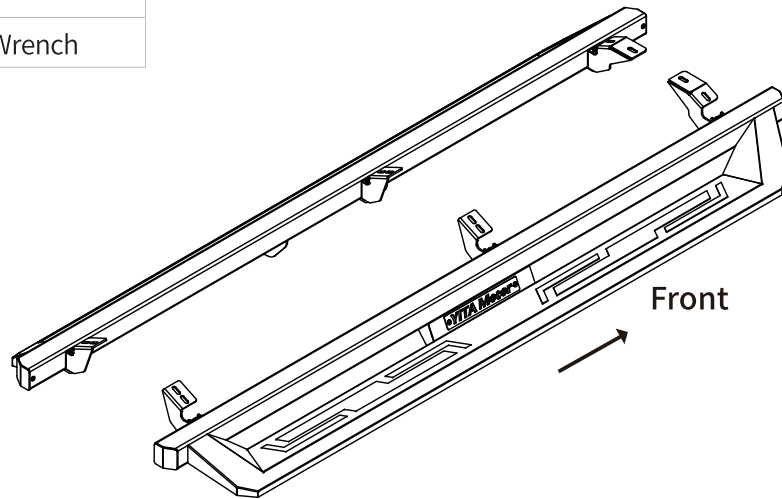


Tools Required

13mm Socket

Ratchet

Torque Wrench



Notes

Read this instruction carefully before starting installation.
Proper tools will improve the quality of installation and reduce the time required.

Verify the direction of brackets before installation.

If missing parts or any damage found, please take a picture, and contact us.

Professional installation would be highly recommended.

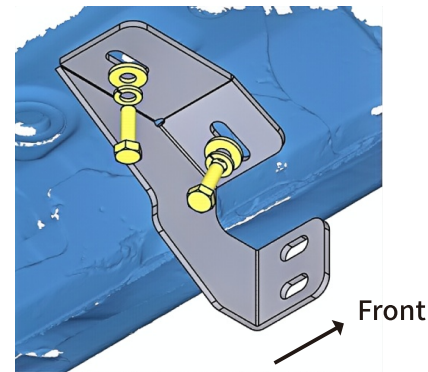
Step 1:

1. Locate (3) mounting positions on each side inner rocker panel.
2. Remove factory plugs or hex bolts from mounting positions.
3. Clean the sealant and dirt around mounting positions.

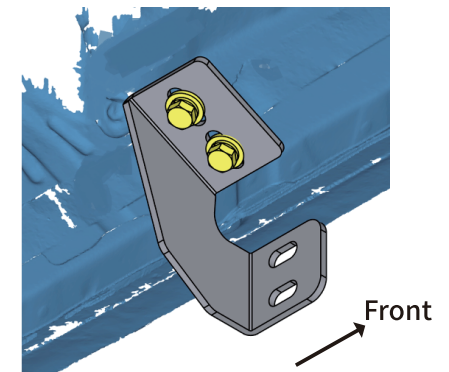
Step 2:

1. Attach the bracket to the thread inserts on inner rocker panel.
2. Secure the bracket to inner rocker panel with (2) M8×25 hex bolts, (2) M8 lock washers, (2) M8 flat washers.

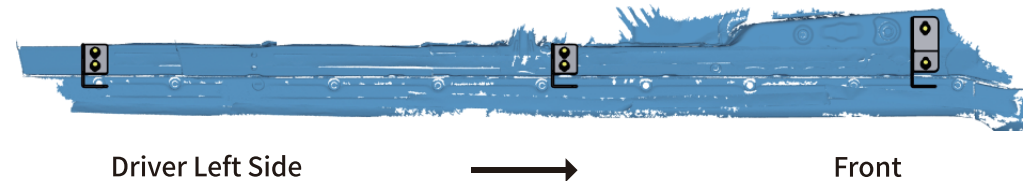
Note: The front brackets are larger and heavier than the center and rear brackets



Front Driver Side



Center Driver Side

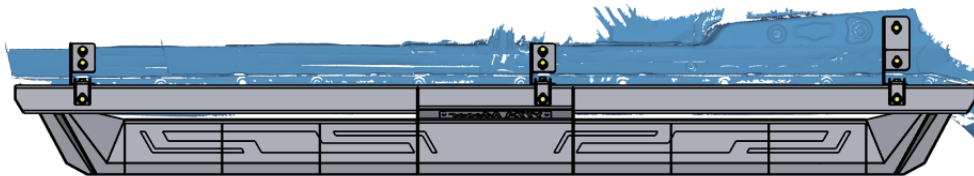
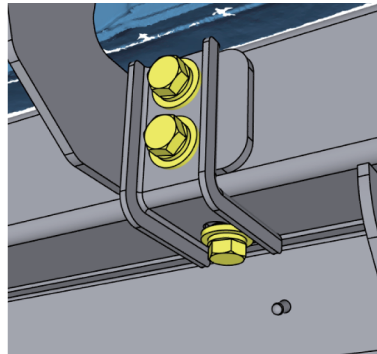
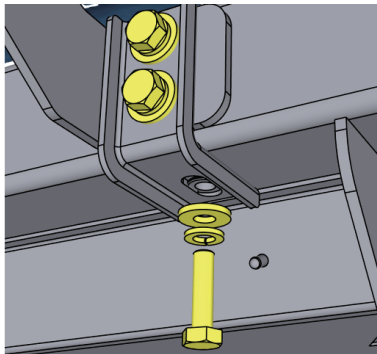
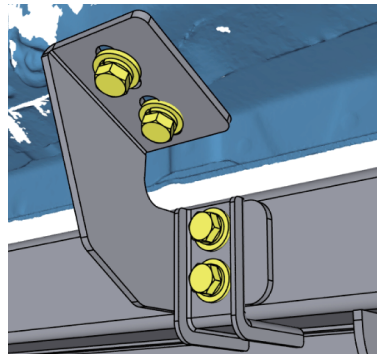
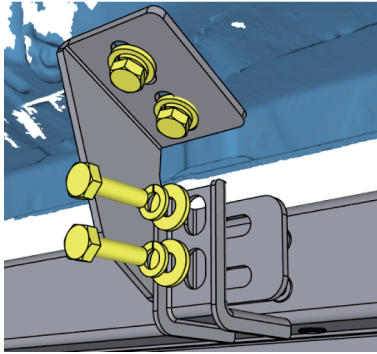


Driver Left Side

Front

Step 3:

1. With assistance, lift and attach the step bar to the brackets.
2. Secure (3) support brackets and step bar onto brackets with (9) M8 flat washers, (9) M8 lock washers, (9) M8×30 hex bolts.



Driver Left Side



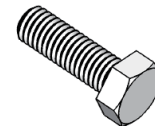
Front

Step 4:

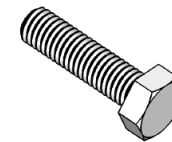
1. Tighten M8 hex bolts on vehicle with 15 ft. lbs. torque.
2. Adjust the step bar to level and tighten M8 hex bolts with 15 ft. lbs. torque.
3. After the step bar installed, periodic check to ensure all mounting hardware remains secure and tight.

Part List:

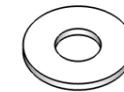
Qty.	Description	Qty.	Description
① ×12	M8×25 Hexagon Bolt	⑥ ×1	Front Passenger Side Bracket
② ×18	M8×30 Hexagon Bolt	⑦ ×2	Center/Rear Driver Side Bracket
③ ×30	M8×20 Flat Washer	⑧ ×2	Center/Rear Passenger Side Bracket
④ ×30	M8 Lock Washer	⑨ ×6	Support Bracket
⑤ ×1	Front Driver Side Bracket		



①



②



③



④



⑤



⑥



⑦



⑧



⑨