

## IMPORTANT SAFETY INFORMATION:



When using the product, basic safety precautions should always be followed to reduce the risk of injury including the

### **⚠ WARNING**

Failure to properly install this product may result in property damage and/or personal injury.

Keep any packaging materials away from children-these materials are a potential source of danger, e.g. suffocation.

- Do not modify the cover in any way. Unauthorized modification may impair the product's function and/or safety and could affect its service life.
- Do not place objects on or against the cover.
- Never stand, sit, or ride on the cover or allow others to do so.
- Do not cover cargo higher than the cover.
- Do not tie cargo to the cover. Do not use the cover's framework to tie down cargo. Never allow children or pets to occupy the tonneau while the cover is closed.
- The cover does not prevent moisture and dust from entering the tonneau. Special wrapping or packaging of the contents may be necessary to keep the cargo clean and dry.
- This product is intended for securing and protecting truck beds and the contents inside.



**Always secure the latches**



**Do not drive with tailgate completely**



**Remove all items including snow before folding the panels**

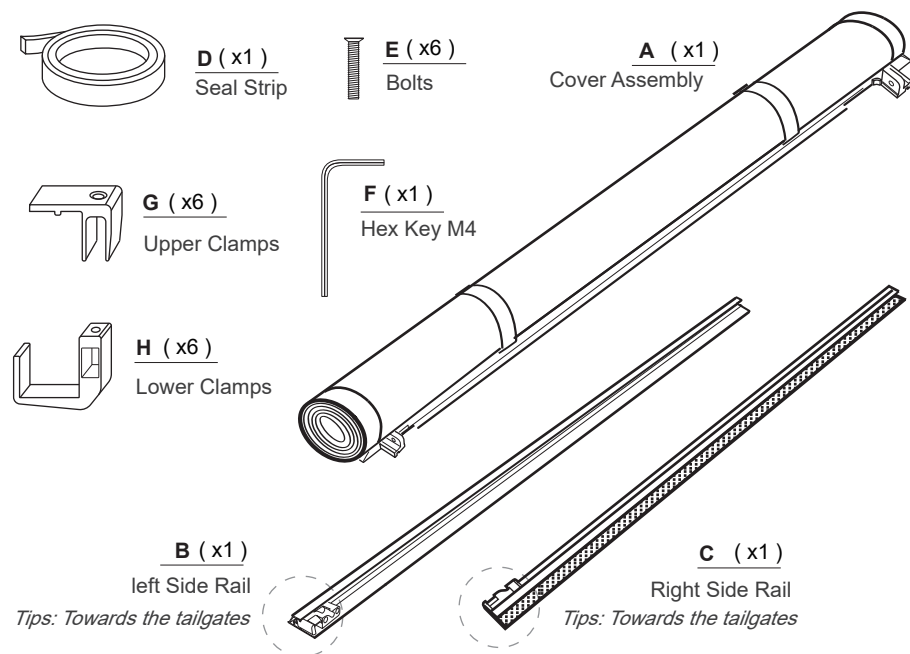


**Do not overload cargo**

## CLEANING AND MAINTENANCE:

- Clean the cover and vehicle in a shaded place like under a tree or in an open garage.
- Flood the cover with water to remove surface grit that will scratch the finish when wiped. Wash the cover with cool, clean water and a mild soap. Use a hose, rinse the cover well, making sure to remove all traces of soap and wipe off excess water using a sponge.
- Do not use rough, abrasive cleaning pads because these can scratch the vinyl, creating pores that allow dirt and other unwanted particles to stick.
- Do not use vinyl protectants that contain petroleum, silicone, or citrus-based additives.
- Check the components regularly to make sure all screws and bolts are tightened.
- Keeping the cover taut: Periodically or as needed, pull the cover tight across width of the truck bed and secure the hook-and-loop fastener on the side rails.

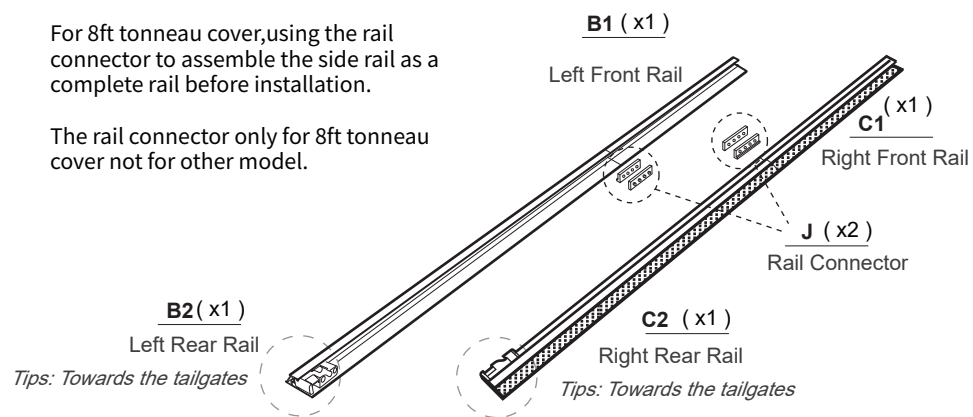
## PART LIST (A):

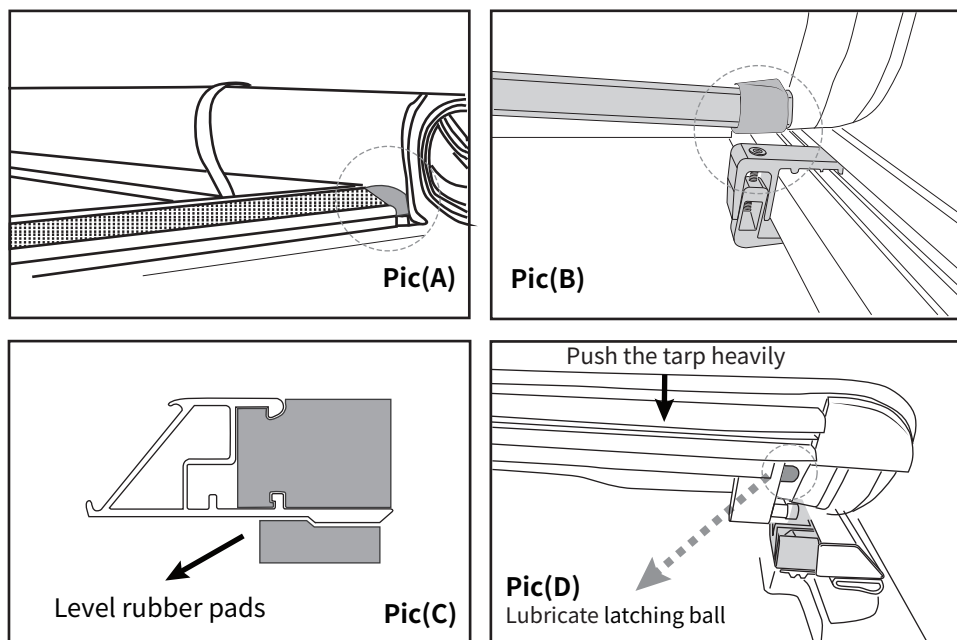


## ADDITIONAL FOR 8ft SIDE RAIL ONLY (B):

For 8ft tonneau cover, using the rail connector to assemble the side rail as a complete rail before installation.

The rail connector only for 8ft tonneau cover not for other model.





#### Question (B):

The cover pop easily during driving.

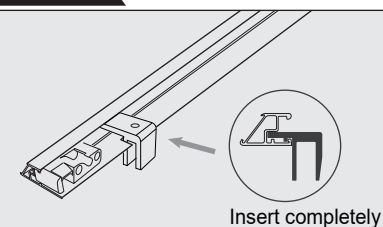
#### Answer:

1. Please re-adjust the distance of the two side rails, make sure the side rails are placed so that the distance from the tailgate is equal on both sides.
2. Check the gaps between latching and tension unit less than 1/16". See step 6
3. Please check the height of level rubber pads to see whether the latching balls can enter the tension unit correctly. If needed, pls add some stripe or foam to make the rubber pads a little high.

#### NOTE

Please check above problem shooting, if you still can't solve the problem, Please take pictures according to above processure, and contact with our professional team, it will do help our specialist a lot to help you solve the problem quickly.

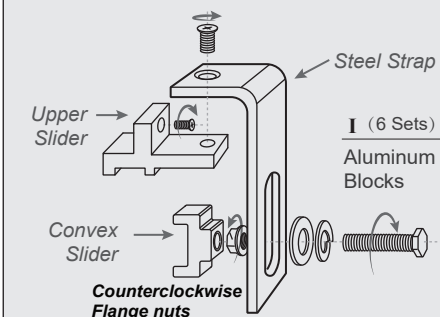
#### Note 1



For the upper Clamps which is not pre-installed in the side rails, Please take out those upper clamps from the hardware box and insert into the side rails channel before step 4.

#### Note 2

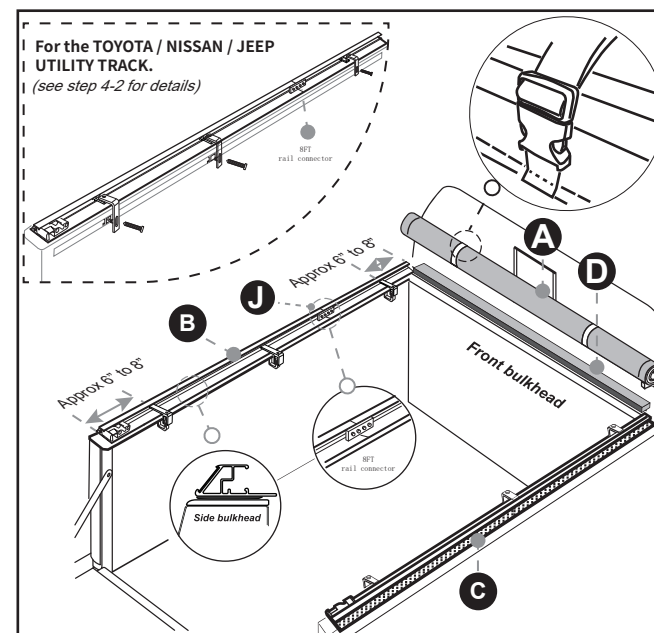
Aluminum Blocks only for the TOYOTA/NISSAN/ JEEP Utility Track not for other models:

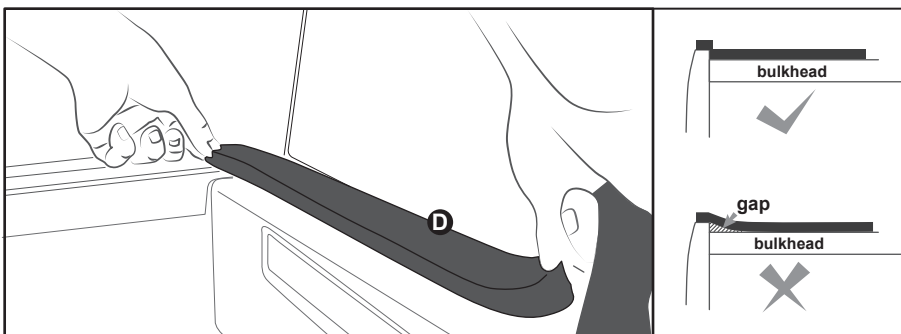


**REQUIRED TOOLS MAY NEED (Not Included):** Screwdriver/Ratchet

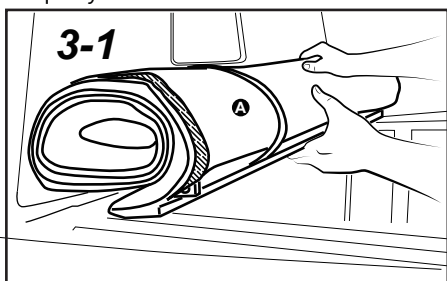
**Tips:** The fittings and replacement accessories shape in pictures only for reference, Please take the material objects as the standard.

## INSTALLITION GUIDE:

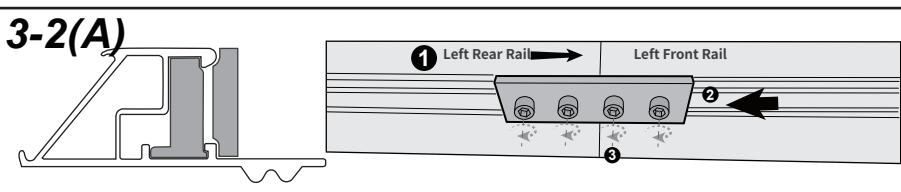




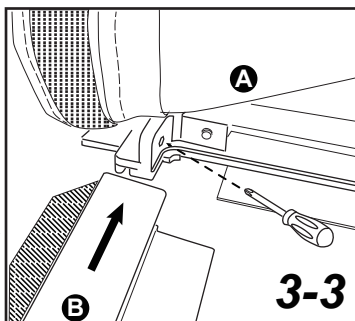
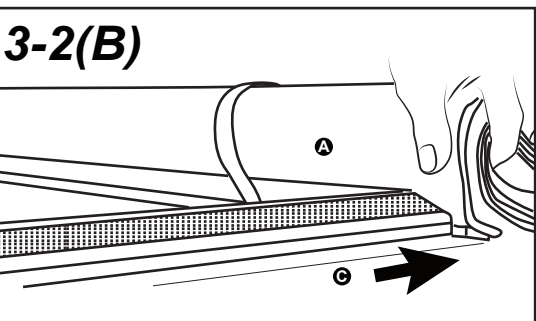
1. Wipe and clean the tonneau before installation. If there is a drop between the front and side of bulkhead, sticking the seal strip(D) to the front bulkhead and align both ends equally.



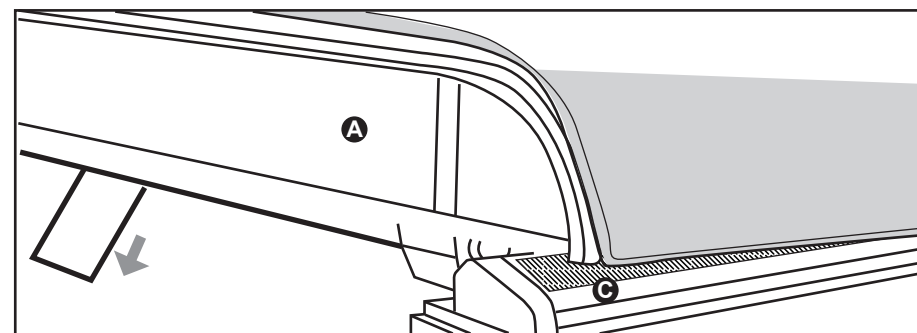
3-1. Place the cover assembly (A) on the bulkhead in front of the truck bed.



3-2(A). If the tonneau cover is smaller than 8ft without rail connector, just go to the step 3-2(B). For the 8ft tonneau cover, need to assemble the side rail. As the picture shown, insert the Rail Connector into the Left Front Rail. Align the Left Rear Rail and the Left Front Rail, then slide the Rail Connector to the middle of two parts of rails. Fasten and secure the bolts.

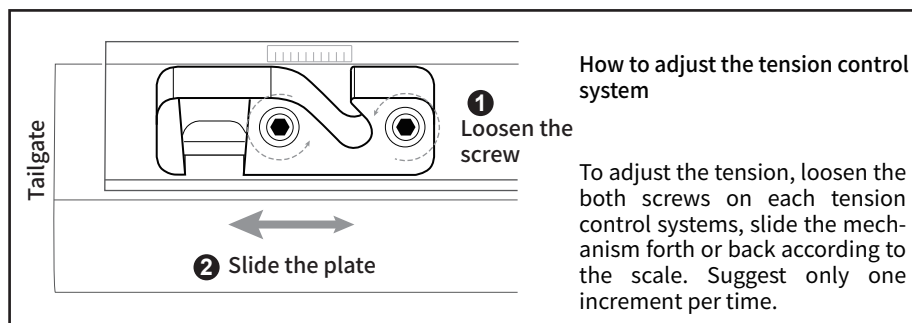


## UNLATCHING



8. Pull the strap to release the rear latching, then roll up the cover from the tailgate towards the bulkhead, and lock the buckles on the cover assembly.

## TENSION CONTROL SYSTEM



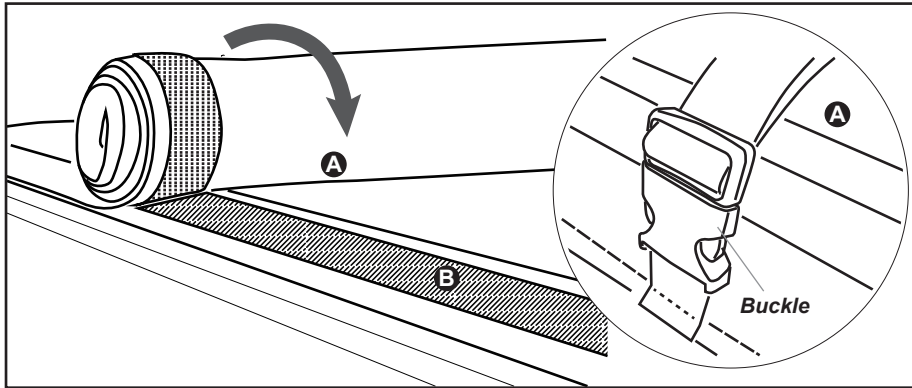
## PROBLEM SHOOTING

### Question (A) :

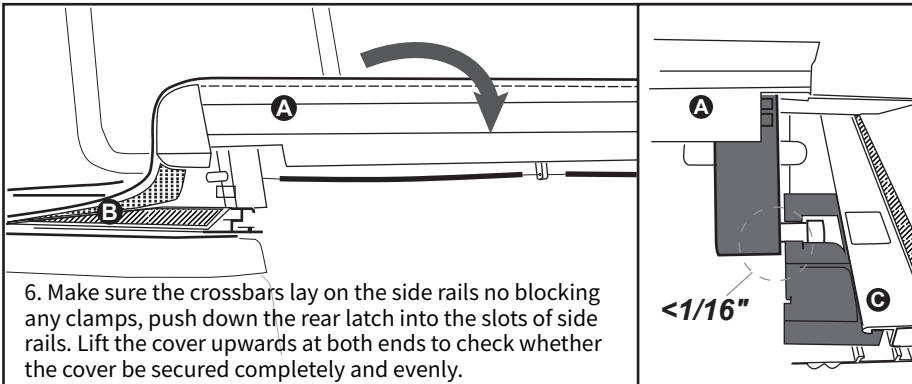
The cover is hard to latch, or side rail seems a little longer than tarp.

### Answer:

- Whether the side rail been inserted into the cover assembly completely without any gaps, sometimes the rubber under the side rail or cover assembly is a little longer to block the connecting completely. See pic (A).
- Whether the cross bar under the cover assembly sit on the side rail evenly no blocking any upper clamps. See pic (B).
- Adjust the tension unit to see whether the tension unit move too far causing the latching problem.
- Check the two special square level rubber pads under the side rail of the position of tension unit, if missing, Latching will be problem, need us to re-sent the rubber pads to attach on. See pic(C).
- Lubricate the ball of latching, and Push the tarp heavily several time, sometime the tarp will be shrink a little after rolling and can't extend to the original size, especially in the cold weather. See pic (D).



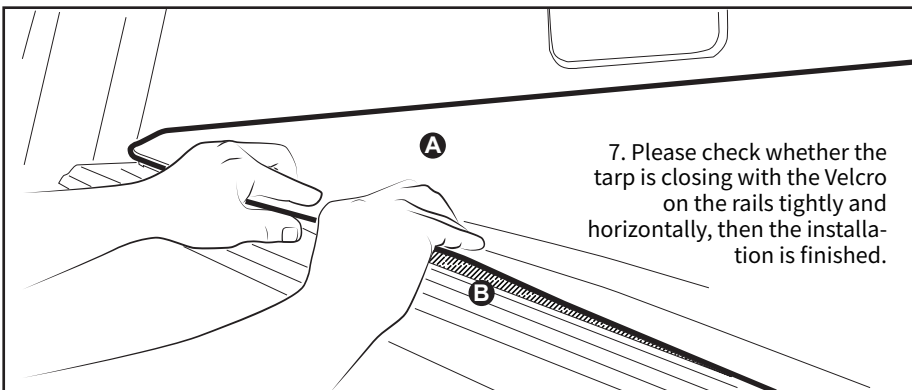
5. Release the buckles on the both sides of cover assembly, then unroll the cover completely from the bulkhead towards the tailgate.



6. Make sure the crossbars lay on the side rails no blocking any clamps, push down the rear latch into the slots of side rails. Lift the cover upwards at both ends to check whether the cover be secured completely and evenly.

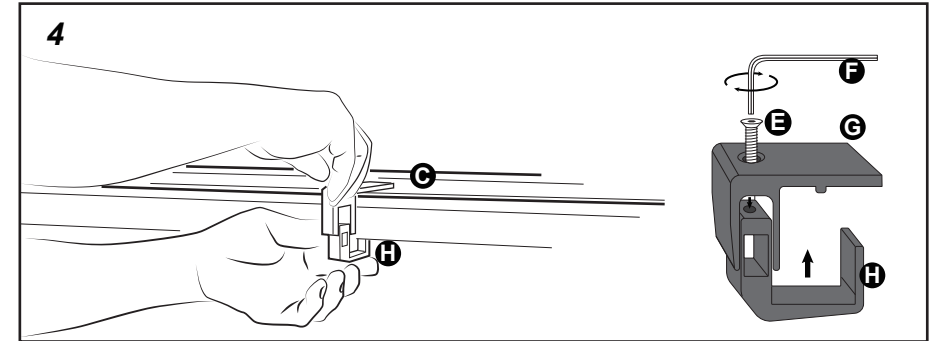
#### NOTE

Please ensure the gap between the locking clip and the side rail at end of the tailgate is less than 1/16" for proper security of the cover. If too large, need to adjust the side rail position.

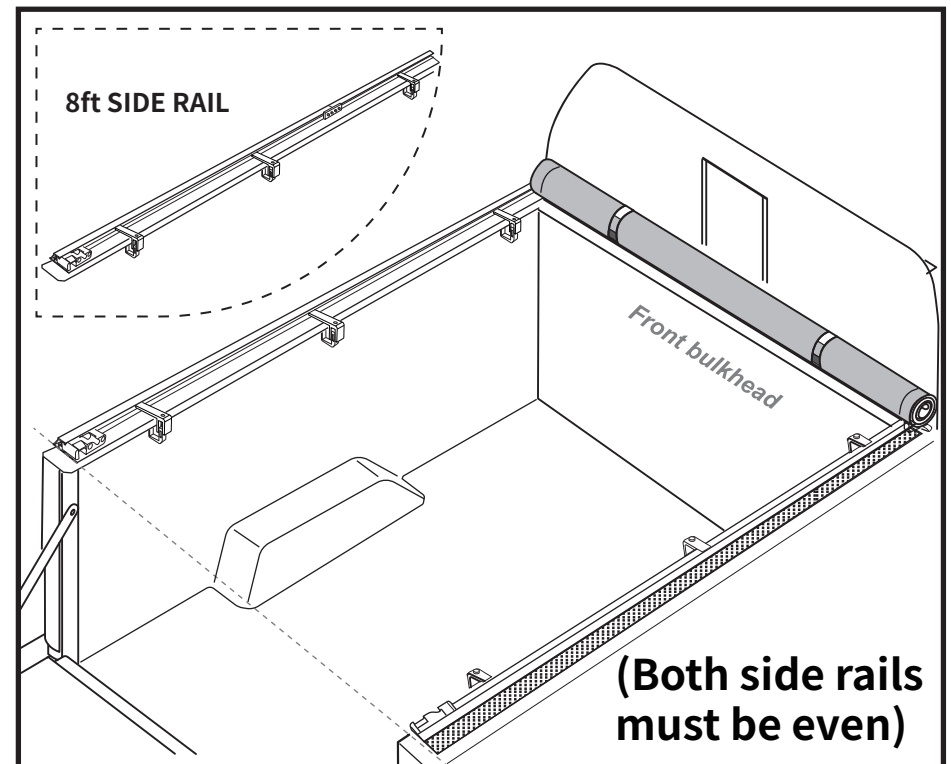


7. Please check whether the tarp is closing with the Velcro on the rails tightly and horizontally, then the installation is finished.

3-2(B). Put one side rail (B/C) on the truck bed and slide into the channel of cover assembly (A).  
3-3 Tighten the set screws on the both corners to secure the connection, do the same way for the other side. Make sure the side rail insert into the cover assembly completely without any gaps.

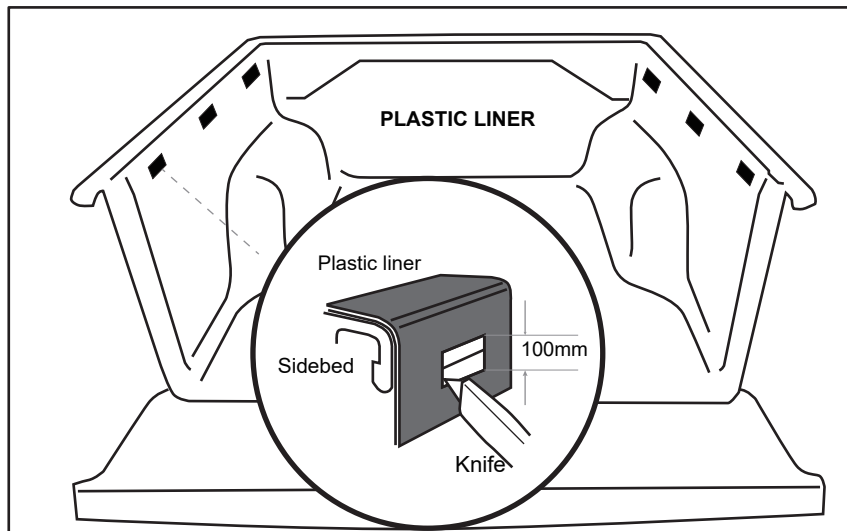


4. Please insert the lower clamps (H) into the truck bed rail lips, and tighten the hex socket screws for the two clamps, do the same way for the other clamps.



Make sure the side rails are placed so that the distance from the tailgate is equal on both sides.

## PLASTIC LINER GUIDE:



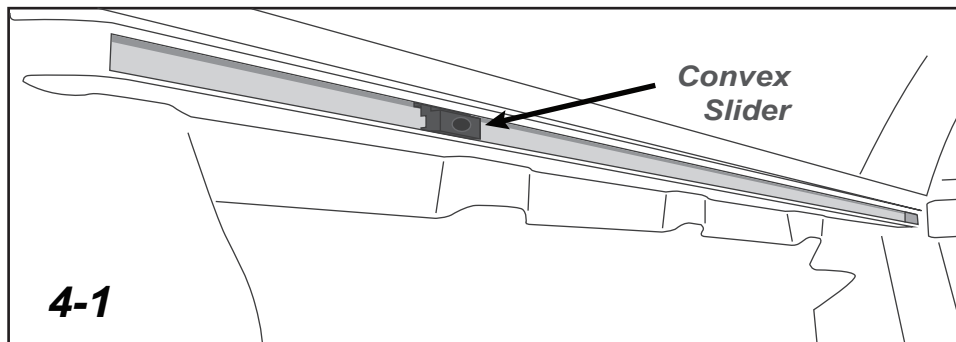
### ⚠ NOTE

If your truck bed covered with long bed liner on the metal side of bed, please cut the plastic off, so the clamp can contact and lock on the metal of side.

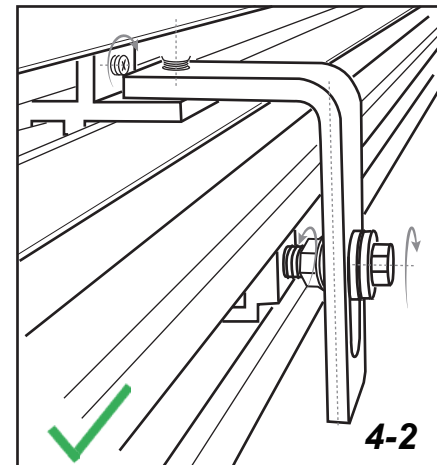
### ⚠ WARNING

Clamp may loosen easily and cause the tonneau cover open during driving if only lock on the plastic bed-liner.

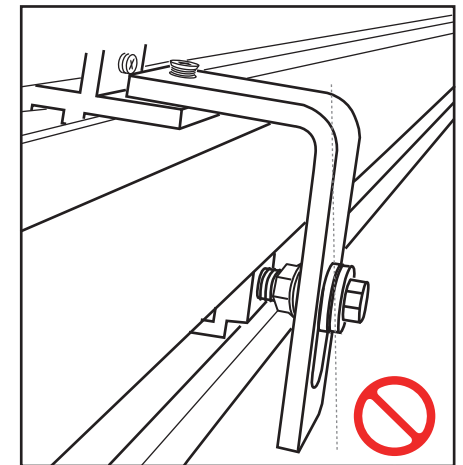
## INSTALLTION FOR THE UTILITY TRACK:



4-1. Insert convex slider into the utility tracks (on both sides of the tonneau).



4-2. Attach the upper alu slider into the rails, then tighten the bolts as picture shown to secure the steel trap into the utility tracks. Then counterclockwise to tighten the flange nuts towards the steel straps closely. The steel straps must be straight.



4-3. Add some washers for bolts length adjustment if they are too long and make the steel straps tilting.

