

Tools Required

13mm, 16mm Socket

16mm Wrench

Ratchet

Torque Wrench

Before You Begin

Read instructions thoroughly before installation.

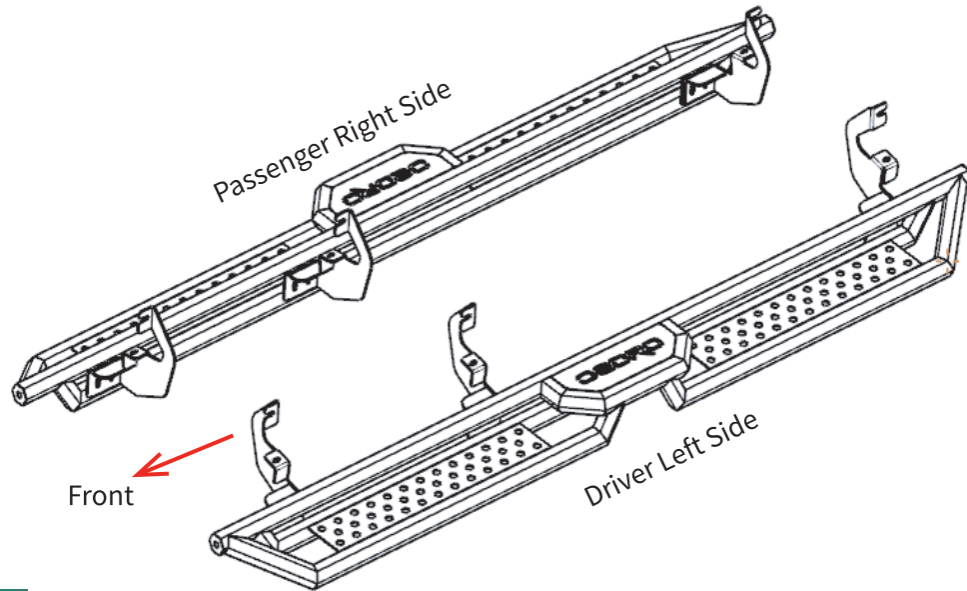
Installation sequence: Mount brackets, position step bars, then tighten all

Prep Work: Clear any paint or debris from the factory studs.

Use proper tools to ensure a correct fit and save time.

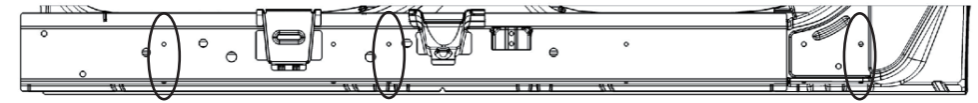
Damaged or missing parts? Please take a photo and contact us for support.

Professional installation would be highly recommended.



STEP 1:

1. Locate (4) mounting positions each side.
2. Remove factory plugs from mounting positions.
3. Clean the sealant and dirt around mounting positions.

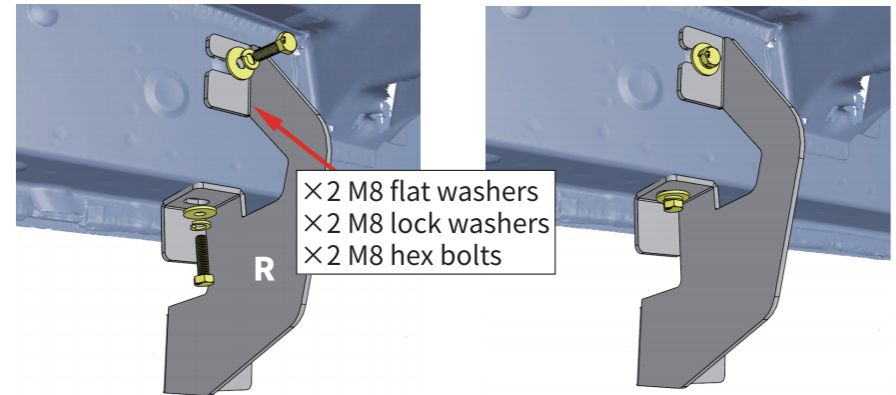


Front

Passenger Right Side

STEP 2:

1. Attach bracket to the rocker panel and secure with (2) M8 hex bolts, (2) M8 flat washers, (2) M8 lock washers.
2. Repeat to install all brackets. Do not fully tighten.



Front

Passenger Right Side

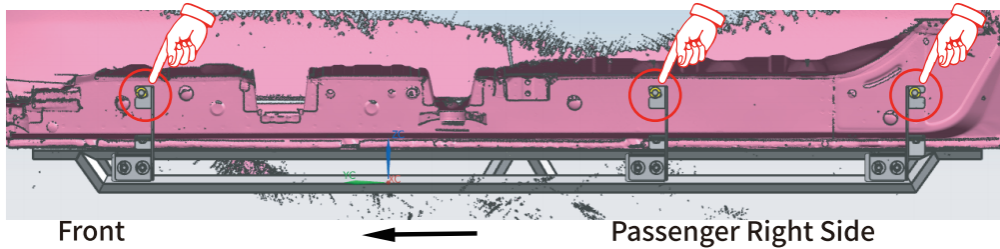
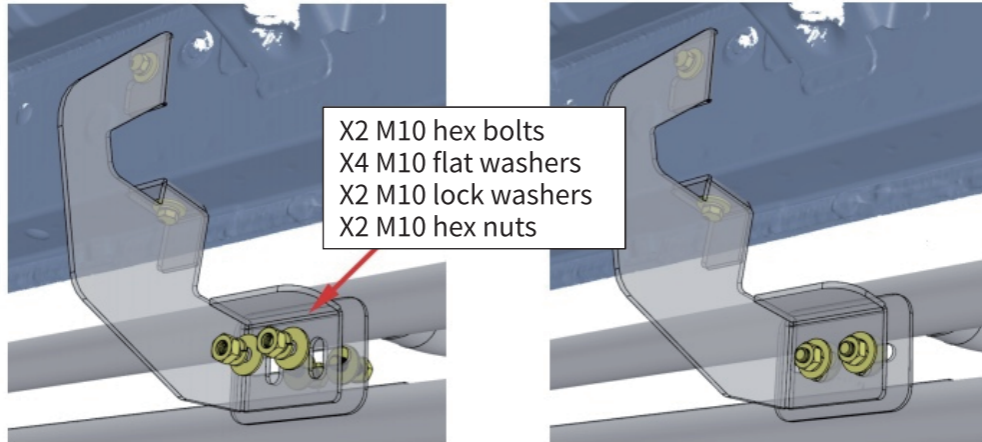


Note:

The rear bracket is in the opposite direction to the front and center brackets.

STEP 3:

1. With assistance, lift and attach the step bar to brackets. Secure the step bar on brackets using (6) M10 hex bolts, (12) M10 flat washers, (6) M10 lock washers, (6) M10 hex nuts.
2. Repeat to install the other side step bar.



STEP 4:

1. Tighten M8 hex bolts on vehicle with 15 ft. lbs. torque.
2. Adjust the step bar to level and tighten M8 hex bolts with 15 ft. lbs. torque.
3. After the step bar installed, periodic check to ensure all mounting hardware remains secure and tight.

Part List

	Qty.	Description
①	x2	Front/Center Driver Left Bracket (L)
②	x1	Rear Driver Left Side Bracket (L)
③	x2	Front/Center Passenger Right Side Bracket (R)
④	x1	Rear Passenger Right Bracket (R)
⑤	x12	M10X30 Hexagon Bolt
⑥	x12	M8X30 Hexagon Bolt
⑦	x24	M10X25 Flat Washer
⑧	x12	M8X25 Flat Washer
⑨	x12	M10 Lock Washer
⑩	x12	M8 Lock Washer
⑪	x12	M10 Hexagon Nut

