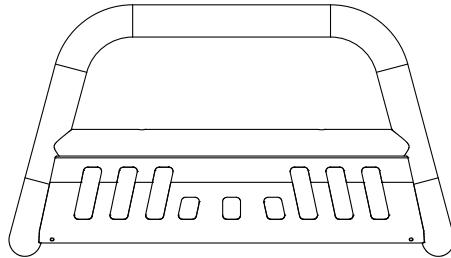


Tools Required

19 mm Socket
19 mm Wrench
Ratchet
Torque Wrench



Before Installation:

Read this instruction carefully before starting installation.

Proper tools will improve the quality of installation and reduce the time required.

If missing parts or any damage found, please take a picture and contact us.

Professional installation would be highly recommended.

Bull bar may interfere with front sensors.

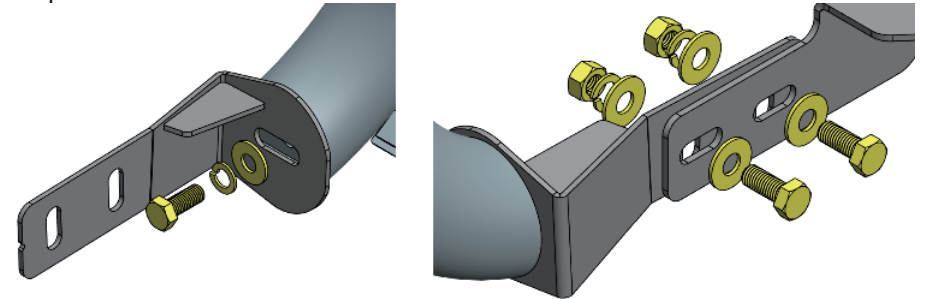
Step 1:

1. Locate and remove the factory tow hooks underneath the vehicle.
2. Select one of the frame bracket and secure to frame rail using factory bolts.



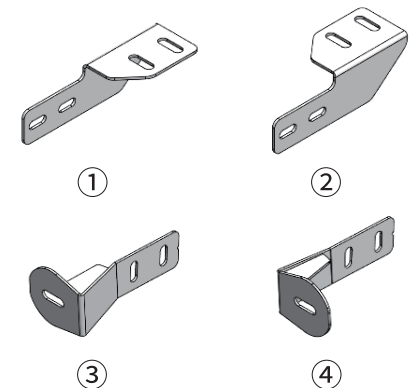
Step 2:

1. Attach the tube tabs to the bull bar and secure with (2) M12 hex bolts, (2) M12 flat washers, (2) M12 lock washers. Driver side is shown.
2. With assistance, lift and attach mounting tabs on bull bar with the the (2) previously installed mounting brackets.
2. Secure bull bar to brackets with (4) M12 hex bolts, (8) M12 flat washers, (4) M12 lock washers, (4) M12 hex nuts.
3. Level and adjust bull bar properly and tighten M12 hardware with 50 ft.lbs torque.



Part List:

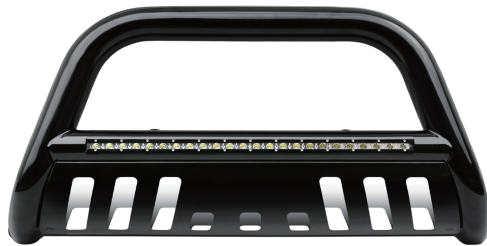
	Qty.	Description
①	×1	Driver Side Frame Bracket
②	×1	Passenger Side Frame Bracket
③	×1	Driver Side Bull Bar Bracket
④	×1	Passenger Side Bull Bar Bracket
⑤	×6	M12×30 Hexagon Bolt
⑥	×10	M12×30 Flat Washer
⑦	×6	M12 Lock Washer
⑧	×4	M12 Hexagon Nut



Tools Required

19 mm Socket
19 mm Wrench
Ratchet
Torque Wrench

CEETBX-5066



Before Installation:

Read this instruction carefully before starting installation.

Proper tools will improve the quality of installation and reduce the time required.

If missing parts or any damage found, please take a picture and contact us.

Professional installation would be highly recommended.

Bull bar may interfere with front sensors.

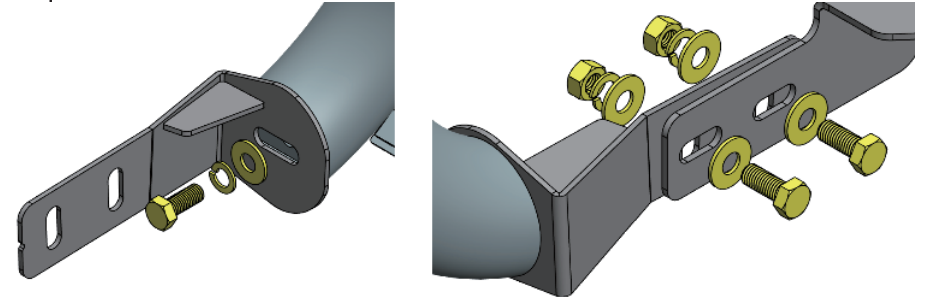
Step 1:

1. Locate and remove the factory tow hooks underneath the vehicle.
2. Select one of the frame bracket and secure to frame rail using factory bolts.



Step 2:

1. Attach the tube tabs to the bull bar and secure with (2) M12 hex bolts, (2) M12 flat washers, (2) M12 lock washers. Driver side is shown.
2. With assistance, lift and attach mounting tabs on bull bar with the the (2) previously installed mounting brackets.
2. Secure bull bar to brackets with (4) M12 hex bolts, (8) M12 flat washers, (4) M12 lock washers, (4) M12 hex nuts.
3. Level and adjust bull bar properly and tighten M12 hardware with 50 ft.lbs torque.



Part List:

	Qty.	Description
①	×1	Driver Side Frame Bracket
②	×1	Passenger Side Frame Bracket
③	×1	Driver Side Bull Bar Bracket
④	×1	Passenger Side Bull Bar Bracket
⑤	×6	M12×30 Hexagon Bolt
⑥	×10	M12×30 Flat Washer
⑦	×6	M12 Lock Washer
⑧	×4	M12 Hexagon Nut
⑨	×1	Wire Harness

