

Before Installation:

Read this instruction carefully before starting installation.

Proper tools will improve the quality of installation and reduce the time required.

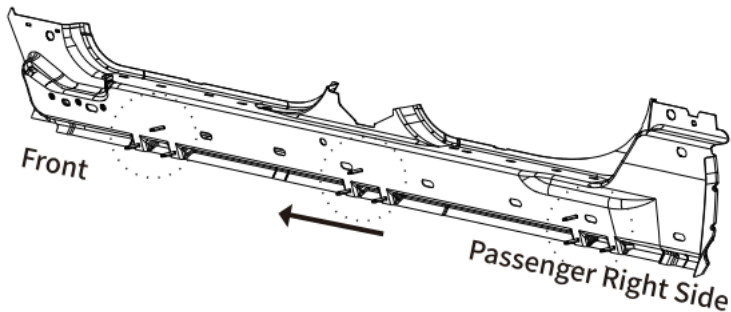
Remove the paint buildup on the factory threaded studs.

If missing parts or any damage found, please take a picture and contact us.

Professional installation would be highly recommended.

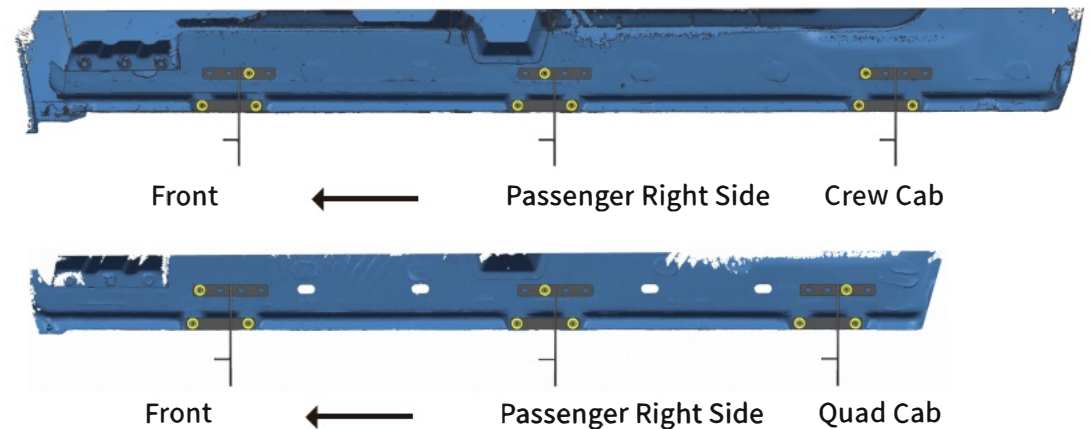
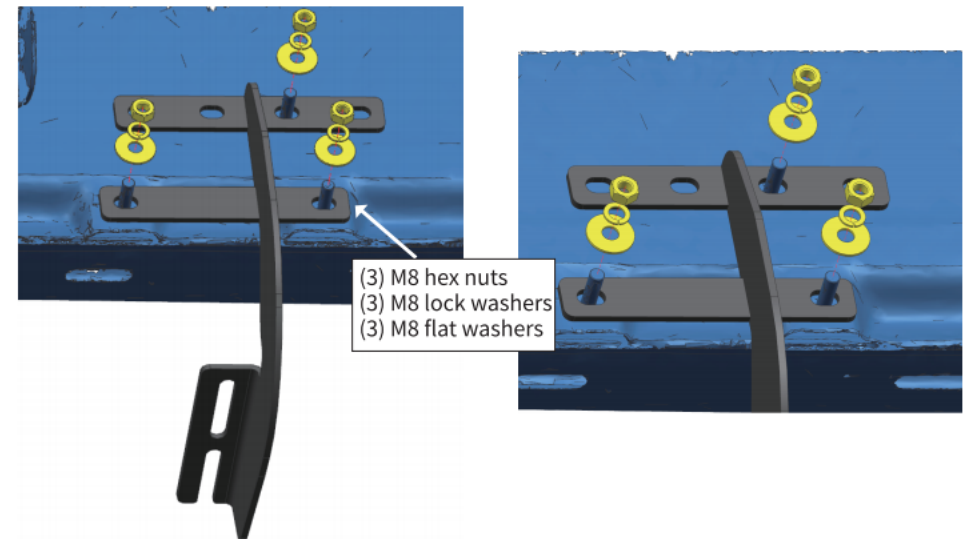
Step 1:

1. Locate (3) mounting positions each side.
2. Remove the paint buildup on the factory threaded studs.
3. Clean the sealant and dirt around mounting positions.



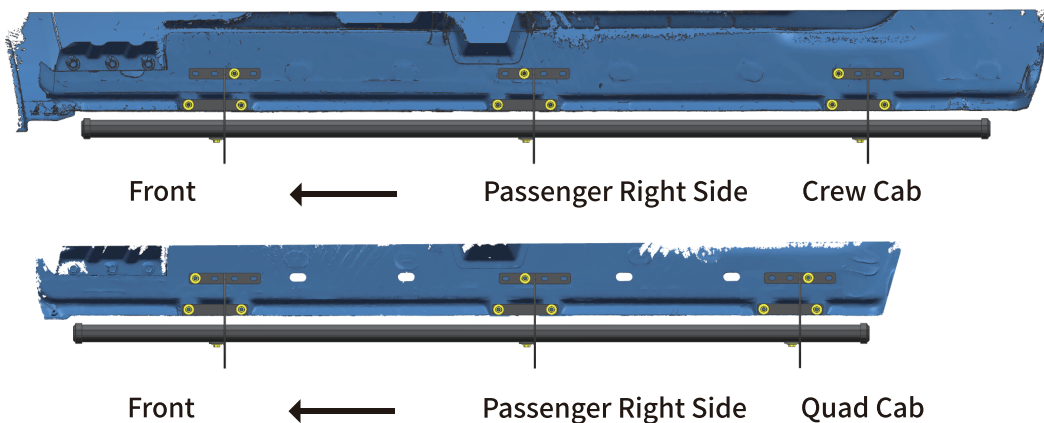
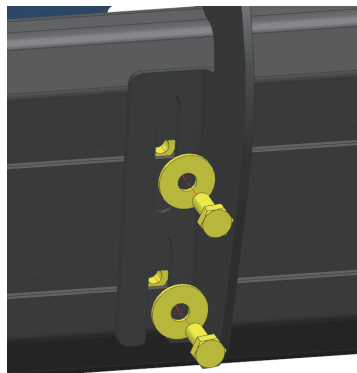
Step 2:

1. Attach bracket to the inner rocker panel, feed the factory studs through the holes on mounting bracket.
2. Secure the mounting bracket with (3) M8 flat washers, (3) M8 lock washers, (3) M8 hex nuts.
3. Repeat to install all brackets. Do not fully tighten.



Step 3:

1. Remove (6) M8 hex bolts and (6) M8 flat washers underneath the step bar.
2. Slide mounting track to proper positions.
3. With assistance, take the step bar to brackets.
Secure the step bar on brackets with (6) M8 hex bolts and (6) M8 flat washers.
4. Repeat to install the other side step bar.



Step 4:

1. Tighten M8 hex nuts on vehicle with 15 ft-lbs. torque.
2. Adjust the step bar to level and tighten M8 hex bolts with 15 ft-lbs. torque.
3. After the step bar installed, periodic check to ensure all mounting hardware remains secure and tight.

Part List:

	Qty.	Description
①	× 6	Mounting Bracket
②	× 18	M8 Hexagon Nut
③	× 18	M8 Flat Washer
④	× 18	M8 Lock Washer
Pre-Install on Step Bar		
⑤	× 12	M8 Hexagon Flange Bolt
⑥	× 12	M8 Flat Washer

