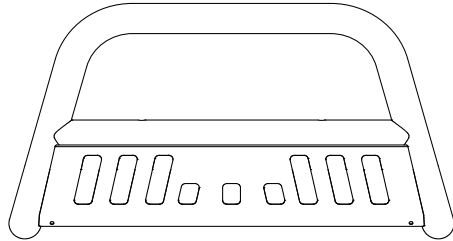


### Tools Required

19 mm Socket
19 mm Wrench
Ratchet
Torque Wrench



## Before Installation:

Read this instruction carefully before starting installation.

Proper tools will improve the quality of installation and reduce the time required.

If missing parts or any damage found, please take a picture and contact us.

**Professional installation would be highly recommended.**

Bull bar may interfere with front sensors.

## Step 1:

### For vehicles with factory tow hooks:

1. Remove skid plate to access tow hook mounting spots (04-08 models).  
Cut plastic tow hook trim to access tow hook mounting spots (15-present models).
2. Remove the factory tow hooks.
3. Keep the factory double nut plate in the frame and aligned with the holes.

### For vehicles without factory tow hooks:

1. Cut or remove the panel as required to gain access to the front of the frame rail to allow bottom brackets to pass through the bumper cover.

## Step 2:

### For vehicles with factory tow hooks:

1. Position the Mounting Bracket up to the bottom of the frame and secure it with the factory tow hook bolts and factory double nut plate

### For vehicles without factory tow hooks(opened end):

1. Insert (1) M12 bolt plate through the opening in the open front end of the frame and down through the rear hole in the bottom of the frame.
2. Thread (1) M12×30 flat washer , (1) M12 lock washer and (1) M12 hex nut onto the threaded end of the bolt plate.
3. Slide the slotted end of the driver side mounting bracket under the nut and washers. Insert the second M12 bolt plate through the remaining hole toward the front of the mounting bracket.
4. Secure with (1) M12×30 flat washer , (1) M12 lock washer and (1) M12 hex nut. Do not fully tighten.

### For vehicles without factory tow hooks(closed end):

1. Locate the two holes on the bottom of the frame. Insert (1) M10 U-Bolt into one hole and out the other.
2. Hold the driver side mounting bracket in position with the slotted end toward the rear.
3. Secure the mounting bracket to the U-Bolt with (2) M10×30 flat washers, (2) M10 lock washer and (2) M10 hex nuts. Do not fully tighten.



With Factory Tow Hook



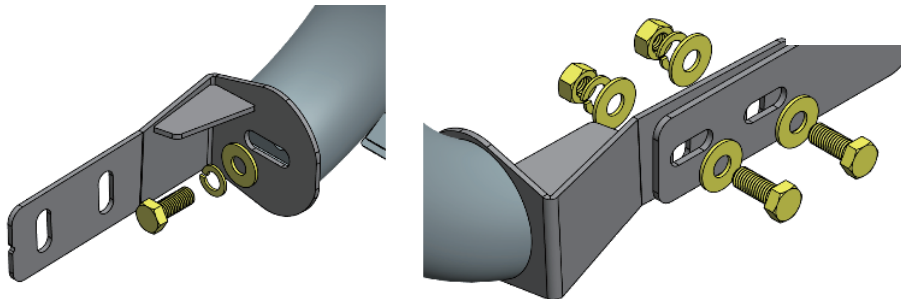
Opened End Frame Rail



Closed End Frame Rail

### Step 3:

1. Select bull bar mounting brackets to the bull bar and secure with (2) M12 hex bolts, (2) M12 flat washers, (2) M12 lock washers.
2. Driver side is shown, repeat on the passenger side.
3. With assistance, lift and attach mounting tabs on bull bar with the outside of (2) previously installed bull bar brackets.
4. Secure bull bar to brackets with (4) M12 hex bolts, (8) M12 flat washers, (4) M12 lock washers, (4) M12 hex nuts.
5. Level and adjust bull bar properly and tighten M12 hardware to 50 ft.lbs.
6. After the bull bar installed, periodic check to ensure all mounting hardware



### Part List:

	Qty.	Description
①	×1	Driver Side Mounting Bracket
②	×1	Passenger Side Mounting Bracket
③	×1	Driver Side Bull Bar Bracket
④	×1	Passenger Side Bull Bar Bracket
⑤	×4	M12 Bolt Plate
⑥	×2	M10 U-Bolt
⑦	×6	M12×35 Hexagon Bolt
⑧	×14	M12×30 Flat Washer
⑨	×4	M10×30 Flat Washer
⑩	×10	M12 Lock Washer
⑪	×4	M10 Lock Washer
⑫	×8	M12 Hexagon Nut
⑬	×4	M10 Hexagon Nut

