

Before Installation:

Read this instruction carefully before starting installation.

Proper tools will improve the quality of installation and reduce the time required.

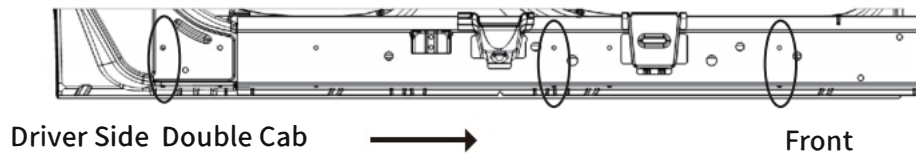
If missing parts or any damage found, please take a picture and contact us.

Professional installation would be highly recommended.

Periodic check to ensure all mounting hardware remains secure and tight.

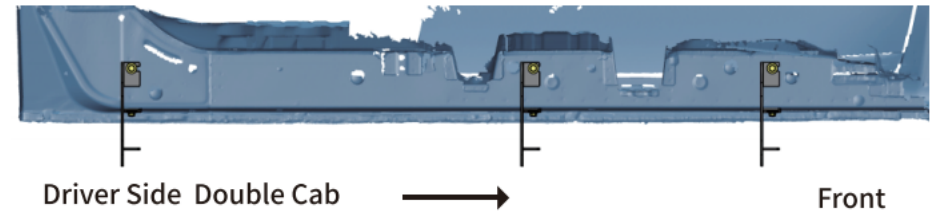
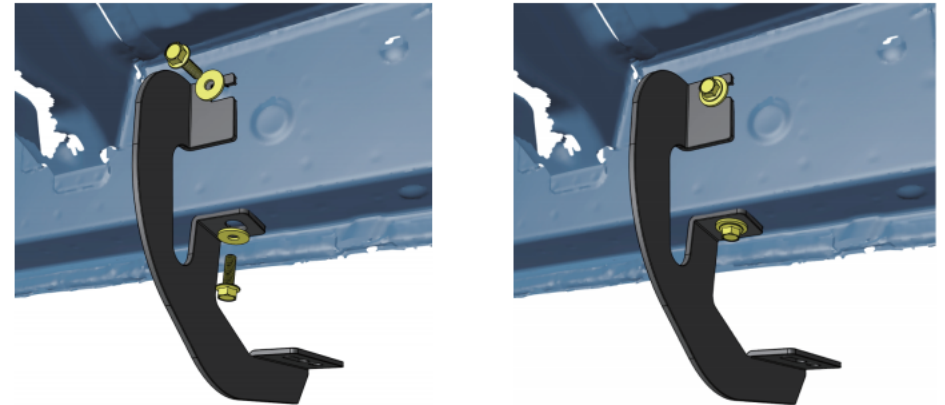
Step 1:

1. Locate (3) mounting positions each side.
2. Remove the rubber plugs on the inner rocker panel.



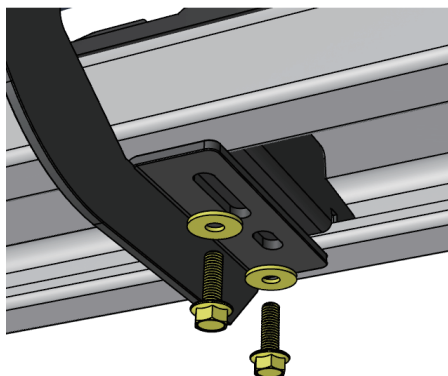
Step 2:

1. Attach the bracket to the inner rocker panel and secure with (2) M8 hex bolts, (2) M8 flat washers.
2. Repeat to install remaining brackets, do not fully tighten.

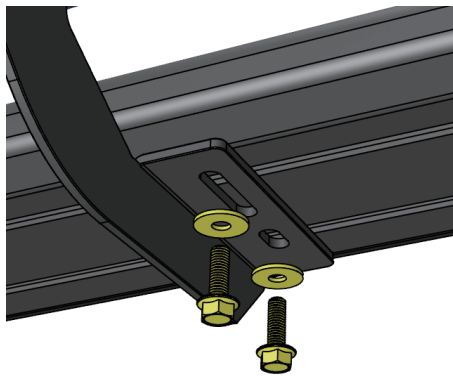


Step 3:

1. Remove (6) M8 hex bolts and (6) M8 flat washers from the step bar.
2. Slide mounting tracks to proper positions.
3. With assistance, lift and attach the step bar to brackets.
Secure the step bar on brackets with (6) M8 hex bolts and (6) M8 flat washers.
4. Repeat to install the other side step bar, do not fully tighten.



Stainless Steel Step Bar



Aluminum Alloy Step Bar



Driver Side Double Cab



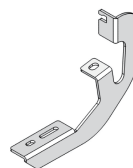
Front

Step 4:

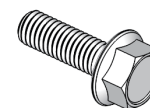
1. Tighten M8 hex bolts and nuts on vehicle with 15 ft-lbs. torque.
2. Adjust the step bar to level and tighten M8 hex bolts with 15 ft-lbs. torque.
3. After the step bar installed, periodic check to ensure all mounting hardware remains secure and tight.

Part List:

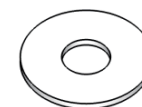
	Qty.	Description
①	×6	Mounting Bracket
②	×12	M8 Hexagon Bolt
③	×12	M8 Flat Washer
④	×12	M8 Hexagon Nut
Pre-installed on Step Bar		
⑤	×12	M8 Hexagon Bolt
⑥	×12	M8 Flat Washer



①



②



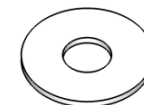
③



④



⑤



⑥