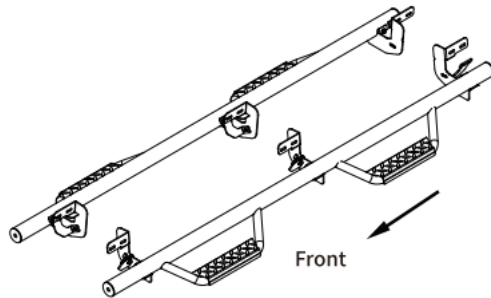


Tools Required

13mm Socket
Ratchet
Torque Wrench



Before Installation:

Read this instruction carefully before starting installation.

The 09-12 models require self-drilling on pinch weld to install brackets. Proper tools will improve the quality of installation and reduce the time required.

If missing parts or any damage found, please take a picture and contact us.

Professional installation would be highly recommended.

Periodic check to ensure all mounting hardware remains secure and tight.

Step 1:

1. Locate three mounting positions each side.
2. Remove the factory tape and clean the sealant and dirt around factory holes on mounting positions.

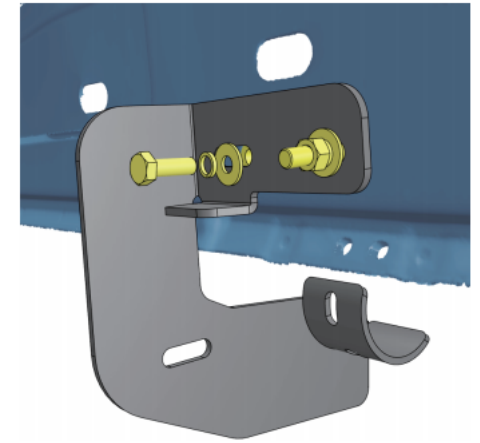
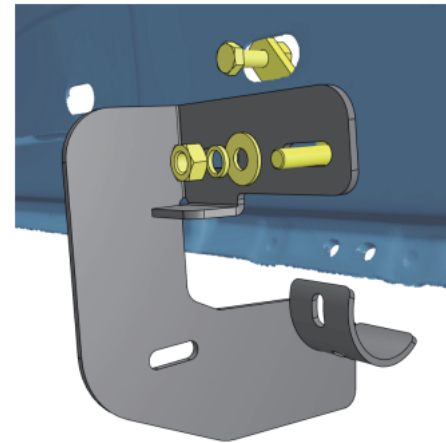
Step 2A:

For models w/o factory thread inserts

1. Thread M8×25 hex bolt into M8 bolt plate until the M8 hex bolt reaches the other end of welded nut.
2. Use the M8×25 hex bolt as a handle to insert bolt plate into factory oval hole. Feed the thread through factory hexagon hole.
3. Secure the bolt plate using the PVC retainer.



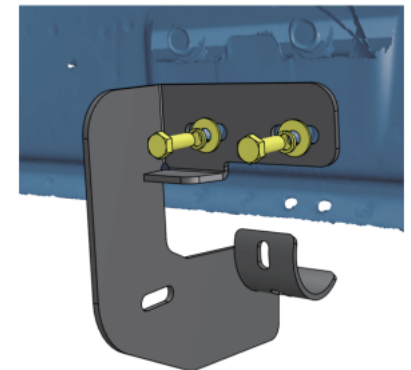
4. Attach the main bracket to the thread end of the bolt plate and secure with (1) M8 flat washer, (1) M8 lock washer, (1) M8 hex nut.
5. Remove the M8×25 hex bolt from bolt plate. Twist bolt plate until the weld nut lines up with the remaining hex hole.
6. Secure the bracket to rocker panel with (1) M8×25 hex bolt, (1) M8 flat washer, (1) M8 lock washer.
7. Repeat to install all main brackets.



Step 2B:

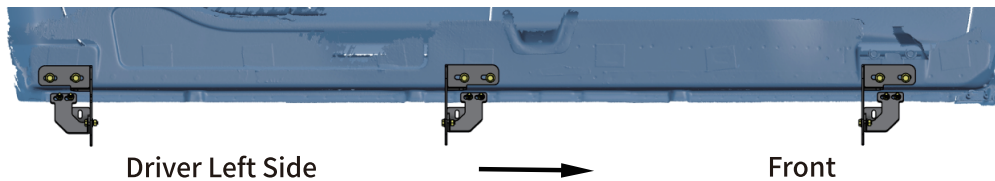
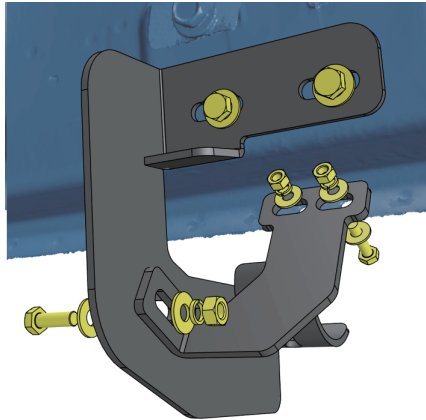
For models w/ factory thread inserts

1. For the front and rear mounting positions, attach the main bracket to rocker panel.
2. Secure main bracket on rocker panel with (2) M8×25 hex bolts, (2) M8 flat washers, (2) M8 lock washers.



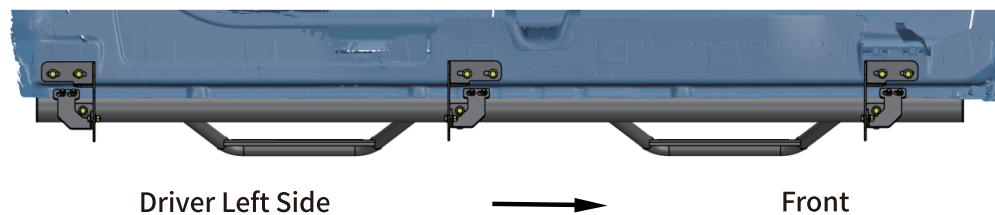
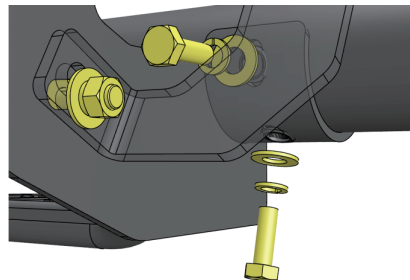
Step 3:

1. Attach the proper assist bracket to the main bracket and secure with (1) M8×25 hex bolt, (2) M8 flat washers, (1) M8 lock washer, (1) M8 hex nut.
2. Rotate assist bracket to the back of the pinch weld. Line up the slots in the top of the assist bracket with the factory holes on the pinch weld and secure with (2) M6×25 hex bolts, (4) M6 flat washers, (2) M6 hex nuts.



Step 4:

1. With assistance, lift and attach the step bar to brackets and secure with (6) M8×25 hex bolts, (6) M8 flat washers, (6) M8 lock washers.



Step 5:

1. Tighten M6 hex bolts and nuts with 7 ft. lbs. torque.
2. Tighten M8 hex bolts and nuts with 15 ft. lbs. torque.
3. After the step bar installed, periodic check to ensure all mounting hardware remains secure and tight.

Part List:

	Qty.	Description	⑤	× 6	M8 Bolt Plate w/ Weld Nut
①	× 3	Front/Center Driver & Rear Passenger Side Bracket	⑥	× 30	M8×25 Hexagon Bolt
②	× 3	Front/Center Passenger & Rear Driver Side Bracket	⑦	× 12	M6×25 Hexagon Bolt
③	× 3	Front/Center Driver & Rear Passenger Side Assist Bracket	⑧	× 36	M8×24 Flat Washer
④	× 3	Front/Center Passenger & Rear Driver Side Assist Bracket	⑨	× 24	M6×18 Flat Washer
			⑩	× 30	M8 Lock Washer
			⑪	× 12	M8 Hexagon Nut
			⑫	× 12	M6 Hexagon Nut
			⑬	× 6	PVC Retainer

