

Tools Required

16mm, 19mm Socket

19mm Wrench

Ratchet

Torque Wrench



Before Installation:

Read this instruction carefully before starting installation.

Proper tools will improve the quality of installation and reduce the time required.

If missing parts or any damage found, please take a picture, and contact us.

Professional installation would be highly recommended.

Periodic check to ensure all mounting hardware remains secure and tight.

The rear spot light require self-wiring, the harness is not include.

Do NOT exceed vehicle manufacture recommended towing capacity.

For more towing and off-road recovery information, please check the vehicle owner's manual.

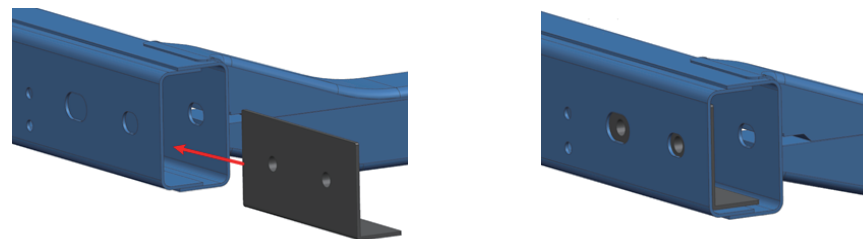
Step 1:

1. Remove (4) M10 bolts securing each side brace in place.
2. Remove (4) M12 bolts securing the Z-shaped brackets on the crossmember.
3. Remove (4) M12 bolts to remove the trailer hitch if equipped.
4. With assistance, remove the rear bumper from vehicle.
5. Remove (3) M12 bolts securing the tow hook on driver side frame rail.

Step 2:

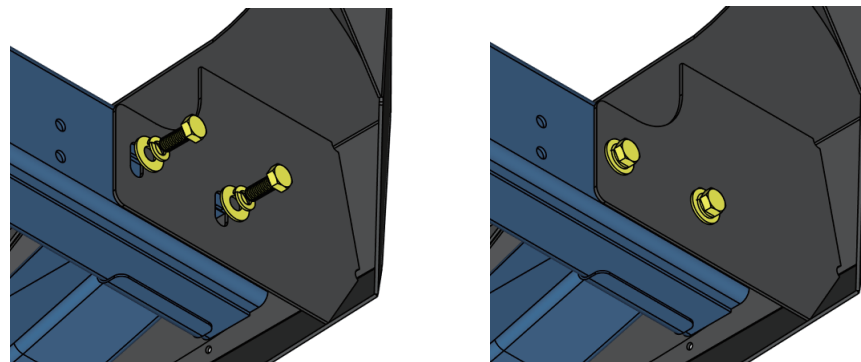
1. Take L-shaped bracket and place it into body frame rail of the Jeep.
2. Guild the bracket to align the weld nut with the oval hole on body frame rail.

Note: Driver side is shown, repeat on passenger side.



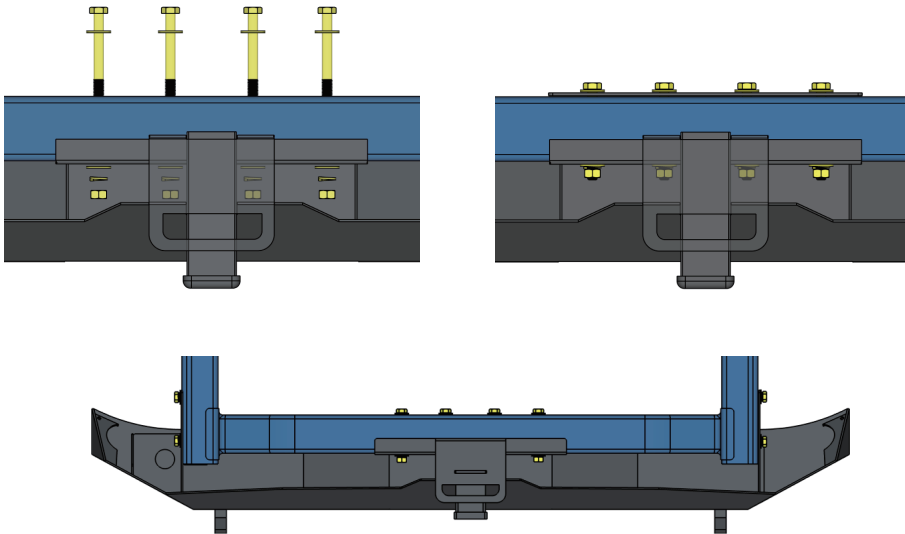
Step 3:

1. With assistance, lift and attach the rear bumper to the crossmember.
2. Secure the bumper to the frame rail using (4) M12×30 hex bolts, (4) M12 flat washers, (4) M12 lock washers.



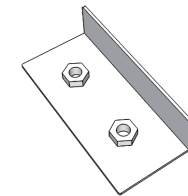
Step 4:

1. Insert the M12×110 hex bolts from the inner side of the crossmember.
2. Secure the trailer hitch to crossmember using (4) M12×110 hex bolts, (8) M12 flat washers, (4) M12 lock washers, (4) M12 hex nuts.
4. Tighten M12 bolts and nuts to 50 ft. lbs. torque.



Part List:

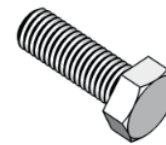
	Qty.	Description
①	×2	L-Shaped Bracket
②	×2	D-Ring Shackle
③	×4	M12×30 Hexagon Bolt
④	×4	M12×110 Hexagon Bolt
⑤	×12	M12×30 Flat Washer
⑥	×8	M12 Lock Washer
⑦	×4	M12 Hexagon Nut



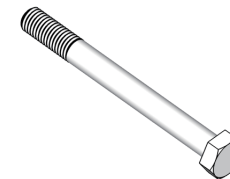
①



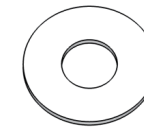
②



③



④



⑤



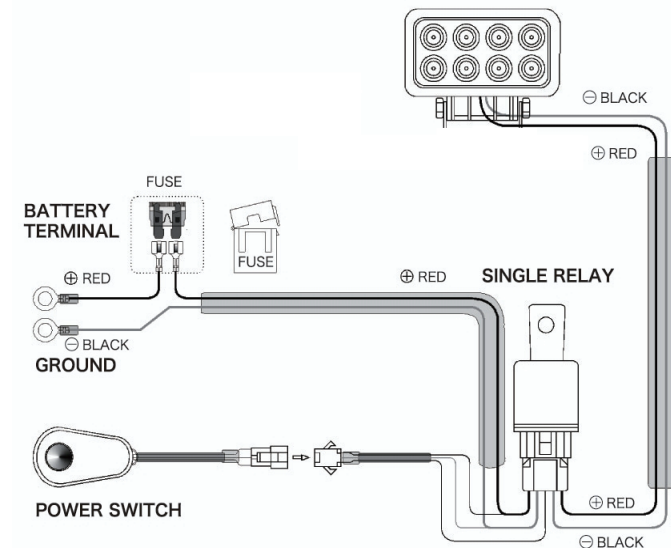
⑥



⑦

Step 5:

1. Install (2) D-rings on shackle mounting brackets.
2. After the bumper installed, periodic check to ensure all mounting hardware remains secure and tight.



Wiring diagram, the harness not include.